



Digital Survey Plan - SO 344562

Survey Number SO 344562
Surveyor Reference 3202780/120
Surveyor Michael John Snow
Survey Firm Beca Infrastructure Ltd
Surveyor Declaration I Michael John Snow, being a person entitled to practise as a licensed cadastral surveyor, certify that -
(a) The surveys to which this dataset relates are accurate, and were undertaken by me or under my direction in accordance with the Cadastral Survey Act 2002 and the Surveyor-General's Rules for Cadastral Survey 2002/2;
(b) This dataset is accurate, and has been created in accordance with that Act and those Rules.
Declared on 10/11/2004.

Survey Details

Dataset Description Sections 1 & 2
Purpose Legalisation
Status Approved as to Survey
Land District Wellington
Coordinate System Wellington 2000

Type Survey
Survey Class Class I Cadastral Survey

Survey Dates

Surveyed Date 27/10/2004
Submitted Date 10/11/2004 16:30:08
Registered Date

Certified Date 10/11/2004
Survey Approval Date 12/11/2004

Referenced Surveys

Survey Number	Land District	Bearing Correction
SO 342976	Wellington	0°00'00"
SO 334728	Wellington	0°00'00"
ML 1933	Wellington	-0°00'15"
DP 5317	Wellington	-0°00'15"

Territorial Authorities

Lower Hutt City

Comprised In

CT WN602/125

Created Parcels

Parcels	Parcel Intent	Area	CT Reference
Section 1 Survey Office Plan 344562	Legalisation	0.0080 ha	
Section 2 Survey Office Plan 344562	Strata	0.0031 ha	
Total Area		0.0111 ha	



Mark and Observation

Survey Number SO 344562
Coordinate System Wellington 2000

From	To	Code	Bearing	Adpt Surv	Distance	Adpt Surv
SP I SO 342976	NAIL 2 SO 342976	ob0	338°47'00"	A SO 342976	17.09	A SO 342976
SP I SO 342976	NAIL 12 SO 344562	ob1	343°07'00"	M	11.53	M
SP I SO 342976	UNMK 11 SO 344562	ob2	333°36'00"	C	19.75	C
SP I SO 342976	UNMK 10 SO 344562	ob3	331°25'00"	C	26.56	C
SP I SO 342976	UNMK 9 SO 344562	ob4	331°01'00"	C	33.39	C
SP I SO 342976	UNMK 8 SO 344562	ob5	330°53'00"	C	36.09	C
SP I SO 342976	UNMK 7 SO 344562	ob6	330°26'00"	C	38.78	C
SP I SO 342976	NAIL 6 SO 344562	ob7	329°45'00"	M	41.43	M
SP I SO 342976	NAIL 5 SO 344562	ob8	328°51'00"	M	44.05	M
SP I SO 342976	NAIL 4 SO 344562	ob9	327°47'00"	M	46.62	M
SP I SO 342976	NAIL 3 SO 344562	ob10	327°38'00"	M	46.97	M
SP I SO 342976	UNMK 2 SO 344562	ob11	326°39'00"	C	48.99	C
SP I SO 342976	UNMK 1 SO 344562	ob12	326°15'00"	C	49.78	C
SP I SO 342976	IS IX DP 44997	ob13	238°12'30"	M	204.57	M
SP I SO 342976	IS II SO 334728	ob14	58°57'40"	M	163.63	M
SP I SO 342976	LP I SO 337023	ob15	102°11'00"	M	20.18	M
NAIL 2 SO 342976	PEG ML 1933	ob16	329°54'59"	A SO 342976	32.80	A SO 342976
PEG ML 1933	UNMK 1 SO 342976	ob17	239°49'30"	A SO 342976	4.80	A SO 342976
UNMK 1 SO 342976	SP I SO 342976	ob18	147°25'00"	A SO 342976	49.73	A SO 342976
UNMK 1 SO 342976	IS 3 SO 342976	ob19	122°23'00"	A SO 342976	0.42	A SO 342976
UNMK 1 SO 342976	UNMK 1 SO 344562	ob20	239°49'30"	C	1.02	C
IS 3 SO 342976	NAIL 4 SO 342976	ob21	125°14'00"	A SO 342976	2.22	A SO 342976
NAIL 4 SO 342976	NAIL 5 SO 342976	ob22	127°29'00"	A SO 342976	0.41	A SO 342976
NAIL 5 SO 342976	NAIL 6 SO 342976	ob23	130°13'00"	A SO 342976	2.77	A SO 342976
NAIL 6 SO 342976	UNMK 7 SO 342976	ob24	134°59'00"	A SO 342976	2.77	A SO 342976
UNMK 7 SO 342976	UNMK 8 SO 342976	ob25	139°44'00"	A SO 342976	2.77	A SO 342976
UNMK 8 SO 342976	UNMK 9 SO 342976	ob26	144°30'00"	A SO 342976	2.77	A SO 342976
UNMK 9 SO 342976	UNMK 10 SO 342976	ob27	149°16'00"	A SO 342976	2.77	A SO 342976
UNMK 10 SO 342976	UNMK 11 SO 342976	ob28	149°28'00"	A SO 342976	6.80	A SO 342976
UNMK 11 SO 342976	NAIL 12 SO 342976	ob29	145°07'00"	A SO 342976	6.80	A SO 342976
NAIL 12 SO 342976	NAIL 2 SO 342976	ob30	140°46'00"	A SO 342976	2.96	A SO 342976
UNMK 1 SO 344562	UNMK 2 SO 344562	ob31	122°23'00"	C	0.86	C
UNMK 1 SO 344562	PEG ML 1933	ob32	239°49'30"	C	19.25	C
UNMK 2 SO 344562	NAIL 3 SO 344562	ob33	125°14'00"	C	2.18	C
NAIL 3 SO 344562	NAIL 4 SO 344562	ob34	127°29'00"	C	0.37	C
NAIL 4 SO 344562	NAIL 5 SO 344562	ob35	130°13'00"	C	2.71	C
NAIL 5 SO 344562	NAIL 6 SO 344562	ob36	134°59'00"	C	2.70	C
NAIL 6 SO 344562	UNMK 7 SO 344562	ob37	139°44'00"	C	2.70	C
UNMK 7 SO 344562	UNMK 8 SO 344562	ob38	144°30'00"	C	2.70	C
UNMK 8 SO 344562	UNMK 9 SO 344562	ob39	149°16'00"	C	2.70	C
UNMK 9 SO 344562	UNMK 10 SO 344562	ob40	149°28'00"	C	6.83	C
UNMK 10 SO 344562	UNMK 11 SO 344562	ob41	145°07'00"	C	6.87	C
UNMK 11 SO 344562	NAIL 12 SO 344562	ob42	140°46'00"	C	8.59	C



Mark and Observation

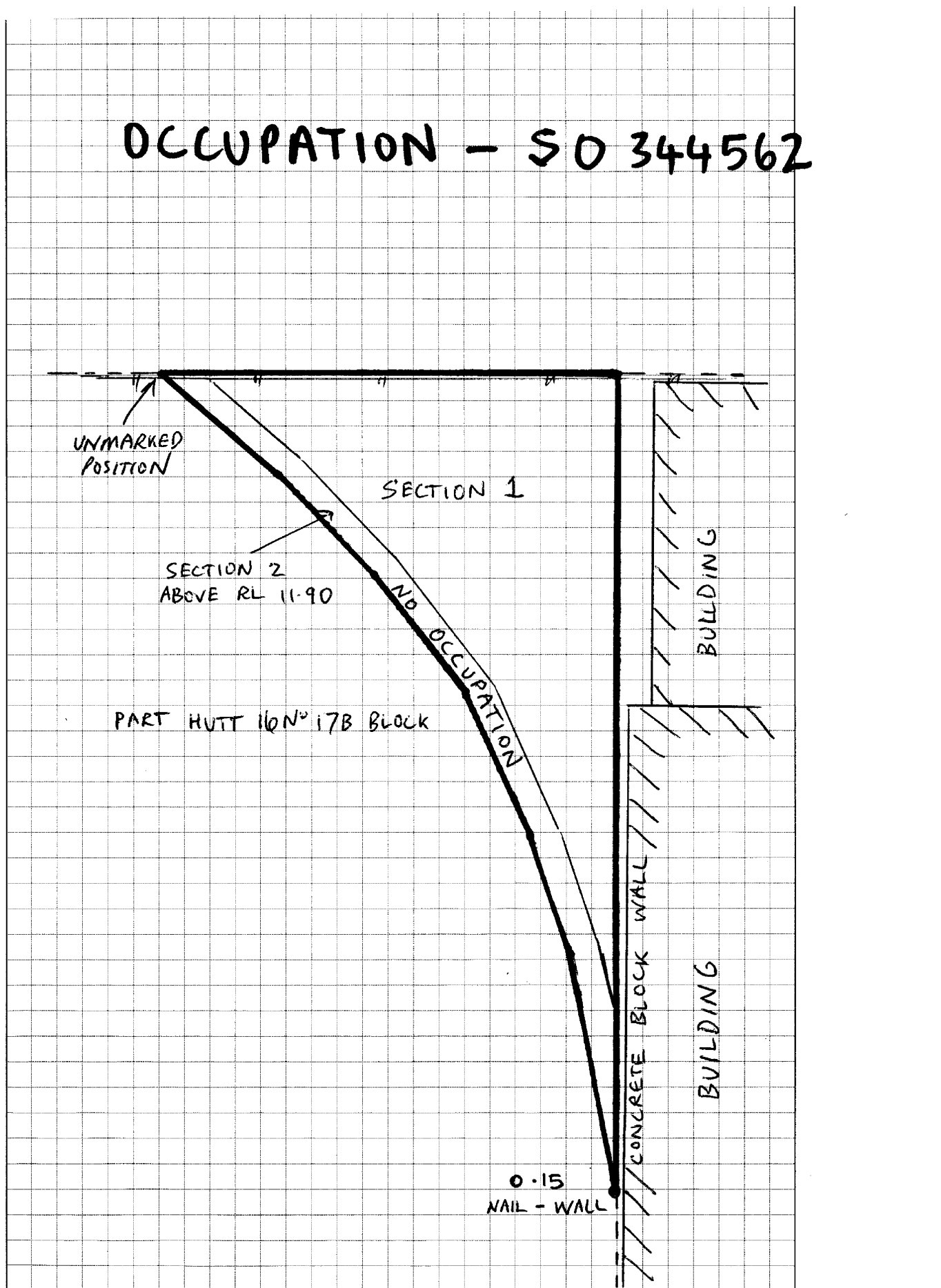
Survey Number SO 344562
Coordinate System Wellington 2000

From	To	Code	Bearing	Adpt Surv	Distance	Adpt Surv
NAIL 12 SO 344562	NAIL 2 SO 342976	ob43	329°54'59"	A SO 342976	5.66	A SO 342976
NAIL 12 SO 344562	PEG ML 1933	ob44	149°54'59"	C	7.20	C

Mark Name	Description
IS 3 SO 342976	Flush in seal against conc. post 0.27 to CI fence
LP I SO 337023	Flush in footpath
LP I SO 337023	Lead plug in concrete footpath
LP I SO 337023	fl.
NAIL 12 SO 342976	Flush in seal 0.61 to building
NAIL 12 SO 344562	Flush in seal.
NAIL 2 SO 342976	Flush in seal 0.15 to building
NAIL 3 SO 344562	Flush in conc.
NAIL 4 SO 342976	Flush in seal
NAIL 4 SO 344562	Flush in conc.
NAIL 5 SO 342976	Flush in seal
NAIL 5 SO 344562	Flush in conc.
NAIL 6 SO 342976	Flush in seal
NAIL 6 SO 344562	Flush in conc.
SP I SO 342976	Flush in seal
UNMK 1 SO 342976	Over CI fence into Railway Land
UNMK 1 SO 344562	Difficult to move obstruction.
UNMK 10 SO 342976	Difficult to move obstruction
UNMK 10 SO 344562	Difficult to move obstruction.
UNMK 11 SO 342976	Difficult to move obstruction
UNMK 11 SO 344562	Difficult to move obstruction.
UNMK 2 SO 344562	Difficult to move obstruction.
UNMK 7 SO 342976	Difficult to move obstruction
UNMK 7 SO 344562	Difficult to move obstruction.
UNMK 8 SO 342976	Difficult to move obstruction
UNMK 8 SO 344562	Difficult to move obstruction.
UNMK 9 SO 342976	Difficult to move obstruction
UNMK 9 SO 344562	Difficult to move obstruction.

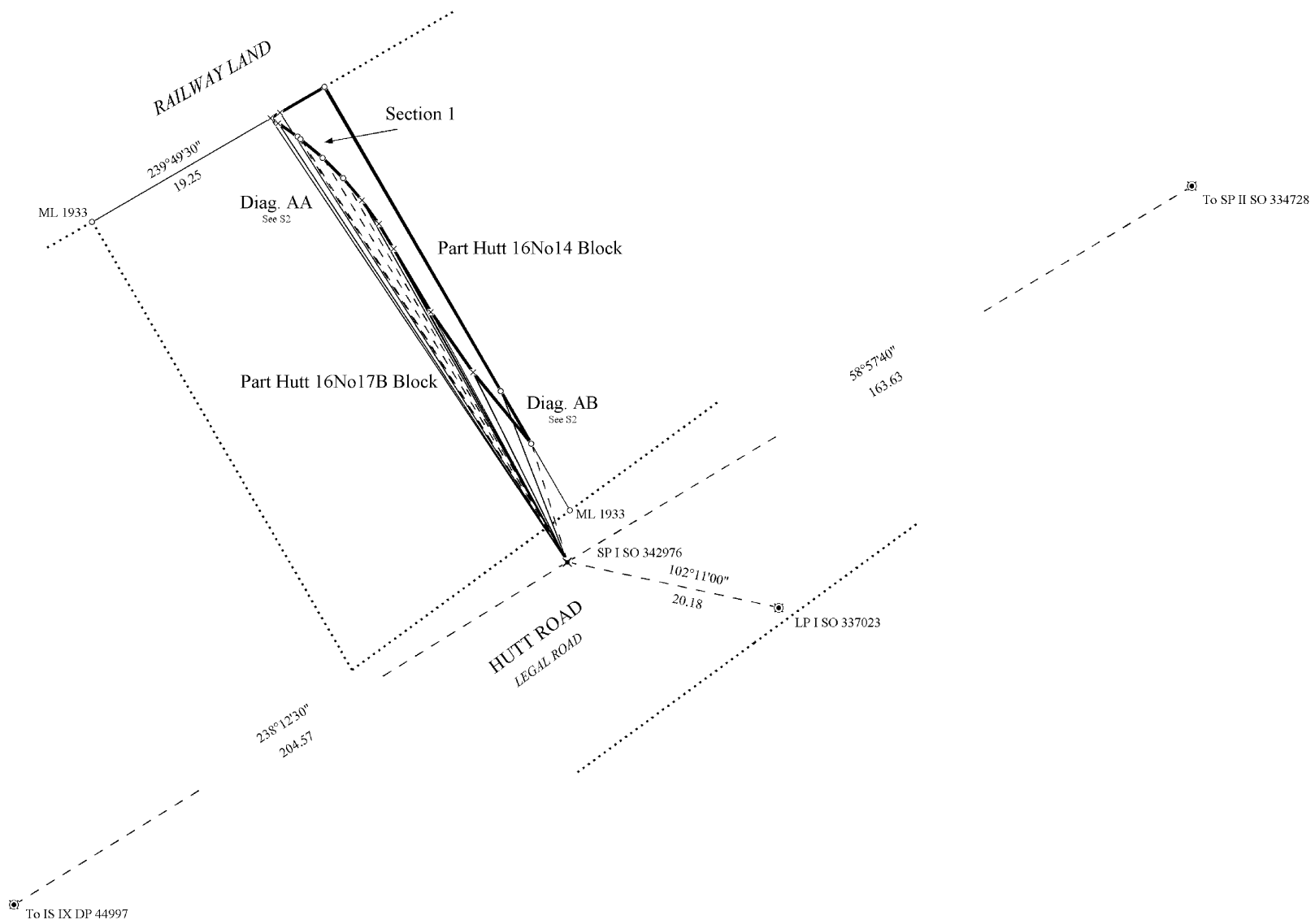
*** End of Report ***

OCCUPATION - SO 344562



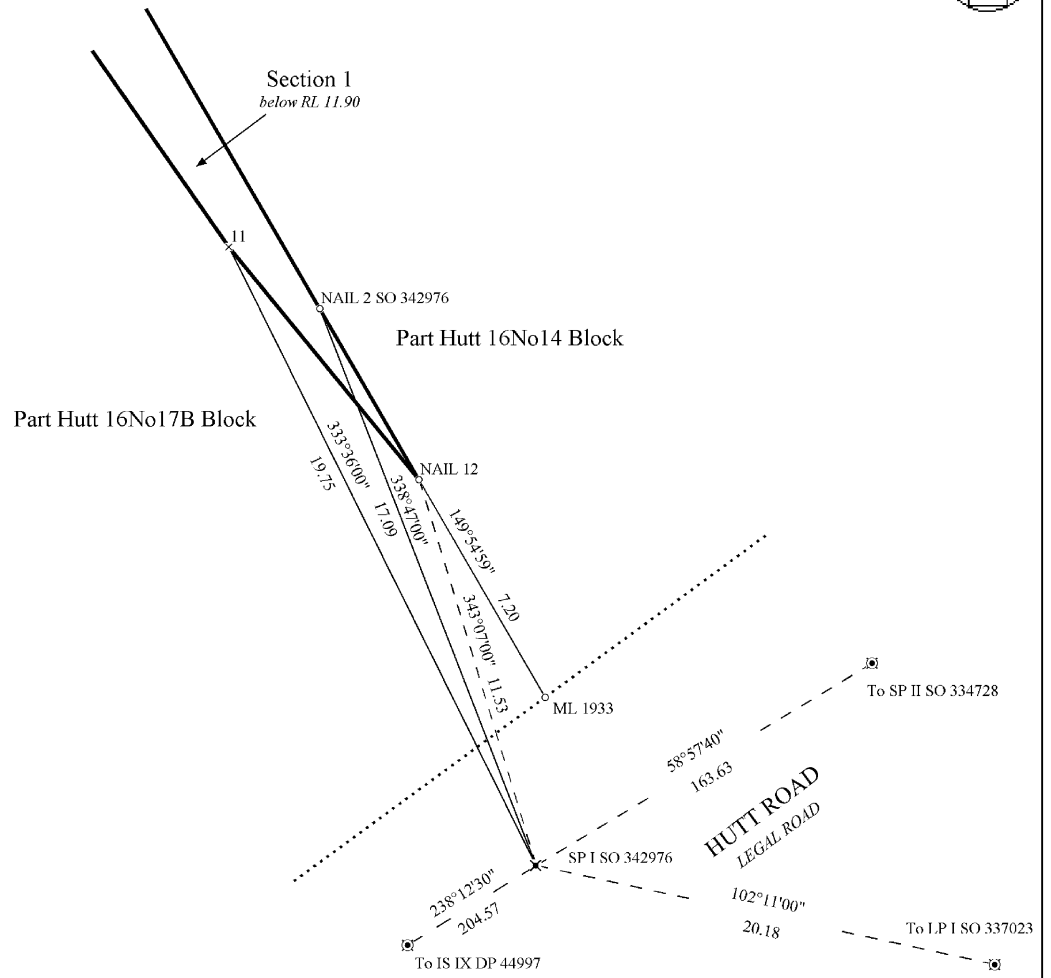
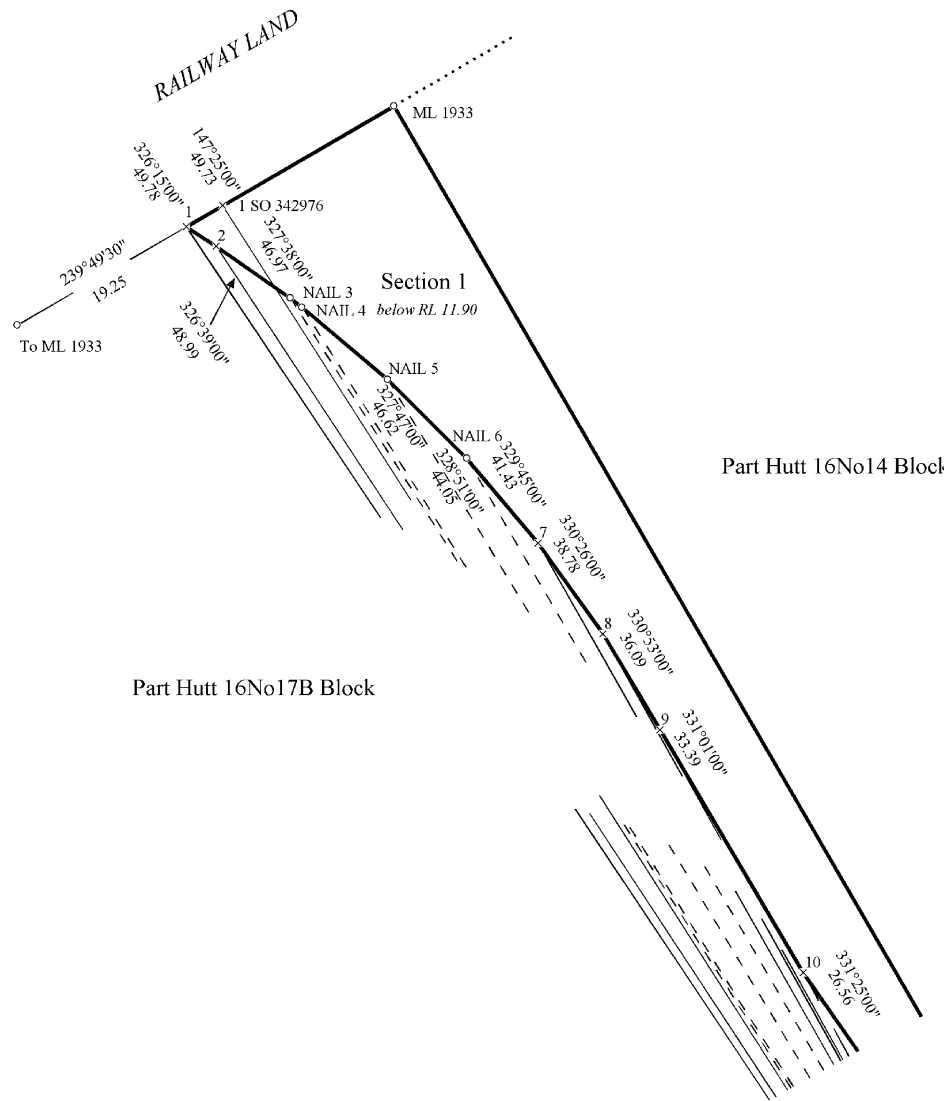


Diag. A



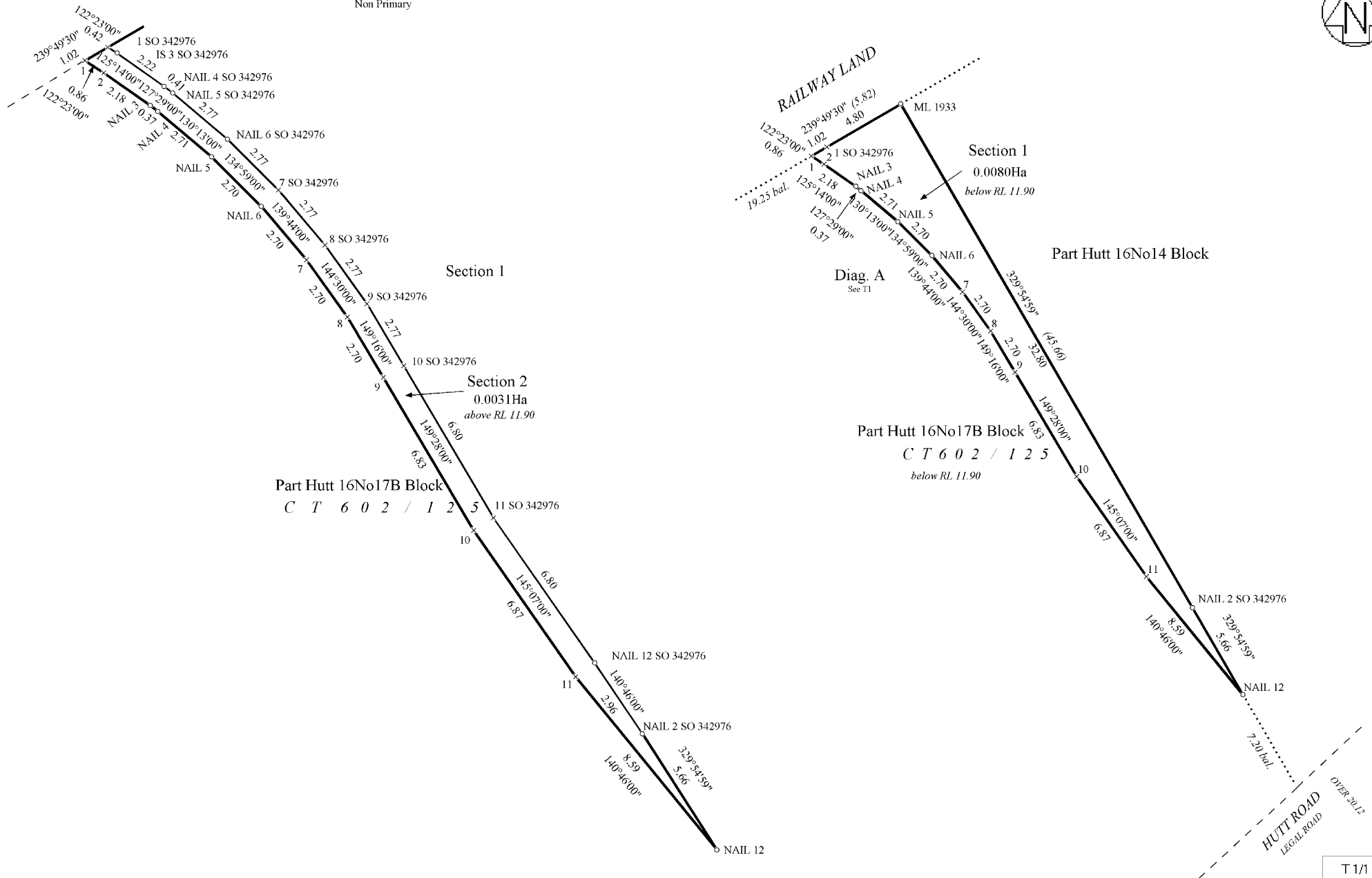


Diag. AA





Diag. A
Non Primary



Land District: Wellington

Sections 1 & 2

Surveyor: Michael John Snow
Firm: Beca Infrastructure Ltd
Survey Date: 27/10/2004

Digital Survey Plan
SO 344562
Approved on: 12/11/2004

Digitally Generated Plan
Generated on: 12/11/2004 08:47am Page 7 of 7

T 1/1