



# Digital Survey Plan - SO 353302

---

**Survey Number** SO 353302  
**Surveyor Reference** 1356-Steve Richards Redef  
**Surveyor** Anthony Paul Nikkel  
**Survey Firm** Nikkel Surveying Ltd  
**Surveyor Declaration** I Anthony Paul Nikkel, being a person entitled to practise as a licensed cadastral surveyor, certify that -  
(a) The surveys to which this dataset relates are accurate, and were undertaken by me or under my direction in accordance with the Cadastral Survey Act 2002 and the Surveyor-General's Rules for Cadastral Survey 2002/2;  
(b) This dataset is accurate, and has been created in accordance with that Act and those Rules.  
Declared on 03/06/2005.

---

## Survey Details

**Dataset Description** Redefinition of the NW and SW Boundaries of Lot 119 DP 426  
**Purpose** Re-definition  
**Status** Approved as to Survey  
**Land District** Nelson  
**Coordinate System** Nelson 2000  
**Type** Survey  
**Survey Class** Class II Cadastral Survey

---

## Survey Dates

**Surveyed Date** 20/05/2005  
**Submitted Date** 03/06/2005 12:52:25  
**Deposit Date**  
**Certified Date** 03/06/2005  
**Survey Approval Date** 09/06/2005

---

## Referenced Surveys

Survey Number	Land District	Bearing Correction
DP 426	Nelson	0°00'00"
DP 11992	Nelson	0°00'00"
DP 302891	Nelson	0°00'00"
DP 307275	Nelson	0°00'00"

---

## Territorial Authorities

Tasman District

---

## Comprised In

CT NL45/149



# Mark and Observation

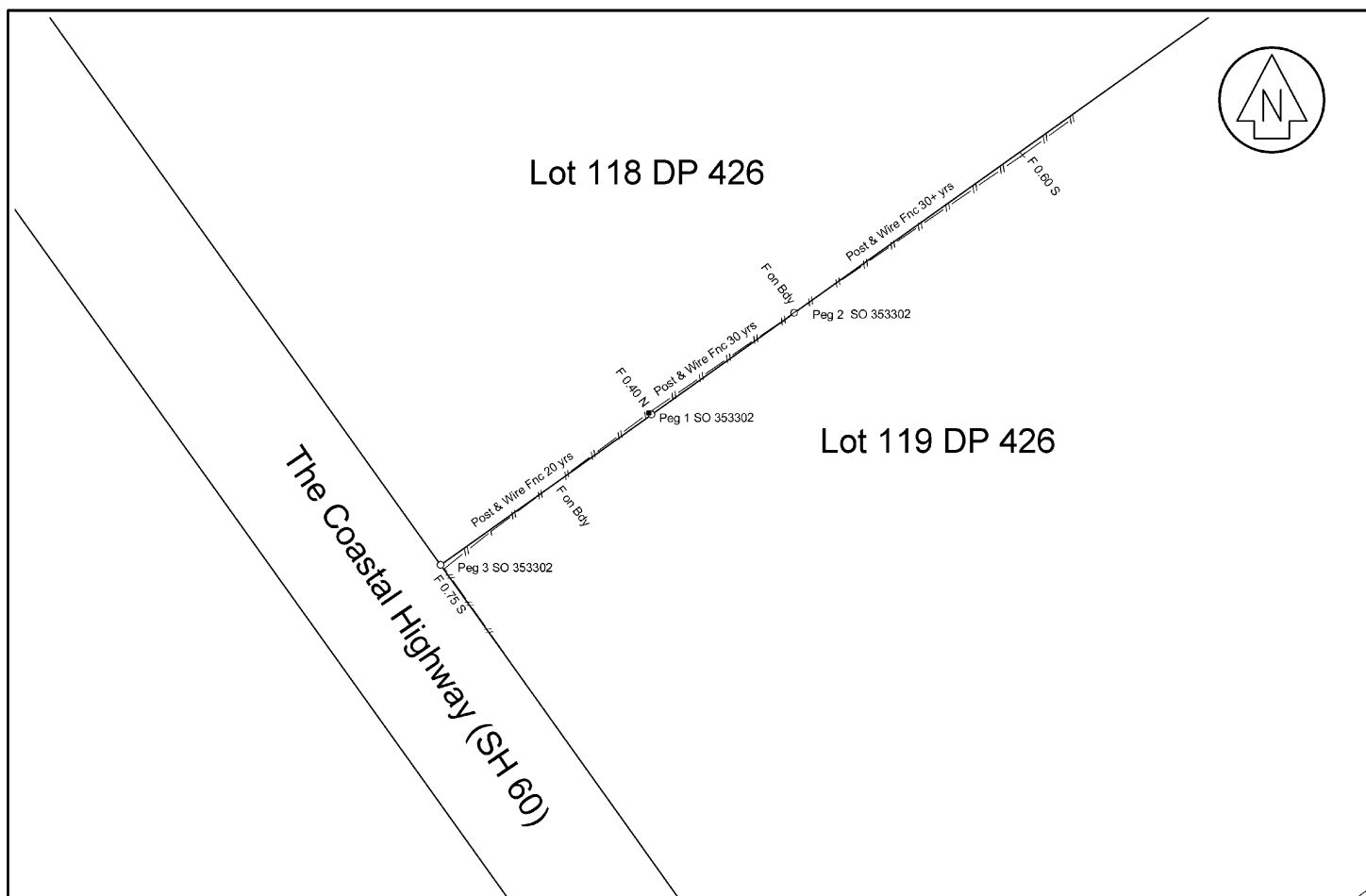
**Survey Number** SO 353302  
**Coordinate System** Nelson 2000


From	To	Code	Bearing	Adpt Surv	Distance	Adpt Surv
IS I DP 19518	IS IV DP 11992	ob0	325°05'25"	A DP 307275	263.51	A DP 307275
IS I DP 19518	IR I DP 307275	ob1	40°02'20"	A DP 307275	75.16	A DP 307275
IR I DP 307275	IR II DP 307275	ob9	55°46'50"	A DP 307275	191.80	A DP 307275
IS IV DP 11992	IT I DP 302891	ob4	83°33'40"	A DP 302891	249.54	A DP 302891
IT I DP 302891	IT IV DP 302891	ob7	31°32'30"	A DP 307275	132.70	A DP 307275
IT IV DP 302891	IT V DP 307275	ob3	153°42'30"	A DP 307275	125.62	A DP 307275
IT V DP 307275	IR II DP 307275	ob13	190°55'20"	A DP 307275	80.61	A DP 307275
IS I DP 19518	PEG DP 307275	ob2	359°25'00"	A DP 307275	27.62	A DP 307275
IS IV DP 11992	PEG DP 11992	ob5	77°34'00"	A DP 11992	14.17	A DP 11992
PEG DP 11992	PEG 3 SO 353302	ob12	144°29'00"	A DP 426	120.70	A DP 426
PEG 3 SO 353302	PEG DP 307275	ob10	144°29'00"	A DP 426	114.67	A DP 426
PEG 3 SO 353302	PEG 1 SO 353302	ob11	54°30'00"	A DP 426	37.00	C
PEG 1 SO 353302	PEG 2 SO 353302	ob14	54°30'00"	A DP 426	25.00	C
IS IV DP 11992	IT 5 SO 353302	ob6	138°11'05"	M	137.97	M
IT 5 SO 353302	IS I DP 19518	ob16	152°33'25"	M	127.63	M
IT 5 SO 353302	IR I DP 307275	ob17	117°28'25"	M	120.78	M
IT 5 SO 353302	PEG 1 SO 353302	ob18	37°09'10"	M	36.56	M
IT 5 SO 353302	PEG 2 SO 353302	ob19	44°11'20"	M	60.88	M
IT 5 SO 353302	PEG 3 SO 353302	ob20	313°35'00"	M	11.13	M
IT 5 SO 353302	PEG DP 307275	ob21	145°38'50"	M	103.74	M
IT I DP 302891	PEG DP 426	ob8	188°07'00"	A DP 307275	6.93	A DP 307275
PEG 2 SO 353302	PEG DP 426	ob15	54°30'00"	A DP 426	138.22	C

Mark Name	Description
PEG 3 SO 353302	Peg 3 position in position DP 426

\*\*\* End of Report \*\*\*

# Occupation Diagram



Nikkel Surveying Ltd PO Box 423 Motueka Ph 03 528 4455		Occupation Diagram for SO 353302		Date: May 2005	Scale: 1: 500 (A3)	Sheet: 1 of 1
				Ref: 1356-RIC	Checked:	Series:

