



# Digital Survey Plan - SO 361910

---

**Survey Number** SO 361910  
**Surveyor Reference** 9388  
**Surveyor** Paul Timothy Cook  
**Survey Firm** Clark Fortune McDonald & Associates (Queenstown)  
**Surveyor Declaration** I Paul Timothy Cook, being a person entitled to practise as a licensed cadastral surveyor, certify that -  
(a) The surveys to which this dataset relates are accurate, and were undertaken by me or under my direction in accordance with the Cadastral Survey Act 2002 and the Surveyor-General's Rules for Cadastral Survey 2002/2;  
(b) This dataset is accurate, and has been created in accordance with that Act and those Rules.  
Declared on 15/12/2005.

---

## Survey Details

**Dataset Description** Mining Permit 41 906 over Lot 2 DP 341711  
**Purpose** Mining  
**Status** Approved for Mining Purposes Or **Type** Survey  
**Land District** Otago **Survey Class** Class III Cadastral Survey  
**Coordinate System** Lindis Peak 2000

---

## Survey Dates

**Surveyed Date** 10/11/2005 **Certified Date** 15/12/2005  
**Submitted Date** 15/12/2005 16:15:28 **Survey Approval Date** 21/12/2005  
**Deposit Date**

---

## Referenced Surveys

Survey Number	Land District	Bearing Correction
DP 344432	Otago	0°00'00"
DP 21223	Otago	0°00'00"
DP 19397	Otago	0°00'00"
DP 324262	Otago	0°00'00"
DP 304819	Otago	0°00'00"
DP 24552	Otago	0°00'00"

---

## Territorial Authorities

Queenstown-Lakes District

---

## Comprised In

CT 171612

---

## Created Parcels

Parcels	Parcel Intent	Area	CT Reference
Shown A Survey Office Plan 361910	Licence/Permit	4.7882 ha	
<b>Total Area</b>		<u>4.7882 ha</u>	

---



# Mark and Observation

**Survey Number** SO 361910  
**Coordinate System** Lindis Peak 2000

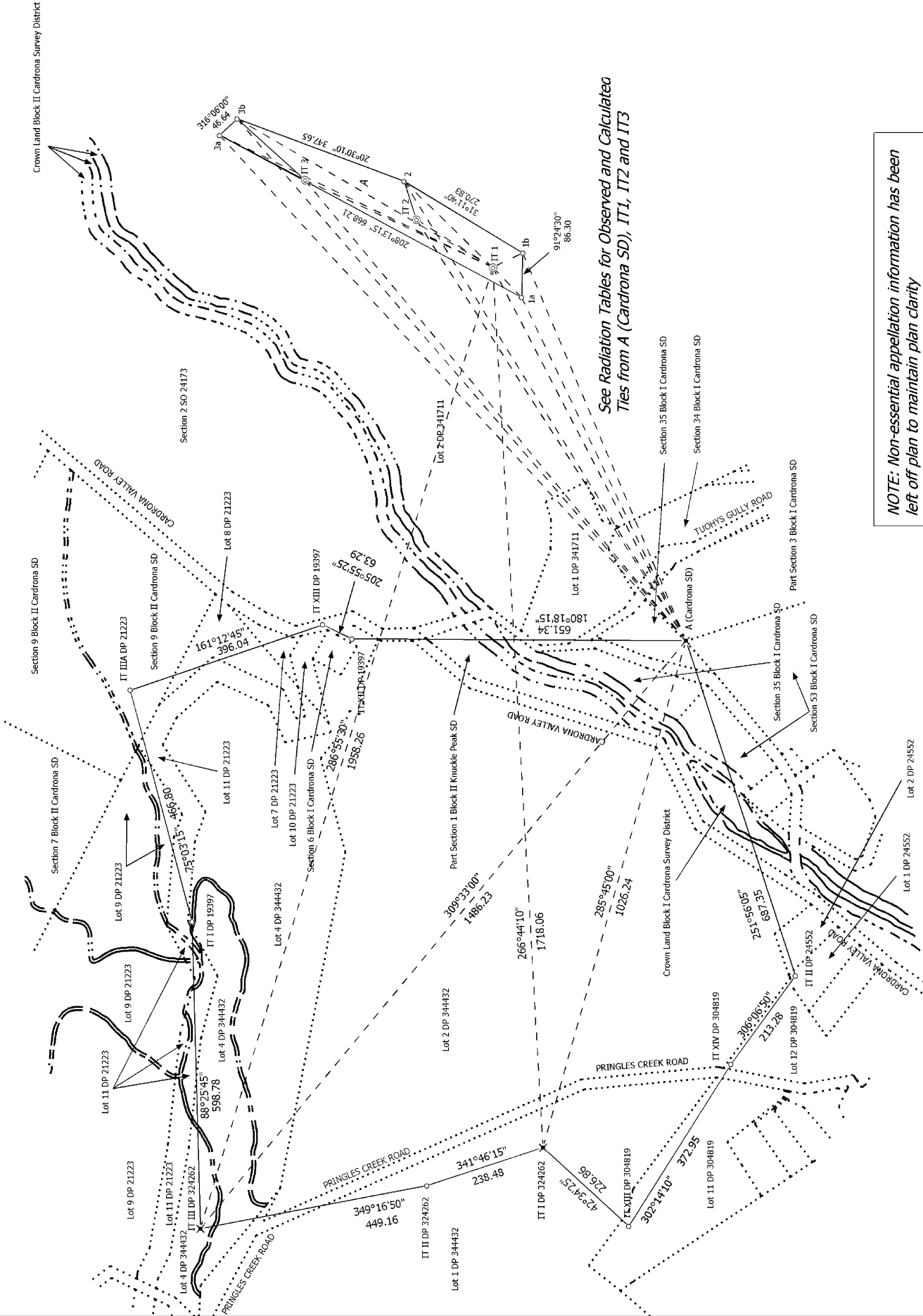
From	To	Code	Bearing	Adpt Surv	Distance	Adpt Surv
A (Cardrona SD)	IT II DP 24552	ob0	251°56'05"	A DP 344432	687.35	A DP 344432
IT II DP 24552	IT XIV DP 304819	ob11	306°06'50"	A DP 344432	213.28	A DP 344432
IT XIV DP 304819	IT XIII DP 304819	ob12	302°14'10"	A DP 344432	372.95	A DP 344432
IT XIII DP 304819	IT I DP 324262	ob16	42°34'25"	A DP 344432	226.86	A DP 344432
IT I DP 324262	IT II DP 324262	ob15	341°46'15"	A DP 344432	238.48	A DP 344432
IT II DP 324262	IT III DP 324262	ob13	349°16'50"	A DP 344432	449.16	A DP 344432
IT III DP 324262	IT I DP 19397	ob14	88°25'45"	A DP 344432	598.78	A DP 344432
IT I DP 19397	IT IIIA DP 21223	ob17	75°03'15"	A DP 344432	466.80	A DP 344432
IT IIIA DP 21223	IT XIII DP 19397	ob18	161°12'45"	A DP 344432	396.04	A DP 344432
IT XIII DP 19397	IT XII DP 19397	ob20	205°55'25"	A DP 344432	63.29	A DP 344432
IT XII DP 19397	A (Cardrona SD)	ob19	180°18'15"	A DP 344432	651.34	A DP 344432
A (Cardrona SD)	IT III DP 324262	ob1	309°33'00"	M	1,486.23	M
A (Cardrona SD)	IT 1 SO 361910	ob2	62°38'40"	M	819.08	M
IT 1 SO 361910	IT I DP 324262	ob21	266°44'10"	M	1,718.06	M
A (Cardrona SD)	IT 2 SO 361910	ob3	57°22'10"	M	974.67	M
IT 2 SO 361910	IT 1 SO 361910	ob23	212°02'10"	M	175.99	M
A (Cardrona SD)	IT 3 SO 361910	ob4	50°24'20"	M	1,165.19	M
IT 3 SO 361910	IT 1 SO 361910	ob25	204°56'40"	M	403.96	M
A (Cardrona SD)	PEG 1a SO 361910	ob5	64°26'20"	M	741.86	M
PEG 1a SO 361910	IT 1 SO 361910	ob28	45°59'00"	M	80.98	M
A (Cardrona SD)	PEG 1b SO 361910	ob6	67°10'30"	M	819.71	M
PEG 1b SO 361910	IT 1 SO 361910	ob32	334°21'00"	M	64.78	M
A (Cardrona SD)	PEG 2 SO 361910	ob7	58°28'00"	M	1,050.99	M
PEG 2 SO 361910	IT 1 SO 361910	ob30	224°10'10"	M	241.57	M
A (Cardrona SD)	PEG 3a SO 361910	ob8	47°18'30"	M	1,340.43	M
PEG 3a SO 361910	IT 1 SO 361910	ob34	205°49'40"	M	591.60	M
A (Cardrona SD)	PEG 3b SO 361910	ob9	49°18'00"	M	1,342.22	M
PEG 3b SO 361910	IT 1 SO 361910	ob36	210°10'30"	M	577.11	M
IT 2 SO 361910	PEG 2 SO 361910	ob24	72°11'30"	C	78.75	C
IT 3 SO 361910	PEG 3a SO 361910	ob26	27°43'50"	C	187.80	C
IT 3 SO 361910	PEG 3b SO 361910	ob27	42°04'00"	C	178.67	C
PEG 1a SO 361910	PEG 1b SO 361910	ob29	91°24'30"	C	86.30	C
PEG 1b SO 361910	PEG 2 SO 361910	ob33	31°11'40"	C	270.83	C
PEG 2 SO 361910	PEG 3b SO 361910	ob31	20°30'10"	C	347.65	C
PEG 3b SO 361910	PEG 3a SO 361910	ob37	316°06'00"	C	46.64	C
PEG 3a SO 361910	PEG 1a SO 361910	ob35	208°13'15"	C	668.21	C
A (Cardrona SD)	IT I DP 324262	ob10	285°45'00"	M	1,026.24	M
IT 1 SO 361910	IT III DP 324262	ob22	286°55'30"	M	1,958.26	M

Mark Name	Description
A (Cardrona SD)	Bayonet 0.85m above ground level.

<b><u>SHOWN</u></b>	<b><u>DESCRIPTION</u></b>	<b><u>TITLE REFERENCE</u></b>	<b><u>AREA</u></b>
A	Lot 2 DP341711	CT 171612	4.7882ha



Crown Land Block II Cardrona Survey District



See Radiation Tables for Observed and Calculated Ties from A (Cardrona SD), IT1, IT2 and IT3

**NOTE: Non-essential appellation information has been left off plan to maintain plan clarity**

S 1/1

Land District: Otago

Digitally Generated Plan  
Generated on: 21/12/2005 11:38am Page 4 of 5

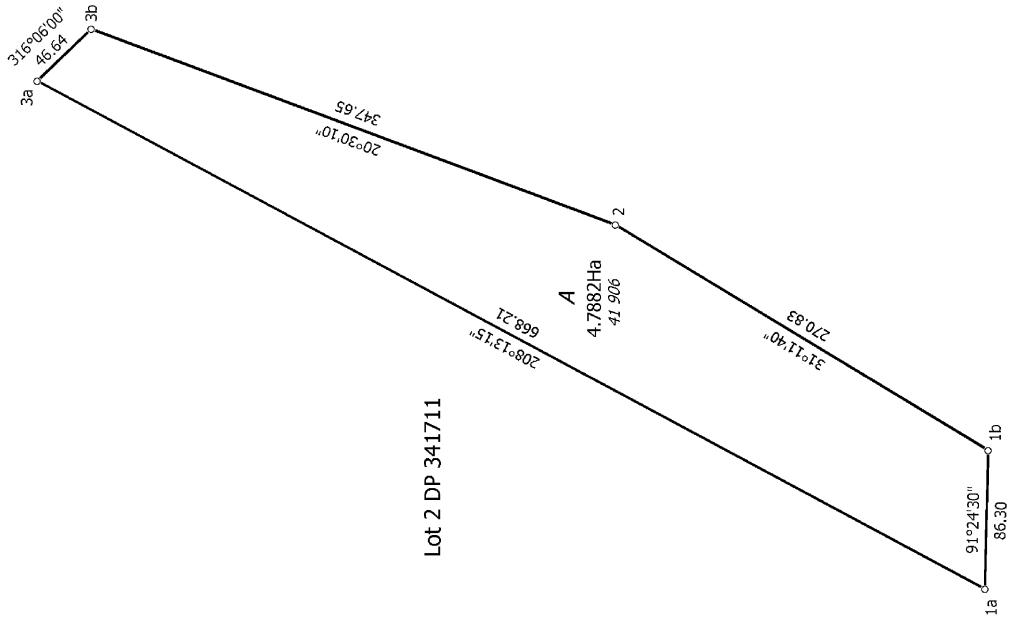
Mining Permit 41 906 over Lot 2 DP 341711

Surveyor: Paul Timothy Cook  
Firm: Clark Fortune McDonald & Associate  
Survey Date: 10/11/2005

Digital Survey Plan  
SO 361910  
Approved on: 21/12/2005  
Deposited on: 21/12/2005



Non Primary



T 1/1

Land District: Otago

Digitally Generated Plan  
Generated on: 21/12/2005 11:38am Page 5 of 5

Mining Permit 41 906 over Lot 2 DP 341711

Surveyor: Paul Timothy Cook  
Firm: Clark Fortune McDonald & Associate  
Survey Date: 10/11/2005

Digital Survey Plan  
SO 361910  
Approved on: 21/12/2005  
Deposited on: 21/12/2005