



Digital Survey Plan - SO 414920

Survey Number SO 414920
Surveyor Reference L3153
Surveyor Simon John Reid
Survey Firm CKL Surveying and Planning
Surveyor Declaration I Simon John Reid, being a person entitled to practise as a licensed cadastral surveyor, certify that -
(a) The surveys to which this dataset relates are accurate, and were undertaken by me or under my direction in accordance with the Cadastral Survey Act 2002 and the Surveyor-General's Rules for Cadastral Survey 2002/2;
(b) This dataset is accurate, and has been created in accordance with that Act and those Rules.
Declared on 09/12/2008.

Survey Details

Dataset Description Marginal Strip - Section 1 SO 401809
Purpose Statutory Easement/Right
Status Approved as to Survey
Land District North Auckland
Coordinate System Mount Eden 2000
Type Computed
Survey Class Class I Cadastral Survey

Survey Dates

Surveyed Date 28/11/2008
Submitted Date 09/12/2008 11:18:53
Deposit Date
Certified Date 09/12/2008
Survey Approval Date 11/12/2008

Referenced Surveys

Survey Number	Land District	Bearing Correction
SO 401809	North Auckland	0°00'00"

Territorial Authorities

Auckland City

Comprised In

CT 455025

Created Parcels

Parcels	Parcel Intent	Area	CT Reference
Marginal Strip Survey Office Plan 414920	Marginal Strip		
Total Area		0.0000 Ha	

Mark and Observation

Survey Number SO 414920
Coordinate System Mount Eden 2000

From	To	Code	Bearing	Adpt Surv	Distance	Adpt Surv
DISK 5 SO 401809	UNMK 15 SO 414920	ob0	153°32'00"	A SO 401809	8.85	C
UNMK 15 SO 414920	DISK 6 SO 401809	ob7	153°32'00"	A SO 401809	2.39	C
DISK 6 SO 401809	DISK 7 SO 401809	ob1	173°19'00"	A SO 401809	10.32	A SO 401809
DISK 7 SO 401809	PEG (908) SO 38537	ob2	200°46'00"	A SO 401809	7.74	A SO 401809
PEG (908) SO 38537	UNMK (275) DP 42368	ob3	200°46'00"	A SO 401809	1.01	A SO 401809
UNMK (277) DP 42368	PEG (75) DP 42368	ob4	346°10'00"	A SO 401809	9.05	A SO 401809
PEG (75) DP 42368	UNMK 16 SO 414920	ob5	346°10'00"	A SO 401809	10.95	C
UNMK 16 SO 414920	PEG (74) DP 42368	ob8	346°10'00"	A SO 401809	0.74	C
PEG 297 SO 401809	PEG (287) DP 42368	ob9	166°10'00"	A SO 401809	53.11	A SO 401809
PEG (291) DP 42368	PEG (300) DP 42368	ob11	346°10'00"	A SO 401809	53.11	A SO 401809
PEG (300) DP 42368	PEG 297 SO 401809	ob12	76°10'00"	A SO 401809	3.05	A SO 401809
PEG (74) DP 42368	PEG (291) DP 42368	ob6	346°10'00"	A SO 401809	63.03	A SO 401809
DISK 3 SO 401809	DISK 4 SO 401809	ob13	167°04'00"	A SO 401809	30.07	A SO 401809
DISK 4 SO 401809	DISK 5 SO 401809	ob14	160°21'00"	A SO 401809	21.96	A SO 401809
PEG (287) DP 42368	DISK 3 SO 401809	ob10	76°10'00"	A SO 401809	13.39	A SO 401809

*** End of Report ***



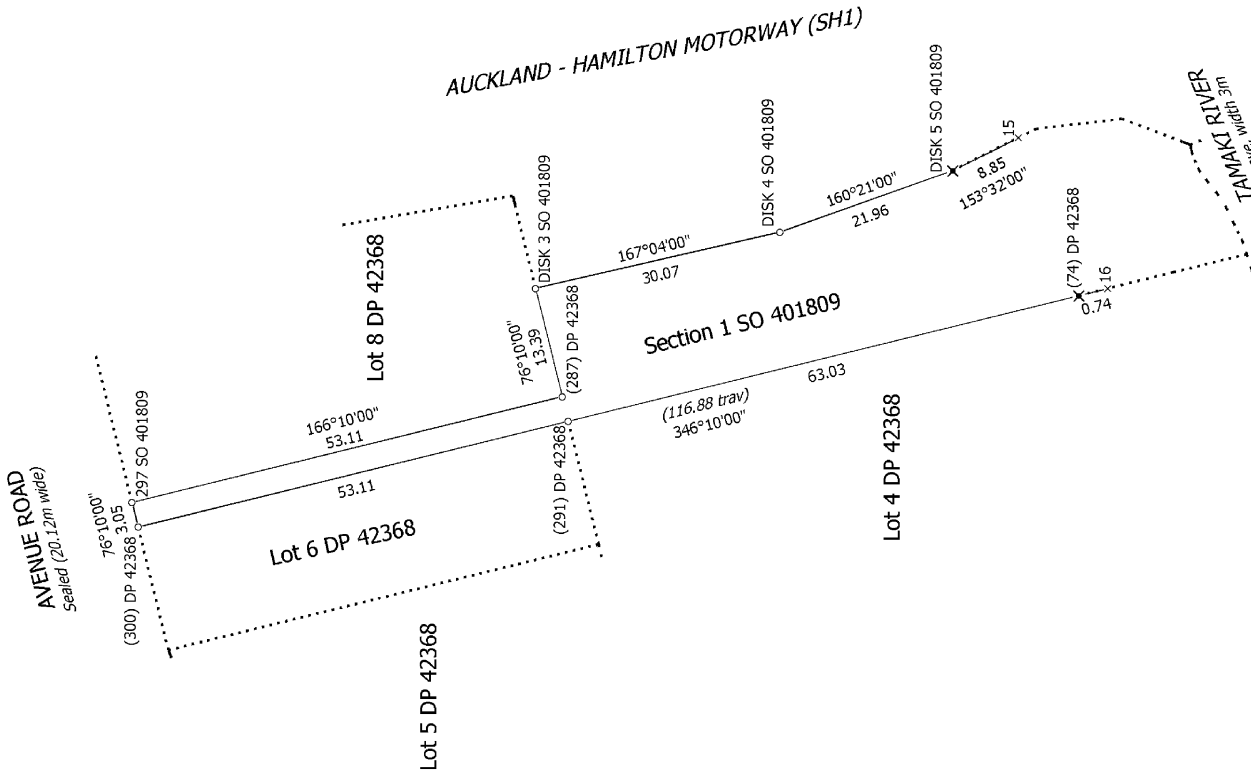
S 1/1

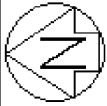
Digital Survey Plan
SO 414920
Approved on: 11/12/2008
Deposited on: 11/12/2008

Surveyor: Simon John Reid
Firm: CKL Surveying and Planning
Survey Date: 28/11/2008

Marginal Strip - Section 1 SO 401809

Land District: North Auckland
Dataset Type: Computed
Digitally Generated Plan
Generated on: 11/12/2008 09:17 am Page 3 of 4





Non Primary

Section 1 SO 401809

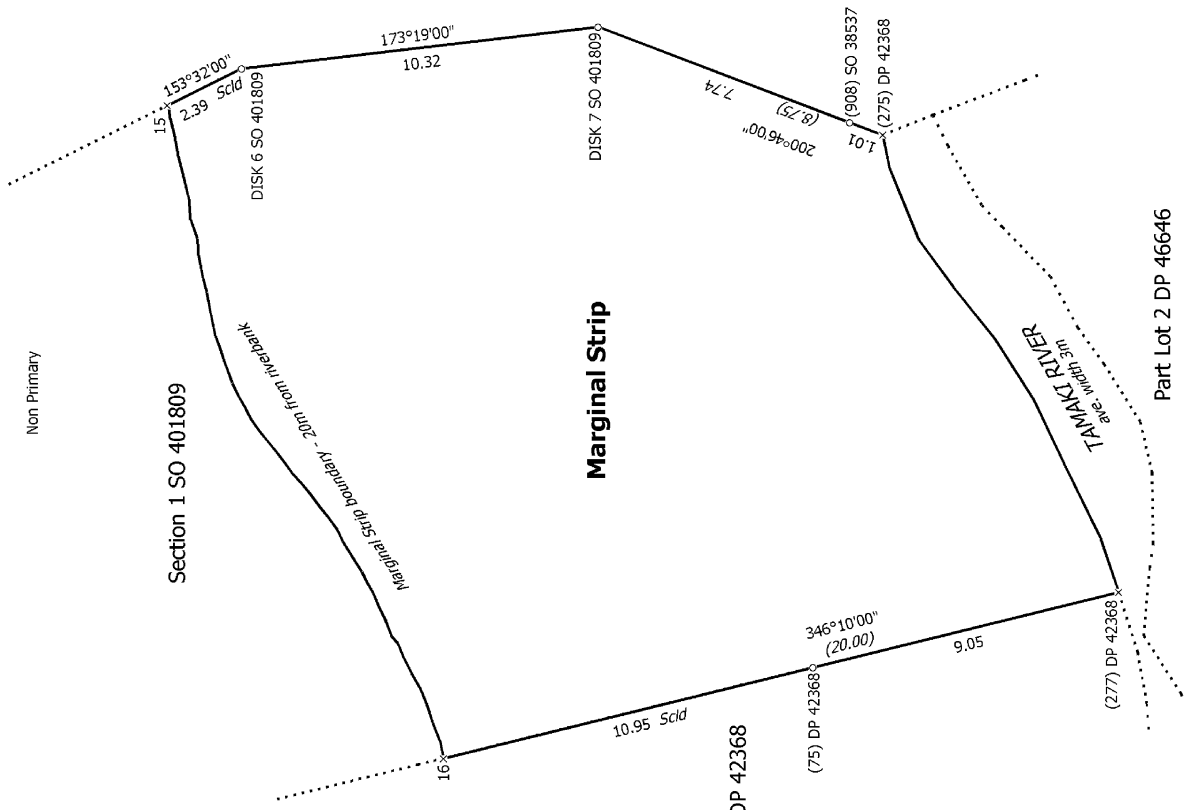
Marginal Strip boundary - 20m from riverbank

Marginal Strip

AUCKLAND - HAMILTON MOTORWAY (SH1)

Lot 4 DP 42368

Part Lot 2 DP 46646



T 1/1

Land District: North Auckland
Dataset Type: Computed
 Digitally Generated Plan
 Generated on: 11/12/2008 09:17 am Page 4 of 4

Marginal Strip - Section 1 SO 401809

Surveyor: Simon John Reid
 Firm: CKL Surveying and Planning
 Survey Date: 28/11/2008

Digital Survey Plan
SO 414920
 Approved on: 11/12/2008
 Deposited on: 11/12/2008