



Digital Survey Plan - ML 357249

Survey Number	ML 357249
Surveyor Reference	msnow001
Surveyor	Michael John Snow
Survey Firm	Beca Infrastructure Ltd
Surveyor Declaration	I Michael John Snow, being a person entitled to practise as a licensed cadastral surveyor, certify that - (a) The surveys to which this dataset relates are accurate, and were undertaken by me or under my direction in accordance with the Cadastral Survey Act 2002 and the Surveyor-General's Rules for Cadastral Survey 2002/2; (b) This dataset is accurate, and has been created in accordance with that Act and those Rules. Declared on 17/08/2005.

Survey Details

Dataset Description	Kauangaroa 3E1 & 3G1A1B, 3E1 & 3G1A2, 3E1 & 3G1A3, 3E1 & 3G1A4		
Purpose	Partition		
Status	Approved as to Survey	Type	Computed
Land District	Wellington	Survey Class	Class II Cadastral Survey
Coordinate System	Wanganui OCD		

Survey Dates

Surveyed Date	09/08/2005	Certified Date	17/08/2005
Submitted Date	17/08/2005 17:04:49	Survey Approval Date	30/08/2005
Deposit Date			

Referenced Surveys

Survey Number	Land District	Bearing Correction
ML 4009	Wellington	0°00'00"
ML 4366	Wellington	0°00'00"
ML 4242	Wellington	0°00'00"
ML 5096	Wellington	0°00'00"

Territorial Authorities

Rangitikei District

Comprised In

CT WNPR10/39
CT WNMB92/229
CT WNMB101/336

Created Parcels

Parcels	Parcel Intent	Area	CT Reference
Kauangaroa Block 3E1 & 3G1A4	Maori	0.5063 ha	
Roadway A Maori Land Plan 357249	Easement		
Kauangaroa Block 3E1 & 3G1A2	Maori	2.7316 ha	
Kauangaroa Block 3E1 & 3G1A1B	Maori	1.5108 ha	
Kauangaroa Block 3E1 & 3G1A3	Maori	2.0234 ha	



Digital Survey Plan - ML 357249

Created Parcels

Parcels	Parcel Intent	Area	CT Reference
Roadway B Maori Land Plan 357249	Easement		
Roadway C Maori Land Plan 357249	Easement		
Total Area		<hr/> 6.7721 ha	



Mark and Observation

Survey Number ML 357249
Coordinate System Wanganui OCD

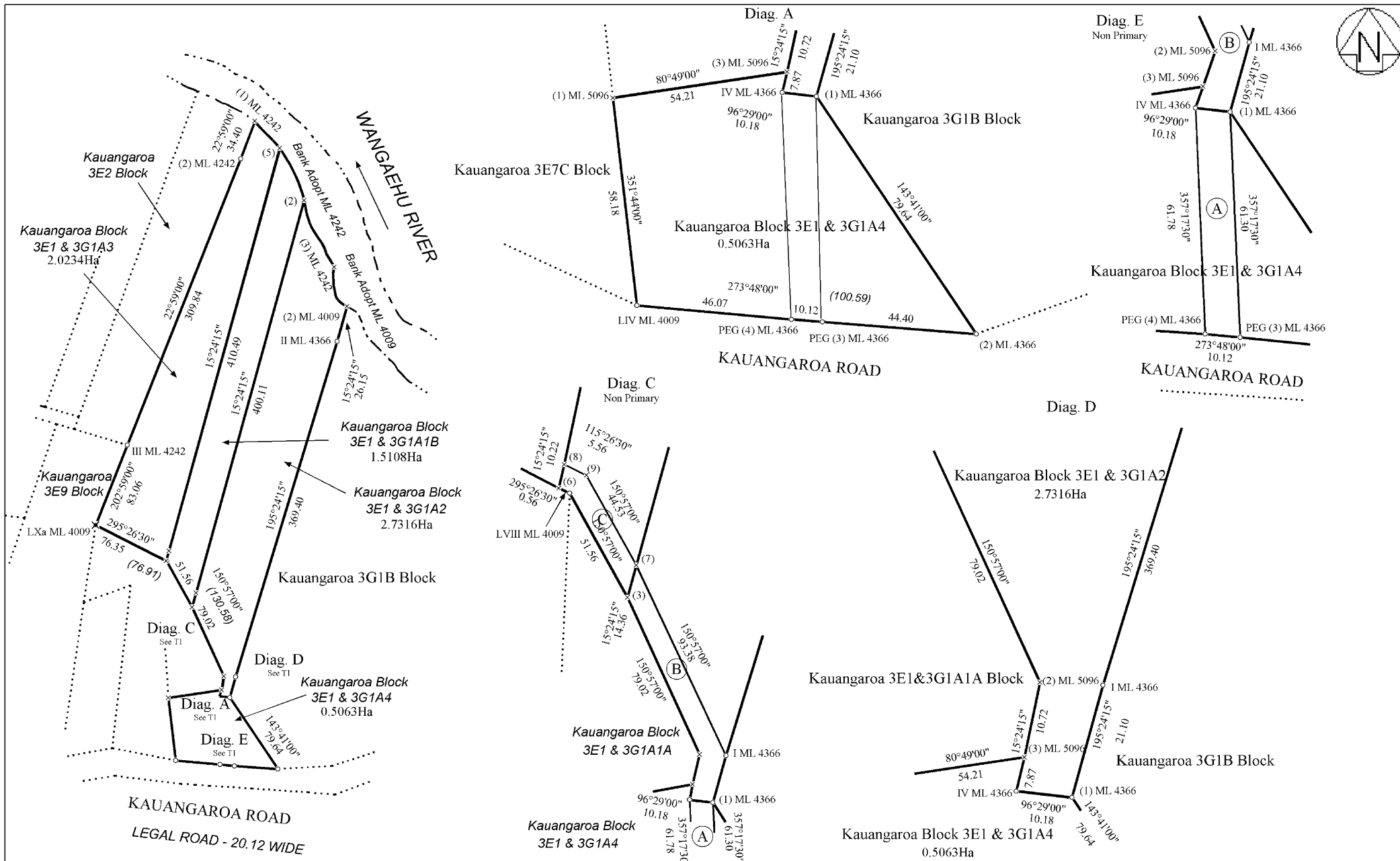
From	To	Code	Bearing	Adpt Surv	Distance	Adpt Surv
PEG III ML 4242	PEG LXa ML 4009	ob0	202°59'00"	A ML 4242	83.06	A ML 4242
PEG II ML 4366	PEG I ML 4366	ob2	195°24'15"	A ML 4366	369.40	A ML 4366
PEG I ML 4366	PEG (1) ML 4366	ob4	195°24'15"	A ML 4366	21.10	A ML 4366
PEG (1) ML 4366	PEG (2) ML 4366	ob5	143°41'00"	A ML 4366	79.64	A ML 4366
PEG (2) ML 4366	PEG (3) ML 4366	ob6	273°48'00"	A ML 4366	44.40	A ML 4366
PEG (3) ML 4366	PEG (4) ML 4366	ob7	273°48'00"	A ML 4366	10.12	A ML 4366
PEG (4) ML 4366	PEG LIV ML 4009	ob9	273°48'00"	A ML 4366	46.07	A ML 4366
PEG LIV ML 4009	UNMK (1) ML 5096	ob11	351°44'00"	A ML 4009	58.18	C
UNMK (1) ML 5096	PEG LVI ML 4009	ob12	351°44'00"	A ML 4009	44.26	C
PEG LVI ML 4009	PEG LVIII ML 4009	ob14	359°33'40"	A ML 4009	89.32	C
PEG LVIII ML 4009	UNMK (6) ML 357249	ob15	295°26'30"	A ML 4009	0.56	C
UNMK (6) ML 357249	PEG LXa ML 4009	ob22	295°26'30"	A ML 4009	76.35	C
PEG (3) ML 4366	PEG (1) ML 4366	ob8	357°17'30"	A ML 4366	61.30	A ML 4366
PEG (4) ML 4366	PEG IV ML 4366	ob10	357°17'30"	A ML 4366	61.78	A ML 4366
PEG IV ML 4366	PEG (1) ML 4366	ob17	96°29'00"	A ML 4366	10.18	A ML 4366
PEG IV ML 4366	UNMK (3) ML 5096	ob18	15°24'15"	C	7.87	A ML 5096
UNMK (3) ML 5096	UNMK (2) ML 5096	ob19	15°24'15"	C	10.72	A ML 5096
UNMK (1) ML 5096	UNMK (3) ML 5096	ob13	80°49'00"	C	54.21	A ML 5096
PEG LVIII ML 4009	UNMK (3) ML 357249	ob16	150°57'00"	C	51.56	A ML 5096
UNMK (3) ML 357249	UNMK (2) ML 5096	ob20	150°57'00"	C	79.02	A ML 5096
PEG II ML 4366	UNMK (2) ML 4009	ob3	15°24'15"	A ML 4366	26.15	A ML 4366
UNMK (3) ML 357249	UNMK (7) ML 357249	ob21	15°24'15"	C	14.36	C
UNMK (7) ML 357249	UNMK (2) ML 357249	ob24	15°24'15"	C	400.11	C
UNMK (6) ML 357249	UNMK (8) ML 357249	ob23	15°24'15"	C	10.22	C
UNMK (8) ML 357249	UNMK (5) ML 357249	ob26	15°24'15"	C	410.49	C
UNMK (8) ML 357249	UNMK (9) ML 357249	ob27	115°26'30"	C	5.56	C
UNMK (9) ML 357249	UNMK (7) ML 357249	ob28	150°57'00"	C	44.53	C
UNMK (7) ML 357249	PEG I ML 4366	ob25	150°57'00"	C	93.38	C
PEG III ML 4242	PEG (2) ML 4242	ob1	22°59'00"	A ML 4242	309.84	A ML 4242
PEG (2) ML 4242	UNMK (1) ML 4242	ob30	22°59'00"	A ML 4242	34.40	A ML 4242
PEG (2) ML 4242	PEG VII ML 4009	ob29	117°37'00"	A ML 4242	20.26	A ML 4242
PEG VII ML 4009	PEG (3) ML 4009	ob31	156°18'00"	A ML 4242	114.67	A ML 4242
PEG (3) ML 4009	PEG VI ML 4009	ob32	156°17'30"	A ML 4242	5.81	A ML 4242
PEG VI ML 4009	PEG II ML 4366	ob34	145°27'00"	A ML 4009	38.66	A ML 4366
PEG (3) ML 4009	UNMK (3) ML 4242	ob33	41°19'00"	A ML 4009	26.15	A ML 4366



Mark and Observation

Survey Number ML 357249
Coordinate System Wanganui OCD

***** End of Report *****



COMPUTED PLAN - AREAS AND BOUNDARIES NOT DEFINED BY SURVEY

Land District: Wellington
 Dataset Type: Computed
 Digitally Generated Plan
 Generated on: 30/08/2005 1:26pm Page 6 of 6

Kauangaroa 3E1 & 3G1A1B, 3E1 & 3G1A2, 3E1 & 3G1A3, 3E1 & 3G1A4

Surveyor: Michael John Snow
 Firm: Beca Infrastructure Ltd
 Survey Date: 09/08/2005

Digital Survey Plan
 ML 357249
 Approved on: 30/08/2005