

Digital Survey Plan - ML 334769

Survey Number ML 334769
Surveyor Reference 3282 Wereta-Osborn Port Levy
Surveyor Jeffrey Fraser Irving
Survey Firm Clark Land Surveyors Ltd
Surveyor Declaration I Jeffrey Fraser Irving, being a person entitled to practise as a licensed cadastral surveyor, certify that -
 (a) The surveys to which this dataset relates are accurate, and were undertaken by me or under my direction in accordance with the Cadastral Survey Act 2002 and the Surveyor-General's Rules for Cadastral Survey 2002/2;
 (b) This dataset is accurate, and has been created in accordance with that Act and those Rules.
 Declared on 10/06/2004.

Survey Details

Dataset Description Koukourarata Maori Reserve 874, 1C1 & 1C2 Blocks
Purpose Partition
Status Approved as to Survey **Type** Survey
Land District Canterbury **Survey Class** Class I Cadastral Survey
Coordinate System Mount Pleasant OCD

Survey Dates

Surveyed Date 25/02/2004 **Certified Date** 10/06/2004
Submitted Date 10/06/2004 11:08:51 **Survey Approval Date** 11/06/2004
Registered Date

Referenced Surveys

Survey Number	Land District	Bearing Correction
SO 5728	Canterbury	0°00'00"
LT 47791	Canterbury	0°00'00"
SO 19035	Canterbury	0°00'00"
SO 5986	Canterbury	0°00'00"
SO 5826	Canterbury	0°00'00"

Territorial Authorities

Banks Peninsula District

Comprised In

CT CB365/88

Created Parcels

Parcels	Parcel Intent	Area	CT Reference
Koukourarata Maori Reserve 874 1C1 Block Maori Land Plan 334769	Maori	0.2023 ha	
Marked A Maori Land Plan 334769	Easement		
Koukourarata Maori Reserve 874 1C2 Block Maori Land Plan 334769	Maori	14.4928 ha	



Digital Survey Plan - ML 334769

Created Parcels

Parcels	Parcel Intent	Area	CT Reference
Marked Z Maori Land Plan 334769	Easement		
Total Area		<hr/> 14.6951 ha	

Mark and Observation

Survey Number ML 334769
Coordinate System Mount Pleasant OCD

From	To	Code	Bearing	Adpt Surv	Distance	Adpt Surv
PEG II SO 5986	Node ID 23776917	ob46	85°26'00"	A SO 5986	5.31	A SO 5986
IT V ML 334769	IT II ML 334769	ob12	334°28'15"	M	164.79	M
IT V ML 334769	Node ID 23776917	ob13	15°11'30"	M	59.83	M
IT V ML 334769	Node ID 23978625	ob14	295°16'30"	M	113.14	M
IT V ML 334769	PEG SO 19035	ob15	300°51'30"	M	97.23	M
IT V ML 334769	PEG SO 5826	ob16	10°01'30"	M	54.86	M
IT V ML 334769	PEG SO 5826	ob17	118°34'00"	M	77.63	M
IT V ML 334769	PEG SO 5826	ob18	16°59'00"	M	22.49	M
IT V ML 334769	PEG I ML 334769	ob19	40°41'00"	M	20.16	M
IT V ML 334769	PEG II ML 334769	ob20	74°47'00"	M	83.57	M
IT V ML 334769	PEG III ML 334769	ob21	101°56'00"	M	86.43	M
IT V ML 334769	PEG IV ML 334769	ob22	112°21'00"	M	55.57	M
IT V ML 334769	PEG V ML 334769	ob23	120°26'00"	M	44.29	M
Node ID 23776917	Node ID 23440299	ob24	85°26'00"	A SO 5986	101.53	A SO 5986
PEG SO 5826	PEG II SO 5986	ob25	14°06'30"	A SO 5986	3.40	A SO 5986
PEG SO 5826	PEG IV ML 334769	ob26	313°35'10"	A SO 5826	23.19	C
PEG SO 5826	PEG SO 5826	ob27	126°56'10"	A SO 5826	209.96	A SO 5826
PEG SO 5826	Node ID 23776917	ob28	14°06'30"	C	37.34	C
PEG I ML 334769	PEG II ML 334769	ob29	84°22'30"	C	67.83	C
PEG I ML 334769	PEG SO 5826	ob30	313°35'10"	C	9.06	C
PEG II ML 334769	PEG III ML 334769	ob31	174°22'30"	C	40.00	C
PEG III ML 334769	PEG IV ML 334769	ob32	264°22'30"	C	33.33	C
PEG IV ML 334769	PEG I ML 334769	ob33	313°35'10"	C	52.82	C
PEG V ML 334769	PEG IV ML 334769	ob34	84°22'30"	C	13.27	C
PEG V ML 334769	PEG SO 5826	ob35	133°35'10"	A SO 5826	32.44	C
Node ID 24157892	PEG II SO 5986	ob36	85°26'00"	A SO 5986	5.31	A SO 5986
Node ID 24157892	PEG SO 5826	ob37	194°06'30"	C	39.79	C
Node ID 24157892	Node ID 23405752	ob38	265°26'00"	A SO 5826	39.07	A SO 5986
PEG SO 5826	PEG V ML 334769	ob39	133°35'10"	C	59.09	C
Node ID 23693588	Node ID 23958688	ob65	138°00'00"	A SO 5728	188.52	A SO 5728
IS XVI SO 5986	IT I SO 19035	ob40	205°14'00"	A SO 19035	45.86	A SO 19035
IS XVI SO 5986	Node ID 24109687	ob41	197°34'00"	A SO 19035	14.55	A SO 19035
IT I SO 19035	IT III DP 47791	ob42	71°54'20"	A SO 19035	292.55	A SO 19035
IT I SO 19035	Node ID 23978625	ob43	204°41'30"	A SO 19035	49.94	A SO 19035
Node ID 23440299	Node ID 23225002	ob44	348°26'00"	A SO 5986	35.39	A SO 5986
Node ID 23405752	PEG SO 5826	ob45	198°35'00"	A SO 5826	114.38	A SO 5826
Node ID 23225002	Node ID 23846873	ob47	83°46'00"	A SO 5826	12.55	A SO 5826
Node ID 23846873	Node ID 23693588	ob48	138°00'00"	A SO 5728	229.34	A SO 5728
Node ID 23958688	PEG SO 5826	ob49	260°06'15"	A SO 5826	18.89	A SO 5826
PEG SO 5826	PEG SO 5826	ob50	260°06'15"	A SO 5826	39.59	A SO 5826
PEG SO 5826	Node ID 24118110	ob51	260°06'15"	A SO 5826	603.69	A SO 5826
Node ID 24118110	Node ID 23969024	ob52	13°43'55"	A SO 5826	47.27	A SO 5826
PEG SO 5826	PEG SO 5826	ob53	119°22'00"	A SO 5826	86.66	A SO 5826

Mark and Observation

Survey Number ML 334769
Coordinate System Mount Pleasant OCD

From	To	Code	Bearing	Adpt Surv	Distance	Adpt Surv
PEG SO 5826	PEG SO 5826	ob54	94°49'18"	A SO 5826	72.12	A SO 5826
PEG SO 5826	PEG SO 5826	ob55	126°56'10"	A SO 5826	211.21	A SO 5826
PEG SO 5826	PEG SO 5826	ob56	119°22'00"	A SO 5826	89.52	A SO 5826
PEG SO 5826	PEG SO 5826	ob57	94°49'18"	A SO 5826	36.02	A SO 5826
IT III DP 47791	IS II LT 47791	ob0	34°13'00"	M	39.40	M
IT III DP 47791	IT IV LT 47791	ob1	49°57'30"	M	205.77	M
IT III DP 47791	IT I ML 334769	ob2	248°45'30"	M	188.63	M
IT IV LT 47791	IS XVI SO 5986	ob3	246°24'00"	A SO 19035	454.04	A SO 19035
IT IV LT 47791	IT III ML 334769	ob4	253°22'30"	M	540.91	M
IT III ML 334769	IR IV ML 334769	ob5	86°27'10"	M	64.02	M
IR IV ML 334769	IT III DP 47791	ob6	86°27'10"	M	297.43	M
IT I ML 334769	IT II ML 334769	ob7	289°29'30"	M	97.41	M
IT I ML 334769	IT V ML 334769	ob8	190°09'00"	M	118.05	M
IT II ML 334769	Node ID 24109687	ob9	170°14'00"	M	27.81	M
IT II ML 334769	IR IV ML 334769	ob10	300°50'00"	M	34.03	M
IT II ML 334769	IT III DP 47791	ob11	82°22'30"	M	270.03	M
Node ID 23969024	Node ID 23720445	ob58	2°18'00"	A SO 5826	193.00	A SO 5826
Node ID 23720445	Node ID 23124244	ob59	23°03'06"	A SO 5826	6.96	A SO 5826
Node ID 23124244	Node ID 23858763	ob60	109°14'00"	A SO 5826	37.02	A SO 5826
PEG SO 5826	PEG SO 5826	ob61	288°42'00"	A SO 5826	1.61	A SO 5826
PEG SO 5826	PEG SO 5826	ob62	198°42'00"	A SO 5826	6.86	A SO 5826
PEG SO 5826	Node ID 23389203	ob63	188°16'00"	A SO 5826	93.76	A SO 5826
Node ID 23389203	Node ID 23598252	ob64	273°15'00"	A SO 5826	91.25	A SO 5826

Mark Name	Description
IS II LT 47791	d 0.20
IT I ML 334769	D 0.25
IT II ML 334769	D0.25
IT III DP 47791	d0.3 in lawn
IT III ML 334769	D 0.30
IT IV LT 47791	D 0.20
IT V ML 334769	d0.30
PEG SO 5826	D0.10
PEG SO 5826	d 0.20

*** End of Report ***

Schedule / Memorandum

Land Registration District

Canterbury

Plan Number

ML 334769

Territorial Authority (the Council)

Banks Peninsula District Council

Schedule of Easements

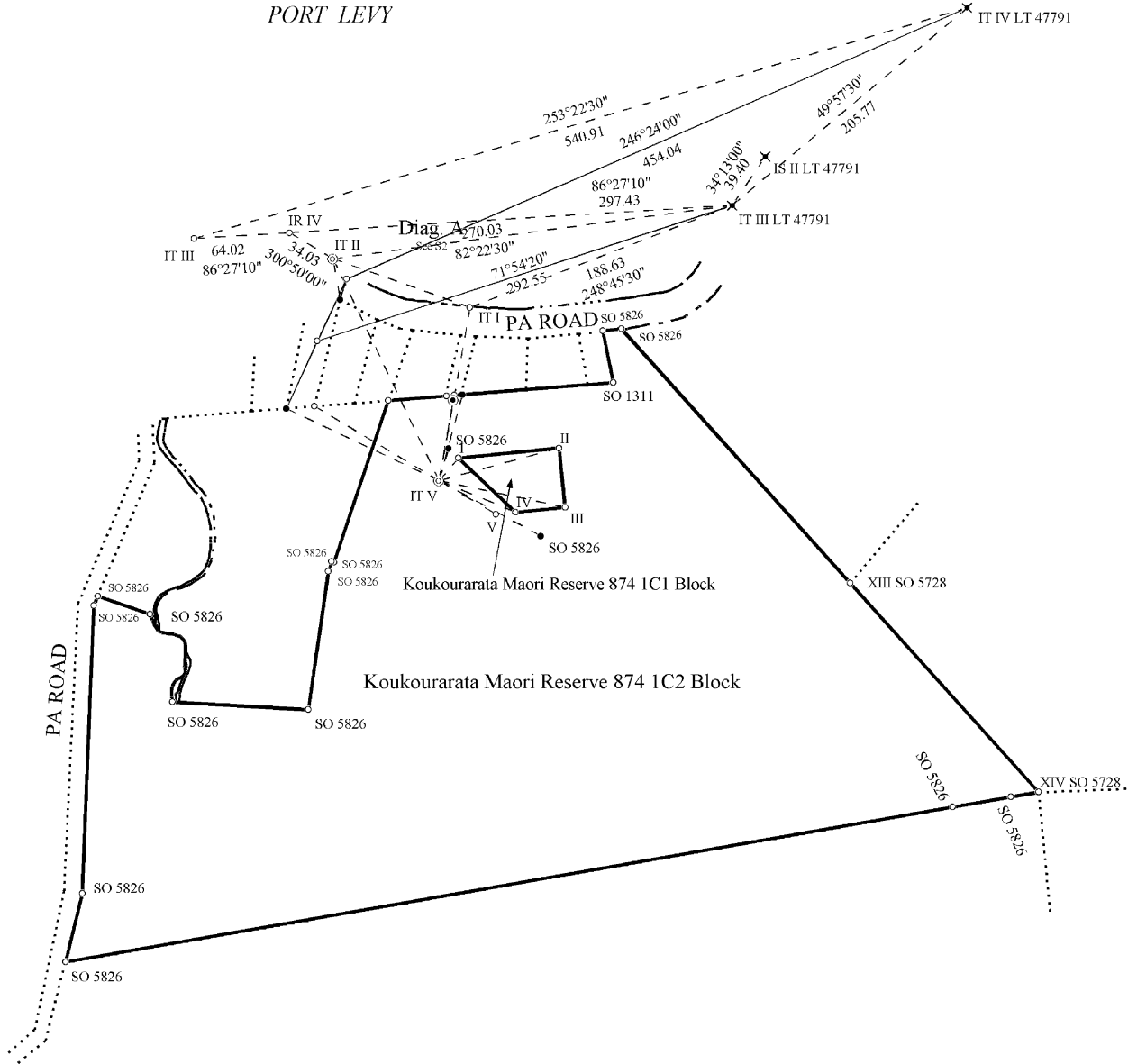
Purpose	Shown	Servient Tenement	Dominant Tenement
Right of Way Right to convey Electricity, Telecommunications and Computer Media	A	Koukourarata Maori Reserve 874 1C2 Block	Koukourarata Maori Reserve 874 1C1 Block

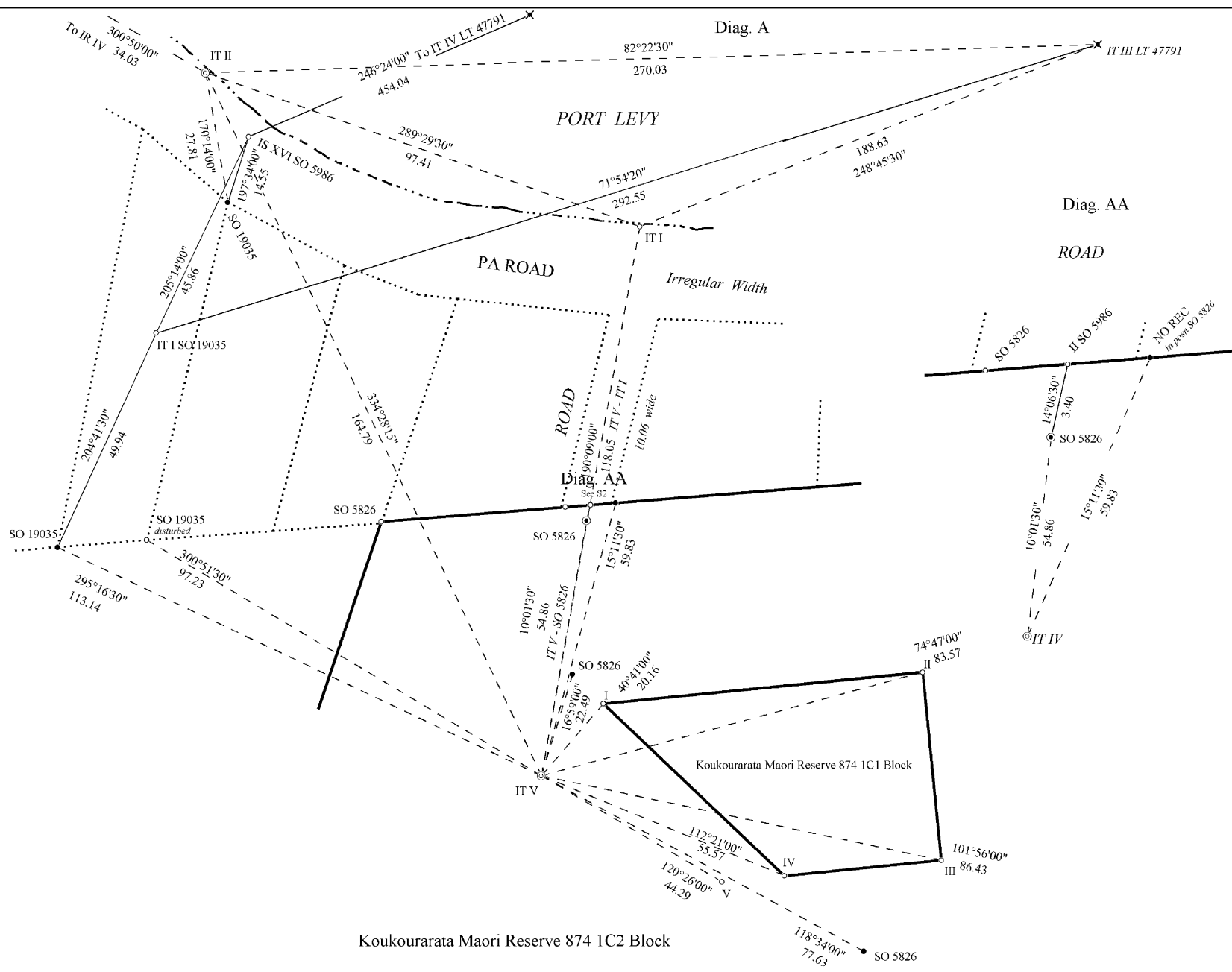
Existing Easements

Purpose	Shown	Servient Tenement	Document
Right of Way	A & Z	Koukourarata Maori Reserve 874 1C2 Block	Partition Order 87/92 SO 5826



PORT LEVY





Land District: Canterbury

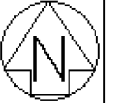
Koukourarata Maori Reserve 874, 1C1 & 1C2 Blocks

Surveyor: Jeffrey Fraser Irving
Firm: Clark Land Surveyors Ltd
Survey Date: 25/02/2004

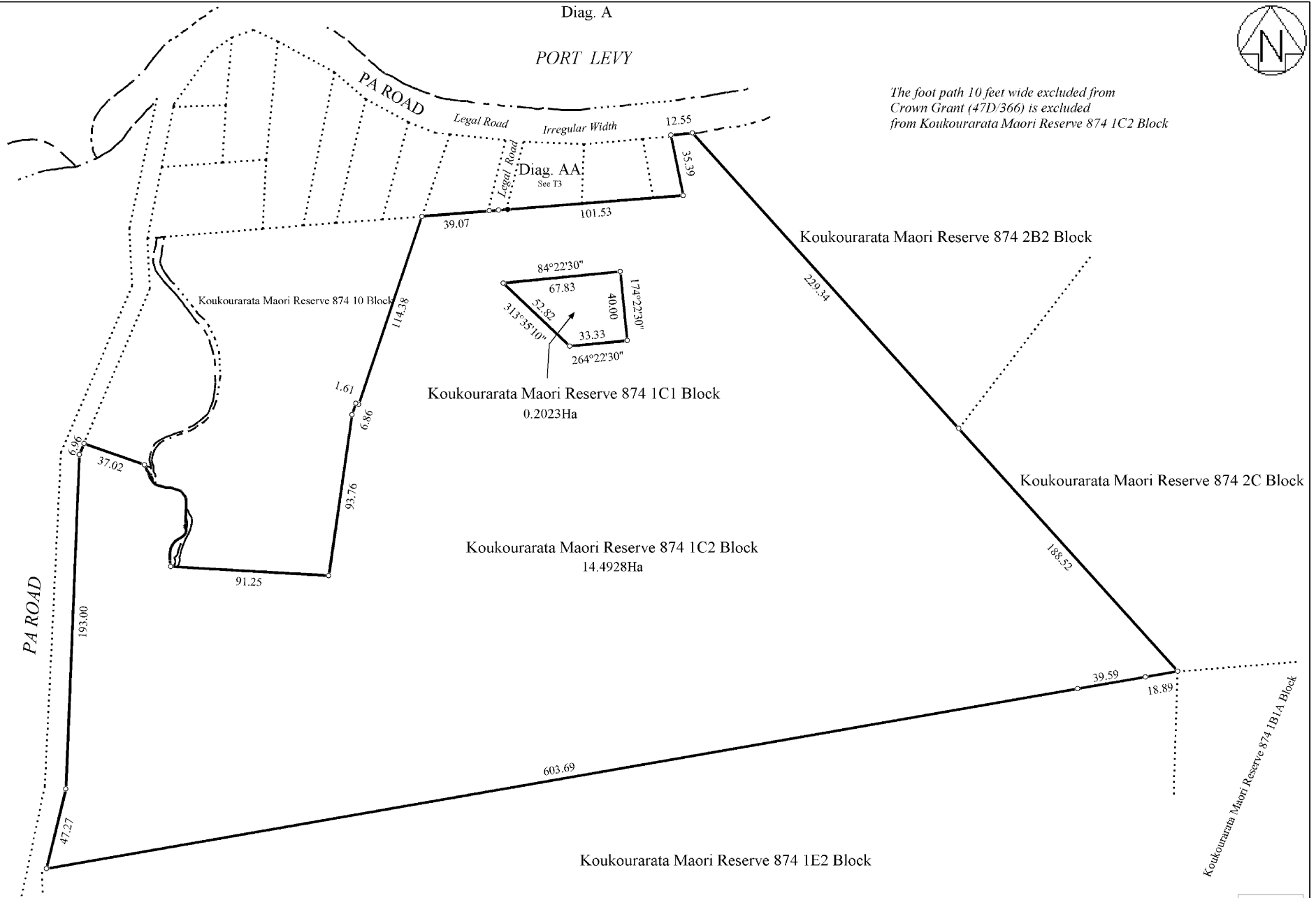
Digital Survey Plan
ML 334769
Approved on: 11/06/2004

Diag. A

PORT LEVY



The foot path 10 feet wide excluded from Crown Grant (47D/366) is excluded from Koukourarata Maori Reserve 874 1C2 Block



T 1/3

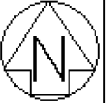
Land District: Canterbury

Koukourarata Maori Reserve 874, 1C1 & 1C2 Blocks

Surveyor: Jeffrey Fraser Irving
Firm: Clark Land Surveyors Ltd
Survey Date: 25/02/2004

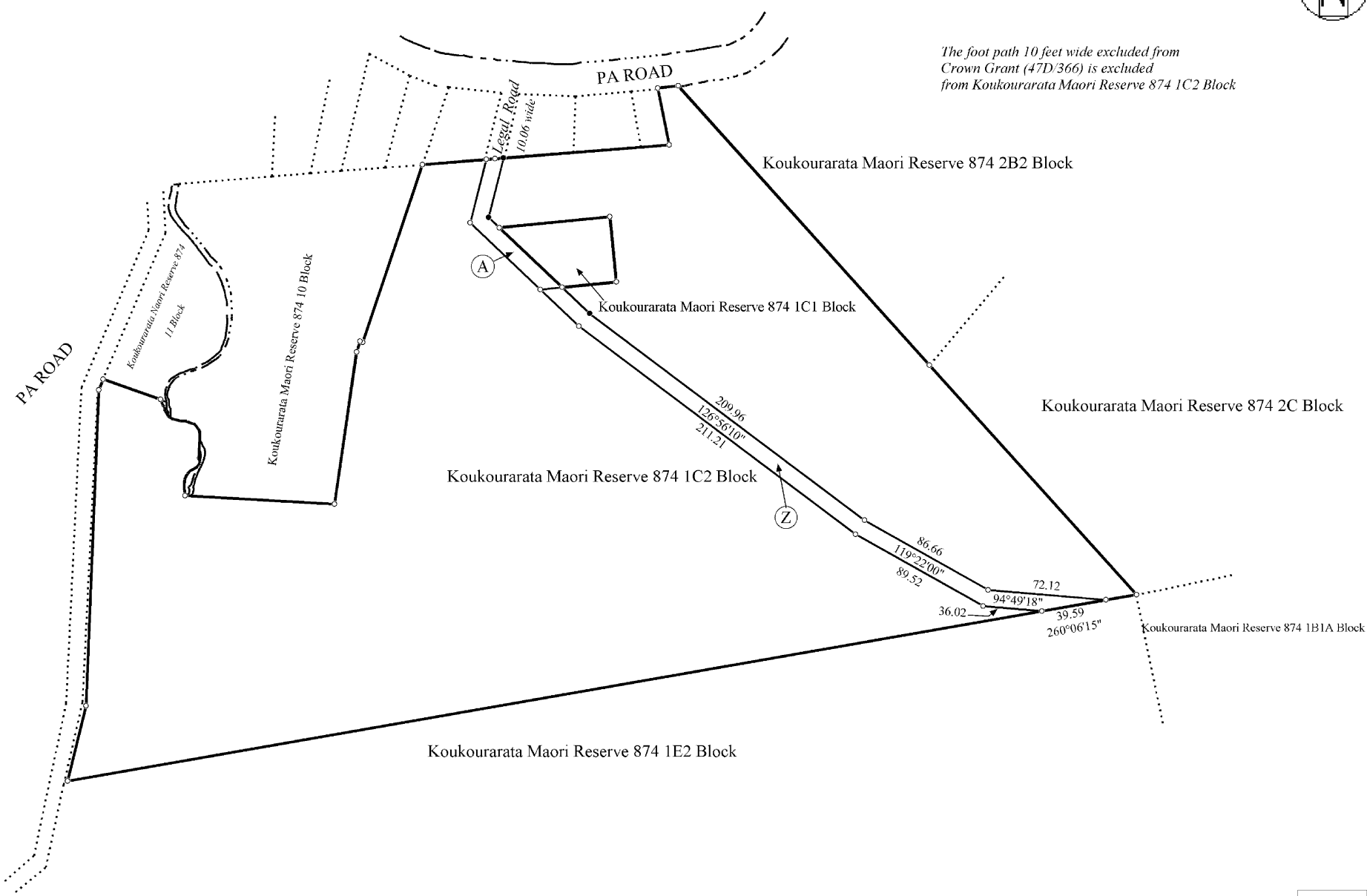
Digital Survey Plan
ML 334769
Approved on: 11/06/2004

Digitally Generated Plan
Generated on: 11/06/2004 10:06am Page 8 of 10



Non Primary

The foot path 10 feet wide excluded from Crown Grant (47D/366) is excluded from Koukourarata Maori Reserve 874 1C2 Block



T 2/3

Land District: Canterbury

Koukourarata Maori Reserve 874, 1C1 & 1C2 Blocks

Surveyor: Jeffrey Fraser Irving
Firm: Clark Land Surveyors Ltd
Survey Date: 25/02/2004

Digital Survey Plan
ML 334769
Approved on: 11/06/2004

Digitally Generated Plan
Generated on: 11/06/2004 10:06am Page 9 of 10



Diag. AA
Non Primary

