



Digital Survey Plan - DP 340366

Survey Number	DP 340366
Surveyor Reference	3520 - Haunui Trust Lease Plan
Surveyor	Jeffrey Fraser Irving
Survey Firm	Clark Land Surveyors (2004) Ltd
Surveyor Declaration	I Jeffrey Fraser Irving, being a person entitled to practise as a licensed cadastral surveyor, certify that - (a) The surveys to which this dataset relates are accurate, and were undertaken by me or under my direction in accordance with the Cadastral Survey Act 2002 and the Surveyor-General's Rules for Cadastral Survey 2002/2; (b) This dataset is accurate, and has been created in accordance with that Act and those Rules. Declared on 10/08/2004.

Survey Details

Dataset Description	Lots 1 - 8 Being Leases over Lot 2 DP 69276 and Sections 1 & 6 Blk VII Town of Darfield		
Purpose	Lease		
Status	Deposited	Type	Computed
Land District	Canterbury	Survey Class	Class I Cadastral Survey
Coordinate System	Mount Pleasant 1949		

Survey Dates

Surveyed Date	26/07/2004	Certified Date	10/08/2004
Submitted Date	10/08/2004 10:46:22	Survey Approval Date	10/08/2004
Deposit Date	21/03/2005		

Referenced Surveys

Survey Number	Land District	Bearing Correction
DP 69276	Canterbury	0°00'00"
SO 859	Canterbury	0°00'00"
DP 74008	Canterbury	0°00'00"

Territorial Authorities

Selwyn District

Comprised In

CT CB25A/95
CT CB28A/447
CT CB40B/767

Created Parcels

Parcels	Parcel Intent	Area	CT Reference
Lot 3 Deposited Plan 340366	Lease	0.0171 ha	
Lot 4 Deposited Plan 340366	Lease	0.0210 ha	
Lot 5 Deposited Plan 340366	Lease	0.0287 ha	
Lot 6 Deposited Plan 340366	Lease	0.0016 ha	
Lot 7 Deposited Plan 340366	Lease	0.0156 ha	
Lot 8 Deposited Plan 340366	Lease	0.0134 ha	



Digital Survey Plan - DP 340366

Created Parcels

Parcels	Parcel Intent	Area	CT Reference
Lot 1 Deposited Plan 340366	Lease	0.0344 ha	206240
Lot 2 Deposited Plan 340366	Lease	0.0308 ha	206241
Total Area		<u>0.1626 ha</u>	



Mark and Observation

Survey Number DP 340366
Coordinate System Mount Pleasant 1949

From	To	Code	Bearing	Adpt Surv	Distance	Adpt Surv
Node ID 24141998	UNMK DP 340366	ob0	56°02'05"	C	13.08	C
UNMK DP 340366	UNMK DP 340366	ob1	56°02'05"	C	14.75	C
UNMK DP 340366	Node ID 23795070	ob2	56°02'05"	C	14.01	C
UNMK DP 340366	UNMK DP 340366	ob3	158°26'00"	C	21.58	C
Node ID 23795070	Node ID 23709802	ob4	146°16'30"	C	21.12	C
Node ID 23709802	UNMK DP 340366	ob5	236°17'00"	C	18.60	C
UNMK DP 340366	UNMK DP 340366	ob6	236°17'00"	C	14.52	C
UNMK DP 340366	UNMK DP 340366	ob7	337°53'00"	C	21.47	C
UNMK DP 340366	Node ID 23544126	ob8	236°17'00"	C	17.17	C
Node ID 24025900	UNMK DP 340366	ob9	168°24'20"	C	33.84	C
Node ID 24025900	UNMK DP 340366	ob10	187°36'35"	C	53.20	C
UNMK DP 340366	UNMK DP 340366	ob11	97°55'00"	C	12.60	C
UNMK DP 340366	Node ID 23512287	ob12	187°36'35"	C	13.64	C
Node ID 23512287	UNMK DP 340366	ob13	97°37'25"	C	12.53	C
UNMK DP 340366	UNMK DP 340366	ob14	97°37'25"	C	15.30	C
UNMK DP 340366	UNMK DP 340366	ob15	97°37'25"	C	3.29	C
UNMK DP 340366	Node ID 23894607	ob16	97°37'25"	C	16.28	C
UNMK DP 340366	UNMK DP 340366	ob17	353°01'00"	C	14.03	C
Node ID 23894607	UNMK DP 340366	ob18	7°18'00"	C	8.00	C
Node ID 23894607	UNMK DP 340366	ob19	56°17'00"	C	5.29	C
UNMK DP 340366	Node ID 23461992	ob20	7°18'00"	C	4.96	C
UNMK DP 340366	UNMK DP 340366	ob21	56°17'00"	C	11.20	C
UNMK DP 340366	UNMK DP 340366	ob22	325°30'00"	C	12.60	C
UNMK DP 340366	UNMK DP 340366	ob23	146°17'00"	C	17.28	C
UNMK DP 340366	UNMK DP 340366	ob24	52°30'00"	C	6.80	C
UNMK DP 340366	UNMK DP 340366	ob25	187°55'00"	C	13.58	C
UNMK DP 340366	UNMK DP 340366	ob26	142°30'00"	C	12.98	C
UNMK DP 340366	UNMK DP 340366	ob27	180°00'00"	C	9.33	C
UNMK DP 340366	UNMK DP 340366	ob28	326°17'00"	C	6.01	C
UNMK DP 340366	UNMK DP 340366	ob29	56°17'00"	C	3.80	C
UNMK DP 340366	UNMK DP 340366	ob30	15°00'00"	C	3.80	C
UNMK DP 340366	UNMK DP 340366	ob31	55°30'00"	C	4.51	C
UNMK DP 340366	UNMK DP 340366	ob32	145°30'00"	C	15.17	C
UNMK DP 340366	UNMK DP 340366	ob33	325°30'00"	C	1.00	C
UNMK DP 340366	UNMK DP 340366	ob34	235°30'00"	C	5.00	C
UNMK DP 340366	UNMK DP 340366	ob35	195°00'00"	C	3.80	C
UNMK DP 340366	UNMK DP 340366	ob36	228°46'00"	C	0.77	C
UNMK DP 340366	UNMK DP 340366	ob37	285°00'00"	C	6.70	C
UNMK DP 340366	UNMK DP 340366	ob38	277°37'15"	C	2.50	C
UNMK DP 340366	UNMK DP 340366	ob39	15°00'00"	C	5.60	C
UNMK DP 340366	UNMK DP 340366	ob40	352°23'00"	C	3.32	C
UNMK DP 340366	UNMK DP 340366	ob41	56°17'00"	C	6.74	C
UNMK DP 340366	UNMK DP 340366	ob42	98°00'00"	C	3.20	C



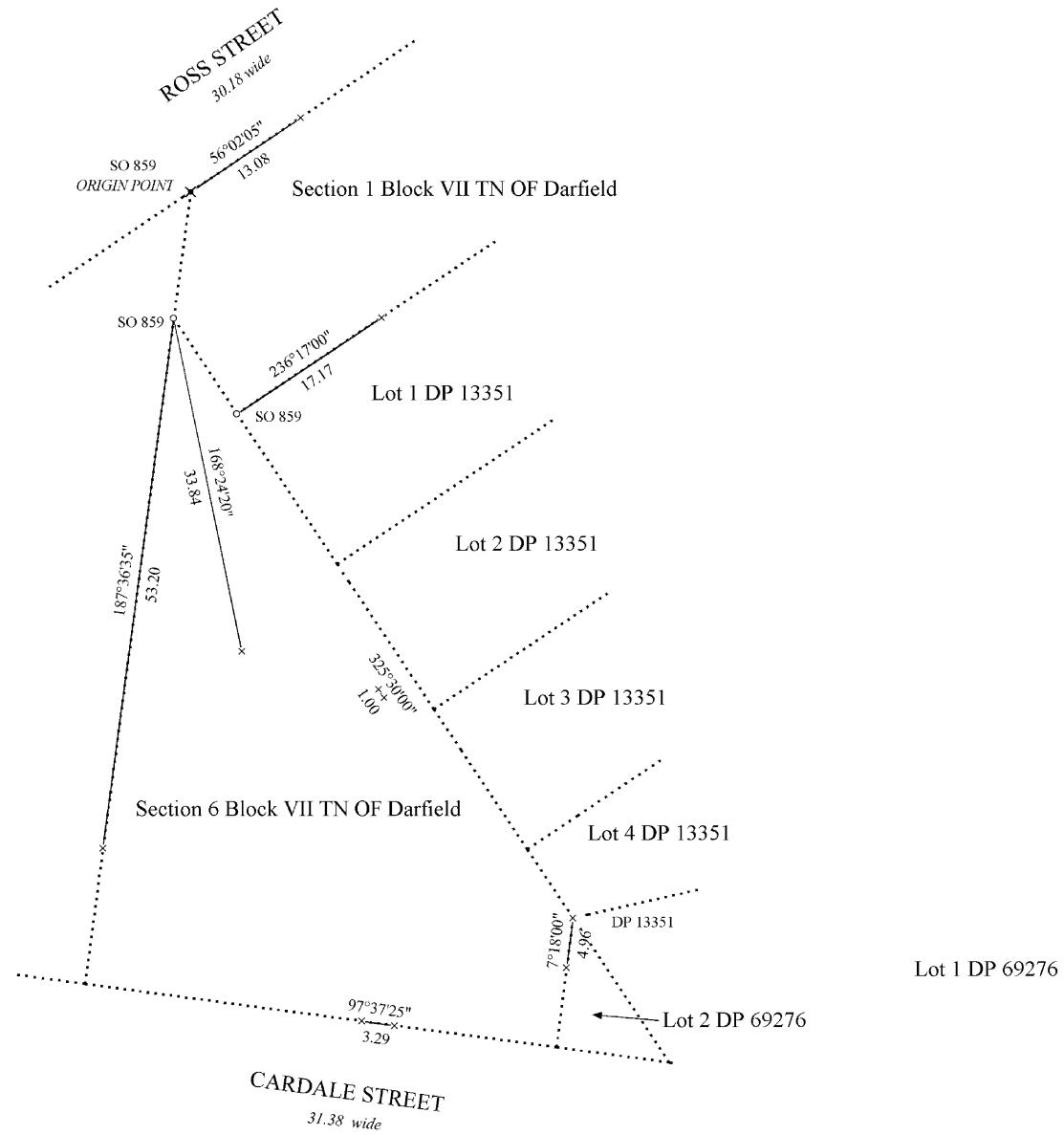
Mark and Observation

Survey Number DP 340366

Coordinate System Mount Pleasant 1949

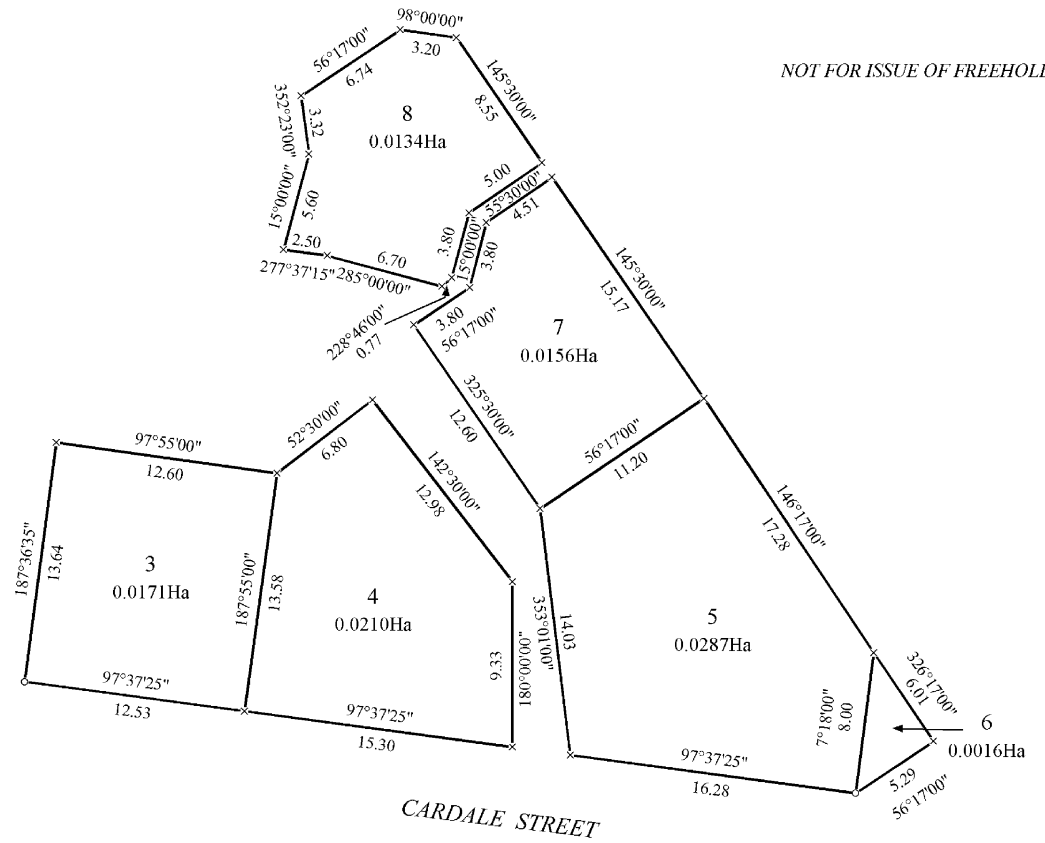
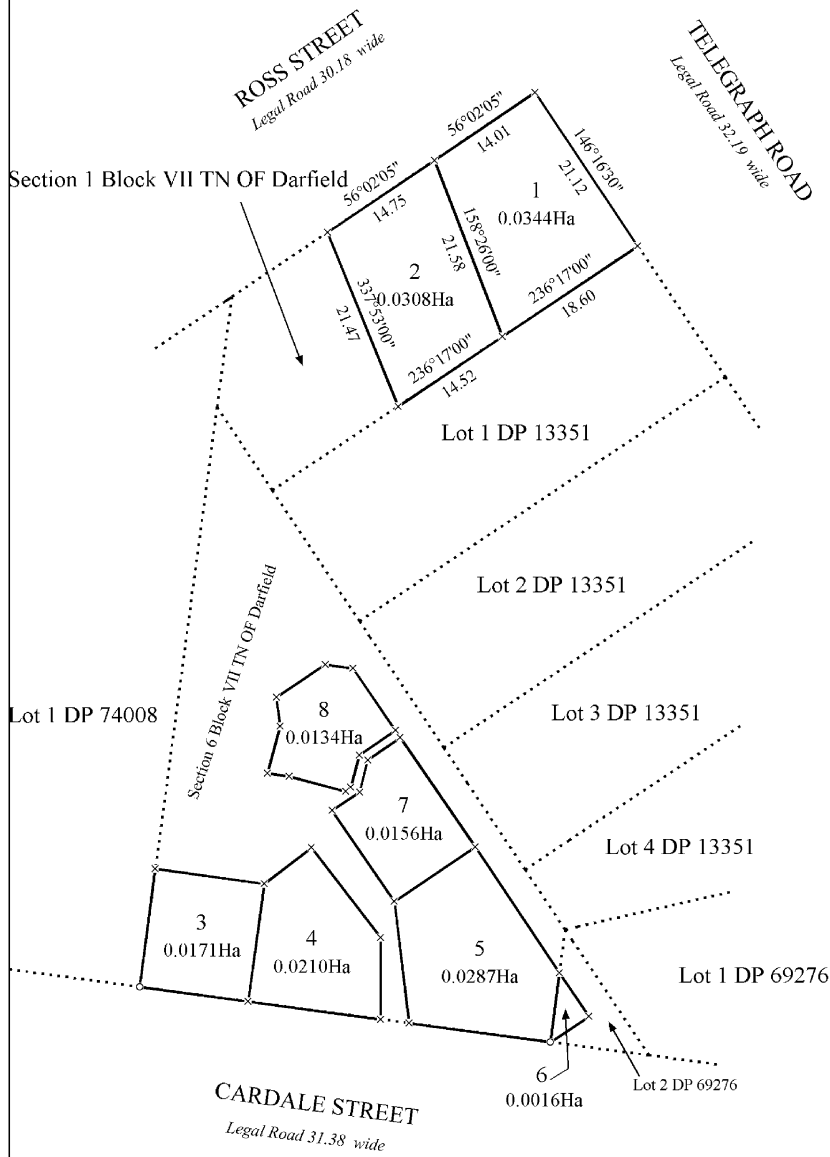
From	To	Code	Bearing	Adpt Surv	Distance	Adpt Surv
UNMK DP 340366	UNMK DP 340366	ob43	145°30'00" C		8.55 C	

*** End of Report ***



Non Primary

Diag. A
Non Primary



NOT FOR ISSUE OF FREEHOLD TITLE

FOR LEASE PURPOSES ONLY

T 1/1

Land District: Canterbury
 Dataset Type: Computed
 Digitally Generated Plan
 Generated on: 21/03/2005 12:11am Page 6 of 6

Lots 1 - 8 Being Leases over Lot 2 DP 69276 and Sections 1 & 6 Blk VII Town of Darfield

Surveyor: Jeffrey Fraser Irving
 Firm: Clark Land Surveyors (2004) Ltd
 Survey Date: 26/07/2004

Digital Survey Plan
 DP 340366
 Deposited on: 21/03/2005