



Digital Survey Plan - DP 344528

Survey Number DP 344528
Surveyor Reference 8293 Smith - Springs Road
Surveyor Jeremy Marc Gutsell
Survey Firm Glasson Potts Fowler Ltd
Surveyor Declaration I Jeremy Marc Gutsell, being a person entitled to practise as a licensed cadastral surveyor, certify that -
(a) The surveys to which this dataset relates are accurate, and were undertaken by me or under my direction in accordance with the Cadastral Survey Act 2002 and the Surveyor-General's Rules for Cadastral Survey 2002/2;
(b) This dataset is accurate, and has been created in accordance with that Act and those Rules.
Declared on 14/01/2005.

Survey Details

Dataset Description Lots 1 - 3 being subdivision of Lot 1 DP40474
Purpose LT Subdivision
Status Deposited **Type** Survey
Land District Canterbury **Survey Class** Class II Cadastral Survey
Coordinate System Mount Pleasant 2000

Survey Dates

Surveyed Date 22/10/2004 **Certified Date** 14/01/2005
Submitted Date 14/01/2005 09:16:00 **Survey Approval Date** 18/01/2005
Deposit Date 05/04/2005

Referenced Surveys

Survey Number	Land District	Bearing Correction
LT 41499	Canterbury	-0°00'10"
DP 40474	Canterbury	0°00'00"
DP 12756	Canterbury	-0°00'10"
DP 34263	Canterbury	0°00'00"
DP 39616	Canterbury	0°00'00"
DP 805	Canterbury	-0°00'10"
DP 10914	Canterbury	0°00'00"
SO 797	Canterbury	0°00'00"

Territorial Authorities

Selwyn District

Comprised In

CT CB18B/108

Created Parcels

Parcels	Parcel Intent	Area	CT Reference
Lot 1 Deposited Plan 344528	Fee Simple Title	4.0023 ha	183362
Lot 2 Deposited Plan 344528	Fee Simple Title	31.3793 ha	183363



Digital Survey Plan - DP 344528

Created Parcels

Parcels	Parcel Intent	Area	CT Reference
Lot 3 Deposited Plan 344528	Vesting on Deposit for Road	0.0017 ha	
Marked A Deposited Plan 344528	Covenant Area		
Total Area		<hr/> 35.3833 ha	



Mark and Observation

Survey Number DP 344528
Coordinate System Mount Pleasant 2000

From	To	Code	Bearing	Adpt Surv	Distance	Adpt Surv
IT IV DP 12756	IT II LT 41499	ob3	57°53'35"	M	590.36	M
IT II LT 41499	IT II DP 34263	ob5	300°59'27"	M	339.23	M
IT II LT 41499	IT 8A SO 797	ob6	175°49'45"	M	617.13	M
IT II LT 41499	IR I DP 344528	ob7	258°05'05"	M	410.83	M
IT II LT 41499	IT VII LT 41499	ob8	204°36'40"	M	269.52	M
IT II LT 41499	PEG 1/2a DP 344528	ob9	200°59'21"	M	144.55	M
IT II LT 41499	PEG 1/2b DP 344528	ob10	202°03'37"	M	263.80	M
IT II LT 41499	PEG 2/3/Ra DP 344528	ob11	237°49'04"	M	570.35	M
IT II LT 41499	PEG 2/3/Rb DP 344528	ob12	238°41'29"	M	568.38	M
IT II LT 41499	PEG 1/2/Ra DP 344528	ob13	258°02'38"	M	403.65	M
IT II LT 41499	PEG 1/2/Rb DP 344528	ob14	274°16'40"	M	348.89	M
IT IV DP 12756	IT II DP 33559	ob4	23°11'30"	A LT 41499	14.50	A LT 41499
IT II DP 33559	IR I DP 344528	ob28	23°11'30"	A LT 41499	234.56	A LT 41499
IR I DP 344528	IT XX DP 10914	ob18	23°11'30"	A LT 41499	244.36	A LT 41499
IT II LT 41499	IT II DP 344528	ob15	294°34'10"	M	336.15	M
IT XX DP 10914	IT II DP 34263	ob30	23°11'30"	A LT 41499	37.92	A LT 41499
IT II DP 33559	PEG III DP 12756	ob29	93°51'50"	A DP 12756	6.40	A DP 12756
PEG III DP 12756	PEG 2/3/Rb DP 344528	ob31	23°11'30"	C	6.00	C
PEG 2/3/Rb DP 344528	PEG 1/2/Ra DP 344528	ob23	23°11'30"	C	230.36	C
PEG 1/2/Ra DP 344528	PEG 1/2/Rb DP 344528	ob25	23°11'30"	C	119.29	C
PEG 1/2/Rb DP 344528	PEG VIII DP 39616	ob27	23°11'30"	C	127.24	C
PEG VIII DP 39616	IT XX DP 10914	ob33	248°10'50"	A LT 41499	8.54	A LT 41499
PEG 1/2/Ra DP 344528	POSN A1 DP 344528	ob26	118°32'15"	C	4.75	C
POSN A1 DP 344528	POSN A2 DP 344528	ob35	118°32'15"	C	63.76	C
POSN A2 DP 344528	PEG 1/2b DP 344528	ob37	118°32'15"	C	268.22	C
POSN A1 DP 344528	POSN A3 DP 344528	ob36	174°22'00"	C	16.25	C
PEG III DP 12756	PEG 2/3/Ra DP 344528	ob32	118°58'15"	C	6.00	C
PEG 2/3/Ra DP 344528	PEG DP 12756	ob22	118°58'15"	C	618.65	C
PEG DP 12756	IT 8A SO 797	ob38	228°11'50"	A DP 12756	18.15	A DP 12756
PEG 1/2b DP 344528	PEG 1/2a DP 344528	ob21	23°21'30"	C	119.31	C
PEG 1/2a DP 344528	PEG 1/2/Rb DP 344528	ob20	298°31'40"	C	337.07	C
PEG VIII DP 39616	PEG DP 10914	ob34	113°10'20"	A DP 12756	777.09	A DP 12756



Mark and Observation

Survey Number DP 344528

Coordinate System Mount Pleasant 2000

From	To	Code	Bearing	Adpt Surv	Distance	Adpt Surv
PEG DP 10914	PEG DP 805	ob39	214°04'50"	A DP 12756	220.12	A DP 12756
PEG DP 805	PEG DP 805	ob40	298°45'50"	A DP 805	81.92	A DP 805
PEG DP 805	PEG DP 12756	ob41	208°41'50"	A DP 12756	339.63	A DP 12756
PEG 2/3/Rb DP 344528	PEG 2/3/Ra DP 344528	ob24	161°05'00"	C	8.90	C
IT II DP 26847	IT 8A SO 797	ob42	118°58'15"	A LT 41499	298.02	A LT 41499
IT IV DP 12756	IT II DP 26847	ob0	118°58'15"	A LT 41499	324.89	A LT 41499
IT II DP 26847	IT VII LT 41499	ob43	24°36'40"	A LT 41499	248.72	A LT 41499
IR I DP 344528	PEG 1/2/Ra DP 344528	ob16	80°22'00"	C	7.19	C
IT VII LT 41499	PEG 1/2b DP 344528	ob19	87°37'00"	C	13.18	C
IR I DP 344528	PEG 1/2/Rb DP 344528	ob17	25°59'50"	C	123.33	C
IT IV DP 12756	PEG 2/3/Rb DP 344528	ob1	38°08'00"	C	23.41	C
IT IV DP 12756	PEG 2/3/Ra DP 344528	ob2	60°03'00"	C	20.02	C



Mark and Observation

Survey Number DP 344528

Coordinate System Mount Pleasant 2000

From	To	Code	Chord Bearing	Arc Length	Radius	Adpt Surv
POSN A3 DP 344528	POSN A2 DP 344528	ob44	104°42'30"	72.95	30.00	C

Mark Name	Description
IR I DP 344528	d0.1 replaces OIT I DP 12756
IT 8A SO 797	d0.6
IT II DP 34263	d0.1
IT II DP 344528	OIT XIX DP 10914 found 0.04m SE of line
IT II LT 41499	d0.4 in conc
IT VII LT 41499	d0.3

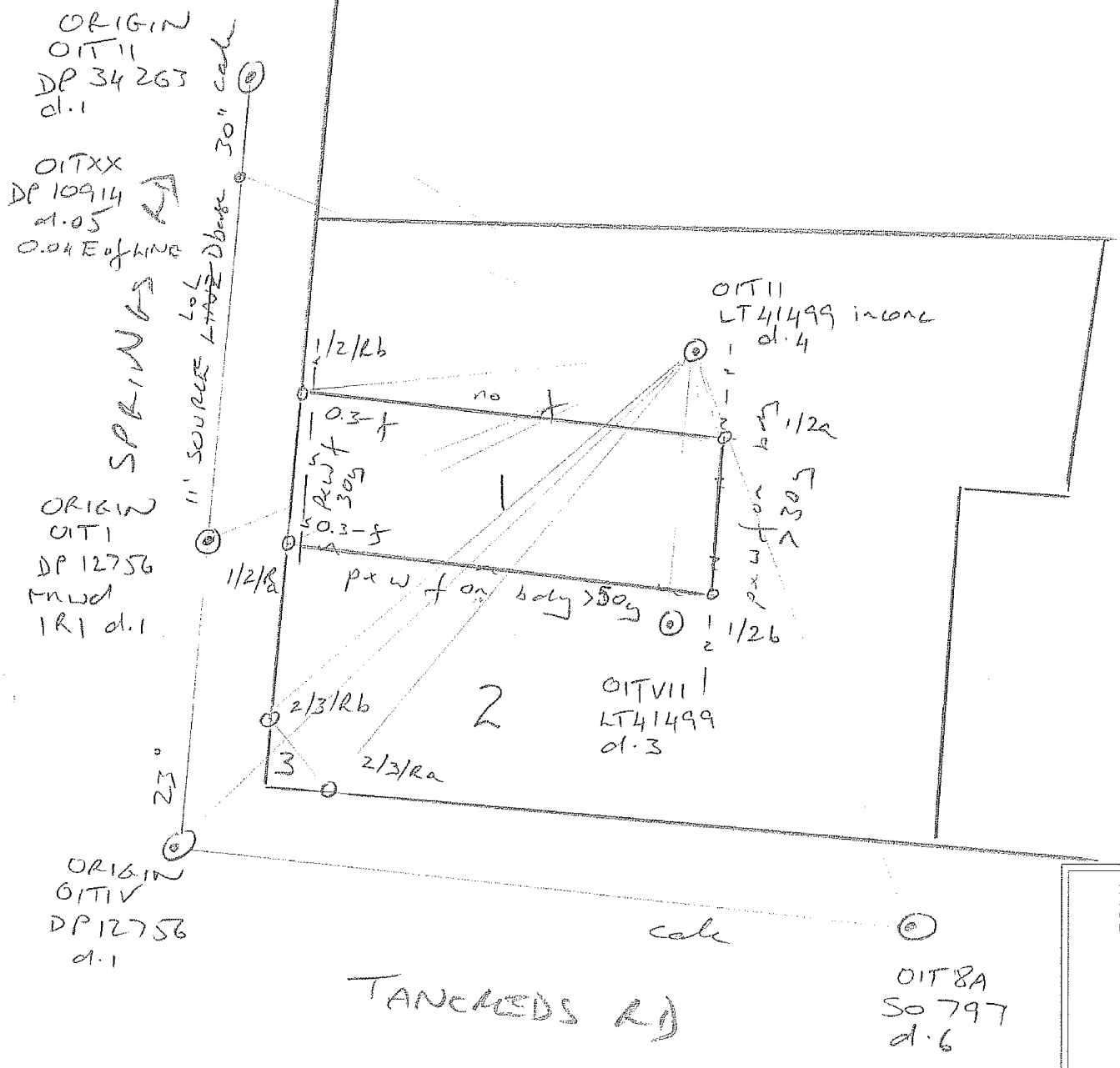
*** End of Report ***

Occupation Diagram
 the drawing room
 N.24B

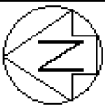
SURVEYOR'S PAGE 8293/1	SURVEYOR [Signature]	DATE 22/10/04	FB. No. PLAN No. 344528
---------------------------	-------------------------	------------------	----------------------------

Instr Trimble #700
 SN 0220230360
 SW 0220227368

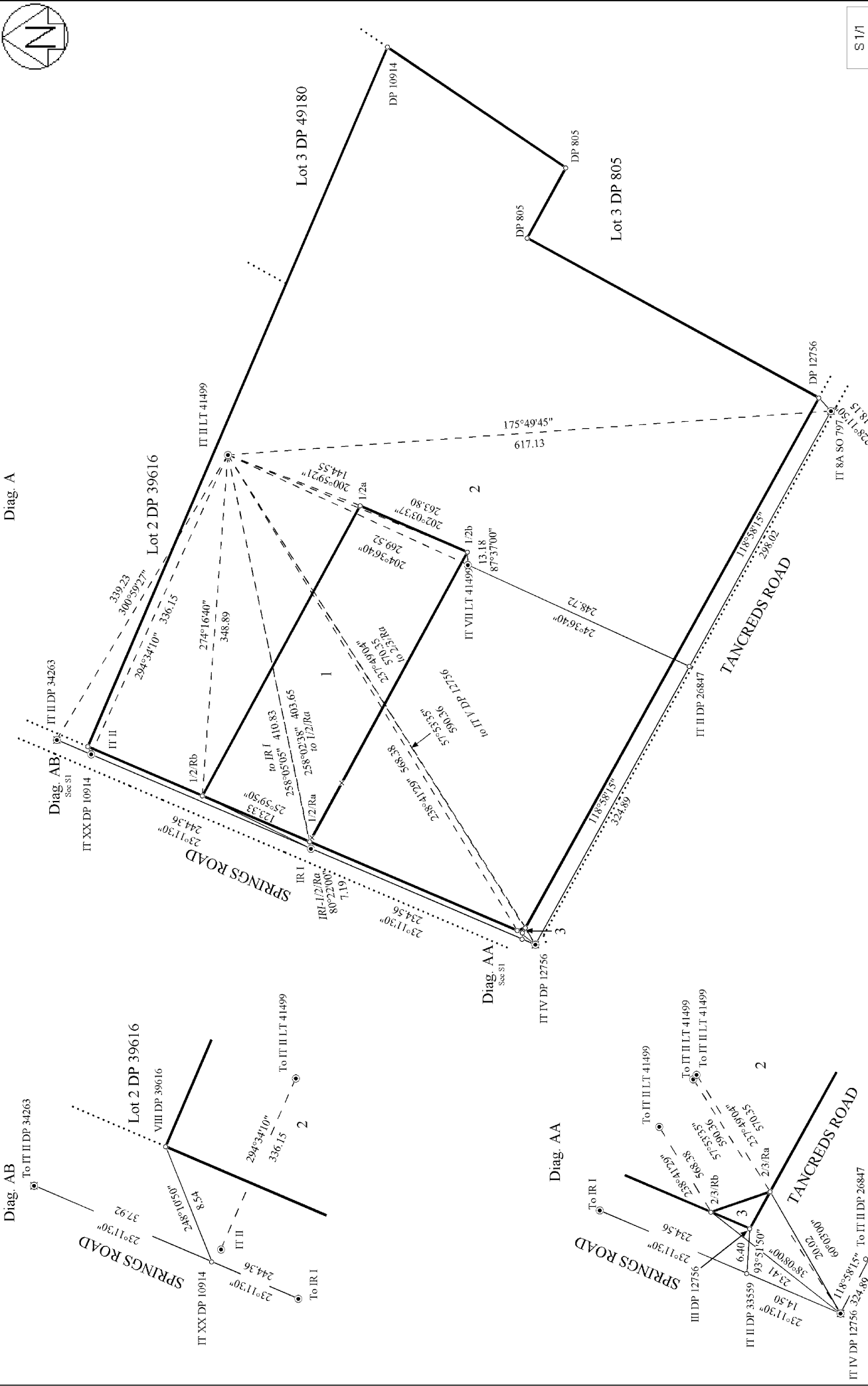
OCCUPATION DIAGRAM



OFFICE
PAGE



Diag. A



S 1/1

Digital Survey Plan
DP 344528
 Deposited on: 05/04/2005

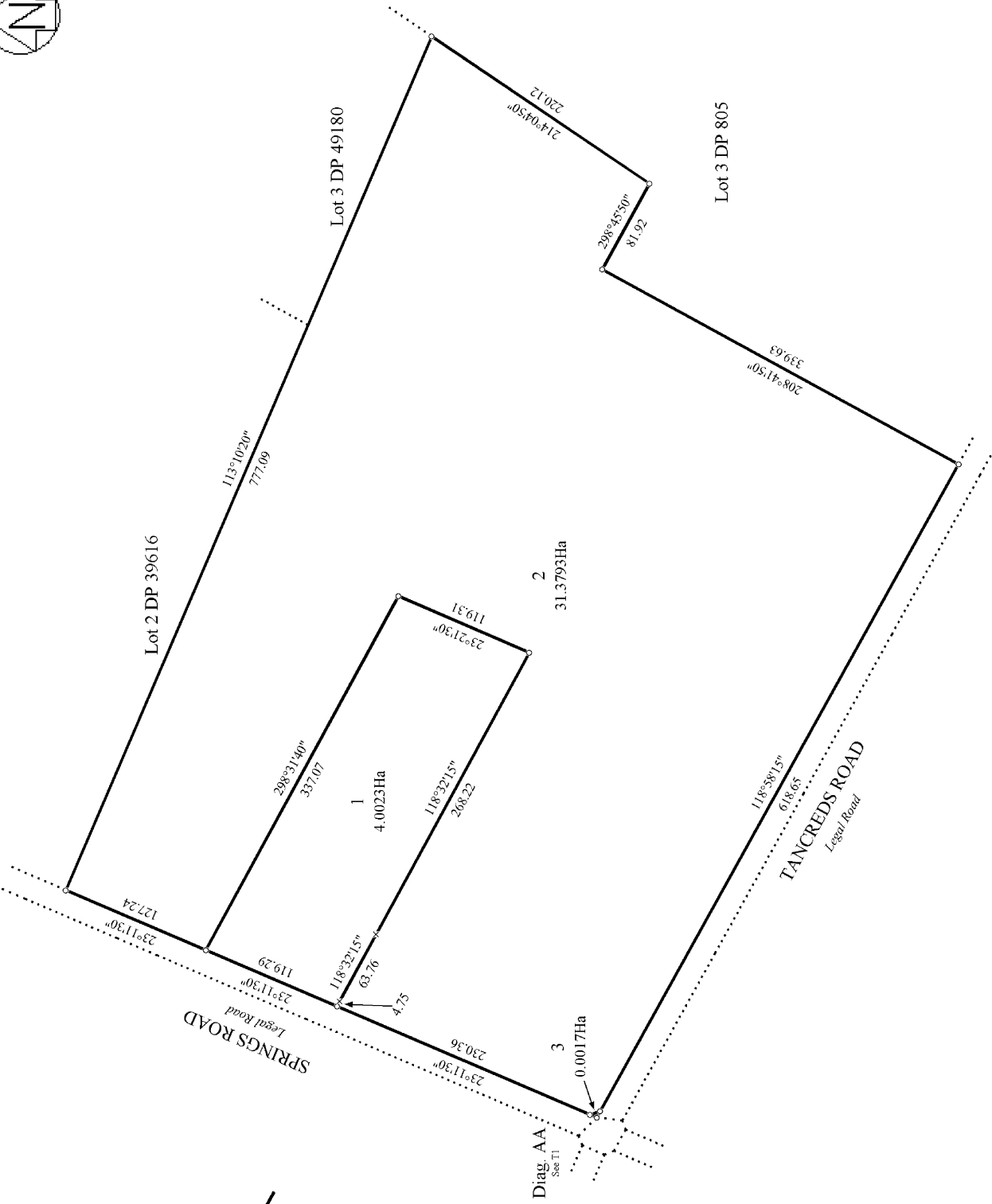
Surveyor: Jeremy Marc Gutsell
 Firm: Glasson Potts Fowler Ltd
 Survey Date: 22/10/2004

Lots 1 - 3 being subdivision of Lot 1 DP40474

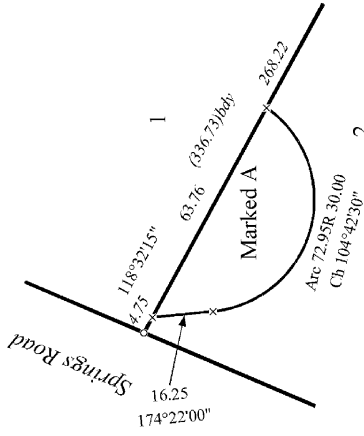
Land District: Canterbury
 Digitally Generated Plan
 Generated on: 05/04/2005 09:42am Page 7 of 8



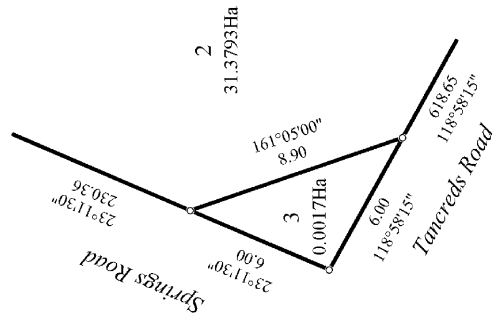
Diag. A



Diag. B
 Non Primary



Diag. AA



T 1/1

Land District: Canterbury

Digitally Generated Plan
 Generated on: 05/04/2005 09:42am Page 8 of 8

Lots 1 - 3 being subdivision of Lot 1 DP40474

Surveyor: Jeremy Marc Gutsell
 Firm: Glasson Potts Fowler Ltd
 Survey Date: 22/10/2004

Digital Survey Plan
 DP 344528

Deposited on: 05/04/2005