



# Digital Survey Plan - DP 356073

---

**Survey Number** DP 356073  
**Surveyor Reference** 5229 MOE  
**Surveyor** Lloyd Robert McGarvey  
**Survey Firm** Cowan & Holmes  
**Surveyor Declaration** I Lloyd Robert McGarvey, being a person entitled to practise as a licensed cadastral surveyor, certify that -  
(a) The surveys to which this dataset relates are accurate, and were undertaken by me or under my direction in accordance with the Cadastral Survey Act 2002 and the Surveyor-General's Rules for Cadastral Survey 2002/2;  
(b) This dataset is accurate, and has been created in accordance with that Act and those Rules.  
Declared on 12/09/2005.

---

## Survey Details

**Dataset Description** Easements over Sections 272, 278 - 282 Town of Ahaura, Section 1 SO 12100, and Sections 1 and 2 SO 351389

<b>Purpose</b>	Easement	<b>Type</b>	Computed
<b>Status</b>	Deposited	<b>Survey Class</b>	Class 1 Cadastral Survey
<b>Land District</b>	Westland		
<b>Coordinate System</b>	Grey 1949		

---

## Survey Dates

<b>Surveyed Date</b>	05/07/2005	<b>Certified Date</b>	12/09/2005
<b>Submitted Date</b>	12/09/2005 09:43:35	<b>Survey Approval Date</b>	12/09/2005
<b>Deposit Date</b>	18/08/2006		

---

## Referenced Surveys

Survey Number	Land District	Bearing Correction
SO 8823	Westland	0°00'00"
SO 351389	Westland	0°00'00"
SO 11906	Westland	0°00'00"
SO 12100	Westland	0°00'00"
SO 4858	Westland	0°00'00"
DP 2150	Westland	0°00'00"
SO 7823	Westland	0°00'00"
SO 8953	Westland	0°00'00"

---

## Territorial Authorities

Grey District

---

## Comprised In

CT WS2C/1458  
CT WS8A/74  
CT 229223



# Digital Survey Plan - DP 356073

---

## Created Parcels

Parcels	Parcel Intent	Area	CT Reference
Easement A Deposited Plan 356073	Easement		
Easement B Deposited Plan 356073	Easement		
Easement C Deposited Plan 356073	Easement		
Easement D Deposited Plan 356073	Easement		
Easement E Deposited Plan 356073	Easement		
Easement F Deposited Plan 356073	Easement		
Easement G Deposited Plan 356073	Easement		
Easement H Deposited Plan 356073	Easement		
Easement I Deposited Plan 356073	Easement		
<b>Total Area</b>		<hr/> 0.0000 ha	



# Mark and Observation

Survey Number DP 356073

Coordinate System Grey 1949

From	To	Code	Bearing	Adpt Surv	Distance	Adpt Surv
PEG DP 2150	PEG 29 SO 351389	ob4	285°04'00"	A SO 11906	20.12	A SO 11906
PEG DP 2150	PEG 11 SO 351389	ob5	105°02'30"	A SO 351389	25.88	A SO 351389
PEG 11 SO 351389	PEG 16 SO 351389	ob6	159°42'00"	A SO 351389	24.68	A SO 351389
PEG 16 SO 351389	PEG 12 SO 351389	ob7	105°04'00"	A SO 8823	20.15	A SO 351389
PEG 12 SO 351389	PEG 13 SO 351389	ob8	195°11'00"	A SO 351389	20.11	A SO 351389
PEG 13 SO 351389	PEG 14 SO 351389	ob9	105°06'00"	A SO 351389	10.10	A SO 351389
PEG 14 SO 351389	PEG 19 SO 351389	ob10	105°04'00"	A SO 8823	30.18	A SO 8823
PEG VII SO 11906	PEG 29 SO 351389	ob0	105°04'00"	A SO 11906	75.44	A SO 11906
PEG VII SO 11906	UNMK SO 7823	ob1	105°04'00"	A SO 7823	10.06	A SO 7823
UNMK SO 7823	UNMK SO 7823	ob12	105°04'00"	A SO 7823	10.06	A SO 7823
UNMK SO 7823	UNMK SO 7823	ob14	105°04'00"	A SO 7823	10.06	A SO 7823
UNMK SO 7823	UNMK SO 7823	ob16	105°04'00"	A SO 7823	10.06	A SO 7823
UNMK SO 7823	UNMK SO 7823	ob18	105°04'00"	A SO 7823	10.06	A SO 7823
UNMK SO 7823	PEG 29 SO 351389	ob20	105°04'00"	A SO 7823	25.15	A SO 7823
PEG VII SO 11906	UNMK 1 DP 356073	ob2	15°04'00"	A SO 7823	2.00	C
UNMK 1 DP 356073	UNMK 2 DP 356073	ob22	105°04'00"	C	10.06	C
UNMK 2 DP 356073	UNMK 3 DP 356073	ob24	105°04'00"	C	10.06	C
UNMK 3 DP 356073	UNMK 4 DP 356073	ob26	105°04'00"	C	10.06	C
UNMK 4 DP 356073	UNMK 5 DP 356073	ob28	105°04'00"	C	10.06	C
UNMK 5 DP 356073	UNMK 6 DP 356073	ob30	105°04'00"	C	10.06	C
UNMK 6 DP 356073	UNMK 7 DP 356073	ob33	105°04'00"	C	25.15	C
UNMK 7 DP 356073	PEG 29 SO 351389	ob36	195°04'00"	C	2.00	C
UNMK 7 DP 356073	PEG DP 2150	ob37	110°45'00"	C	20.22	C
PEG 29 SO 351389	UNMK 8 DP 356073	ob3	110°45'00"	C	20.12	C
UNMK 8 DP 356073	UNMK 9 DP 356073	ob21	105°02'30"	C	24.94	C
UNMK 9 DP 356073	UNMK 10 DP 356073	ob39	159°42'00"	C	22.23	C
UNMK 10 DP 356073	PEG 16 SO 351389	ob41	105°04'00"	C	2.45	C
UNMK 10 DP 356073	UNMK 11 DP 356073	ob42	159°42'00"	C	2.45	C
UNMK 11 DP 356073	UNMK 12 DP 356073	ob43	105°04'00"	C	19.18	C
UNMK 12 DP 356073	UNMK 13 DP 356073	ob44	195°11'00"	C	20.11	C
UNMK 13 DP 356073	UNMK 14 DP 356073	ob45	105°06'00"	C	12.10	C
UNMK 14 DP 356073	UNMK 15 DP 356073	ob46	105°04'00"	C	30.18	C
UNMK 15 DP 356073	PEG 19 SO 351389	ob48	15°04'00"	C	2.00	C
UNMK 1 DP 356073	UNMK SO 7823	ob23	15°04'00"	A SO 7823	28.18	C
UNMK 2 DP 356073	UNMK SO 7823	ob25	15°04'00"	A SO 7823	28.18	C
UNMK 3 DP 356073	UNMK SO 7823	ob27	15°04'00"	A SO 7823	28.18	C
UNMK 4 DP 356073	UNMK SO 7823	ob29	15°04'00"	A SO 7823	28.18	C
UNMK 5 DP 356073	UNMK SO 7823	ob31	15°04'00"	A SO 7823	28.18	C
UNMK 6 DP 356073	UNMK SO 7823	ob34	15°04'00"	A SO 7823	8.06	C
UNMK 7 DP 356073	UNMK SO 7823	ob38	15°04'00"	A SO 7823	8.06	C
UNMK 10 DP 356073	PEG SO 8823	ob40	285°04'00"	A SO 8823	27.69	C
UNMK 15 DP 356073	PEG 18 SO 351389	ob47	195°04'00"	A SO 8823	8.06	C
UNMK SO 7823	UNMK 2 DP 356073	ob11	15°04'00"	A SO 7823	2.00	C



# Mark and Observation

**Survey Number** DP 356073

**Coordinate System** Grey 1949

From	To	Code	Bearing	Adpt Surv	Distance	Adpt Surv
UNMK SO 7823	UNMK 3 DP 356073	ob13	15°04'00"	A SO 7823	2.00	C
UNMK SO 7823	UNMK 4 DP 356073	ob15	15°04'00"	A SO 7823	2.00	C
UNMK SO 7823	UNMK 5 DP 356073	ob17	15°04'00"	A SO 7823	2.00	C
UNMK SO 7823	UNMK 6 DP 356073	ob19	15°04'00"	A SO 7823	2.00	C
UNMK 6 DP 356073	UNMK SO 7823	ob32	15°04'00"	A SO 7823	28.18	C
UNMK 7 DP 356073	PEG V SO 11906	ob35	15°04'00"	A SO 7823	58.35	C

Mark Name	Description
UNMK SO 7823	

\*\*\* End of Report \*\*\*

# Schedule / Memorandum

Land Registration District

**WESTLAND**

Plan Number

**LT 356073**

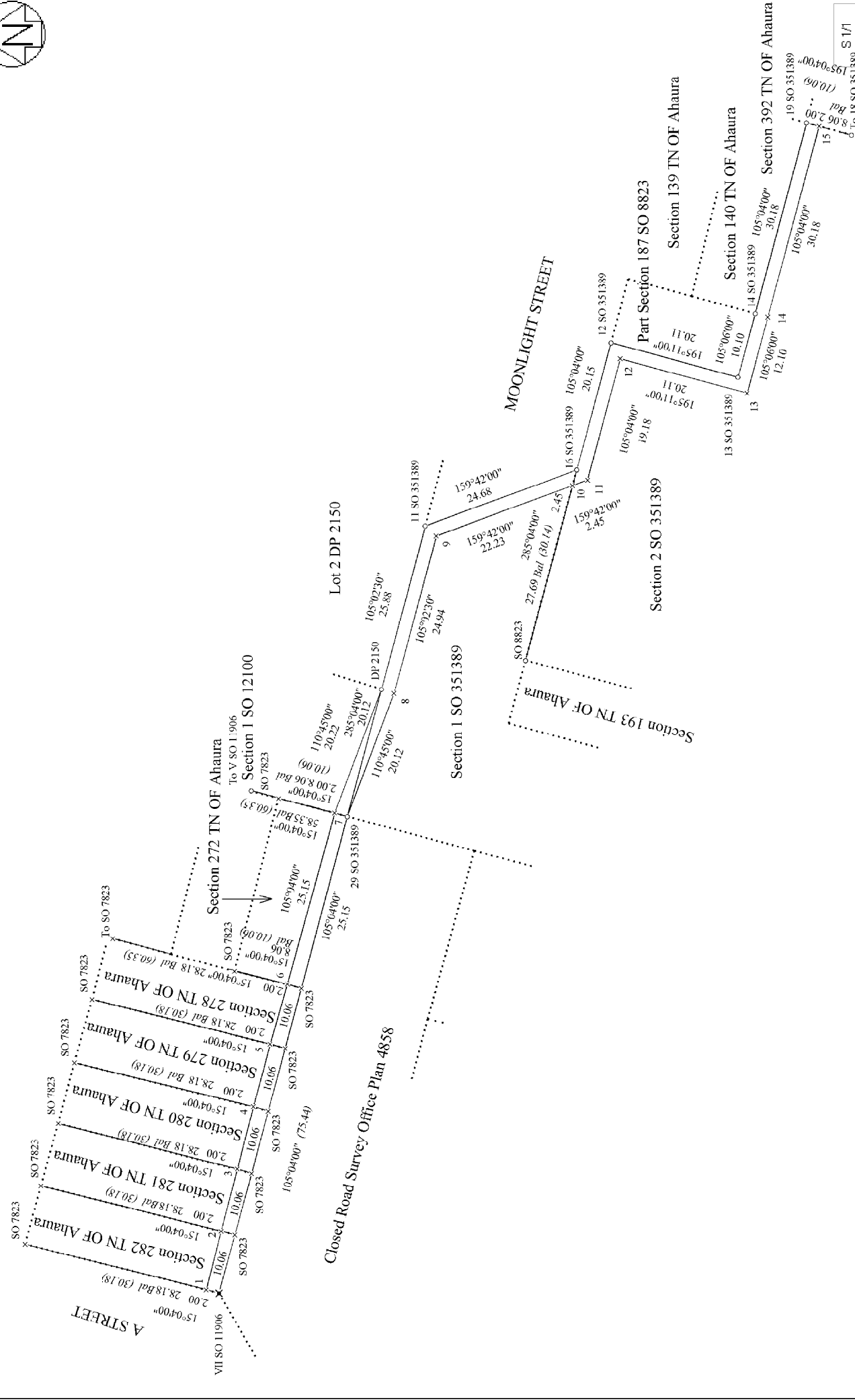
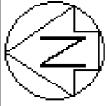
Territorial Authority (the Council)

**GREY DISTRICT COUNCIL**

## Proposed Easements

Purpose	Shown	Servient Tenement	Dominant Tenement
Right to Convey Water	A	Section 282 Town of Ahaura	Part Section 187 Town of Ahaura  Section 139 Town of Ahaura  Section 140 Town of Ahaura  Section 392 Town of Ahaura
	B	Section 281 Town of Ahaura	
	C	Section 280 Town of Ahaura	
	D	Section 279 Town of Ahaura	
	E	Section 278 Town of Ahaura	
	F	Section 272 Town of Ahaura	
	G	Section 1 SO 12100	
	H	Section 1 SO 351389	
	I	Section 2 SO 351389	

Diag. A



<p>Lend District: Westland  <b>Dataset Type: Computed</b>          Digitally Generated Plan          Generated on: 08/09/2006 09:43am Page 6 of 7</p>	<p><b>Easements over Sections 272, 278 - 282 Town of Ahaura, Section 1 SO 12100, and Sections 1 and 2 SO 351389</b></p>	<p>Surveyor: Lloyd Robert McGarvey          Firm: Cowan &amp; Holmes          Survey Date: 05/07/2005</p>	<p><b>Digital Survey Plan</b>  <b>DP 356073</b>          Deposited on: 18/08/2006</p>
---	---	---	---

