



Digital Survey Plan - DP 361512

Survey Number	DP 361512
Surveyor Reference	05080
Surveyor	Belinda Leigh Willis
Survey Firm	Belinda Willis & Partners Limited (Oakura)
Surveyor Declaration	I Belinda Leigh Willis, being a person entitled to practise as a licensed cadastral surveyor, certify that - (a) The surveys to which this dataset relates are accurate, and were undertaken by me or under my direction in accordance with the Cadastral Survey Act 2002 and the Surveyor-General's Rules for Cadastral Survey 2002/2; (b) This dataset is accurate, and has been created in accordance with that Act and those Rules. Declared on 10/01/2006.

Survey Details

Dataset Description	Lots 1 and 2 Being Subdivision of Lot 1 DP 12925		
Purpose	LT Subdivision		
Status	Deposited	Type	Survey
Land District	Taranaki	Survey Class	Class III Cadastral Survey
Coordinate System	Taranaki 1949		

Survey Dates

Surveyed Date	15/12/2005	Certified Date	10/01/2006
Submitted Date	10/01/2006 13:25:42	Survey Approval Date	11/01/2006
Deposit Date	01/02/2006		

Referenced Surveys

Survey Number	Land District	Bearing Correction
DP 12925	Taranaki	0°00'00"
ML 1486	Taranaki	0°00'00"
SO 10122	Taranaki	0°00'00"
SO 11207	Taranaki	0°00'00"

Territorial Authorities

South Taranaki District

Comprised In

CT TNF2/124

Created Parcels

Parcels	Parcel Intent	Area	CT Reference
Lot 1 Deposited Plan 361512	Fee Simple Title	21.6677 ha	250385
Lot 2 Deposited Plan 361512	Fee Simple Title	80.0736 ha	250386
Marked I-J-K Deposited Plan 361512	Easement		
Total Area		101.7413 ha	



Mark and Observation

Survey Number DP 361512
Coordinate System Taranaki 1949

From	To	Code	Bearing	Adpt Surv	Distance	Adpt Surv
J (Opunake SD)	11881	ob0	312°25'17"	M	4,135.75	A SO 10122
11881	IT SO 11207	ob1	122°32'30"	M	305.13	M
IT SO 11207	IT I DP 12925	ob2	59°46'23"	M	451.73	M
IT SO 11207	IT 2 DP 361512	ob3	345°41'00"	M	91.78	M
IT 2 DP 361512	IT 3 DP 361512	ob6	314°26'00"	M	197.41	M
IT 3 DP 361512	IT 4 DP 361512	ob11	333°00'00"	M	569.44	M
IT 4 DP 361512	11881	ob14	163°52'20"	M	593.68	M
IT 4 DP 361512	IT II DP 12925	ob15	63°10'00"	M	585.27	M
IT II DP 12925	IT I DP 12925	ob23	159°22'40"	A DP 12925	824.07	A DP 12925
IT SO 11207	IT 1 DP 361512	ob4	68°37'30"	M	312.99	M
IT 1 DP 361512	IT I DP 12925	ob24	41°05'40"	M	150.36	M
IT SO 11207	PEG N DP 361512	ob5	248°05'00"	M	14.77	M
PEG N DP 361512	NAIL A DP 361512	ob26	58°33'00"	A DP 12925	334.83	C
NAIL A DP 361512	PEG ML 1486	ob27	58°33'00"	A DP 12925	204.62	C
PEG ML 1486	PEG SO 350	ob29	339°06'10"	A ML 1486	10.06	A ML 1486
PEG SO 350	IT IV ML 1486	ob31	0°21'00"	A ML 1486	38.14	A ML 1486
IT IV ML 1486	IT III ML 1486	ob32	78°44'30"	A SO 11207	173.56	A SO 11207
IT III ML 1486	IT I DP 12925	ob33	239°46'23"	A DP 12925	258.09	A DP 12925
PEG ML 1486	PEG DP 12925	ob30	339°06'10"	A DP 12925	1,008.24	A DP 12925
PEG DP 12925	IR XII DP 12925	ob34	295°34'40"	A DP 12925	14.80	A DP 12925
IR XII DP 12925	IT II DP 12925	ob35	173°17'20"	A DP 12925	227.15	A DP 12925
IT 4 DP 361512	PEG IV SO 11207	ob16	269°13'40"	M	312.28	M
PEG IV SO 11207	PEG V SO 11207	ob36	338°29'10"	A DP 12925	326.74	A DP 12925
UNMKD K DP 13976	PEG W DP 355076	ob65	341°54'20"	A DP 12925	28.73	A DP 13976
PEG W DP 355076	UNMKD I DP 13976	ob39	69°50'20"	A DP 12925	44.02	A DP 13976
PEG DP 12925	POST DP 12925	ob40	158°08'20"	A DP 12925	283.04	A DP 12925
POST DP 12925	POST DP 12925	ob41	69°57'00"	A DP 12925	3.82	A DP 12925
POST DP 12925	POST DP 12925	ob42	97°28'30"	A DP 12925	85.48	A DP 12925
POST DP 12925	POST DP 12925	ob43	71°02'40"	A DP 12925	78.90	A DP 12925
POST DP 12925	POST DP 12925	ob44	65°23'30"	A DP 12925	85.62	A DP 12925
POST DP 12925	POST DP 12925	ob45	56°57'20"	A DP 12925	77.92	A DP 12925
POST DP 12925	PEG DP 12925	ob46	69°48'40"	A DP 12925	92.07	A DP 12925
PEG IV SO 11207	PEG III SO 11207	ob37	147°05'15"	A DP 12925	217.69	A DP 12925
PEG III SO 11207	PEG II SO 11207	ob47	121°52'30"	A DP 12925	274.04	A DP 12925
PEG II SO 11207	PEG SO 11207	ob48	150°20'50"	A DP 12925	42.03	A DP 12925
PEG SO 11207	PEG I SO 11207	ob49	183°28'30"	A DP 12925	169.23	A DP 12925
PEG I SO 11207	PEG N DP 361512	ob50	119°26'30"	A DP 12925	412.47	A DP 12925
IT 1 DP 361512	NAIL A DP 361512	ob25	340°27'00"	M	58.46	M
IT 2 DP 361512	POST B DP 361512	ob7	309°13'00"	M	72.52	M
IT 2 DP 361512	POST C DP 361512	ob8	310°21'00"	M	78.47	M
IT 2 DP 361512	POST D DP 361512	ob9	32°04'00"	M	146.12	M
IT 2 DP 361512	POST E DP 361512	ob10	31°31'00"	M	222.06	M
IT 3 DP 361512	POST F DP 361512	ob12	142°37'00"	M	15.94	M



Mark and Observation

Survey Number DP 361512
Coordinate System Taranaki 1949

From	To	Code	Bearing	Adpt Surv	Distance	Adpt Surv
IT 3 DP 361512	POST G DP 361512	ob13	318°44'00"	M	23.65	M
IT 4 DP 361512	POST H DP 361512	ob17	150°47'40"	M	236.43	M
IT 4 DP 361512	POST I DP 361512	ob18	342°05'00"	M	119.34	M
IT 4 DP 361512	POST J DP 361512	ob19	319°15'00"	M	126.39	M
IT 4 DP 361512	POST K DP 361512	ob20	302°19'00"	M	158.71	M
IT 4 DP 361512	POST L DP 361512	ob21	294°05'00"	M	183.40	M
IT 4 DP 361512	POST M DP 361512	ob22	290°59'00"	M	201.05	M
NAIL A DP 361512	POST E DP 361512	ob28	301°25'00"	C	209.22	C
POST E DP 361512	POST D DP 361512	ob54	210°27'30"	C	75.96	C
POST D DP 361512	POST B DP 361512	ob53	239°45'40"	C	154.83	C
POST B DP 361512	POST C DP 361512	ob51	323°52'00"	C	6.13	C
POST C DP 361512	POST F DP 361512	ob52	316°16'20"	C	103.41	C
POST F DP 361512	POST G DP 361512	ob55	320°18'00"	C	39.57	C
POST G DP 361512	POST H DP 361512	ob56	335°45'10"	C	310.60	C
POST H DP 361512	POST I DP 361512	ob57	334°34'30"	C	354.23	C
POST I DP 361512	POST J DP 361512	ob58	248°45'00"	C	49.13	C
POST J DP 361512	POST K DP 361512	ob59	258°04'30"	C	52.76	C
POST K DP 361512	POST L DP 361512	ob60	253°17'00"	C	34.78	C
POST L DP 361512	POST M DP 361512	ob61	262°01'00"	C	20.48	C
POST M DP 361512	PEG IV SO 11207	ob62	238°32'00"	C	146.00	C
UNMKD I DP 13976	PEG DP 12925	ob63	69°50'20"	A DP 12925	477.18	A DP 13976
PEG V SO 11207	UNMKD K DP 13976	ob38	341°54'20"	A DP 12925	119.62	A DP 13976
UNMKD I DP 13976	UNMKD J DP 13976	ob64	182°48'00"	A DP 13976	4.32	A DP 13976
UNMKD J DP 13976	UNMKD K DP 13976	ob66	220°08'30"	A DP 13976	49.94	A DP 13976

Mark Name	Description
J (Opunake SD)	ss pin in trig tube set in conc 0.1m above gd
PEG N DP 361512	in position peg SO 11207

*** End of Report ***

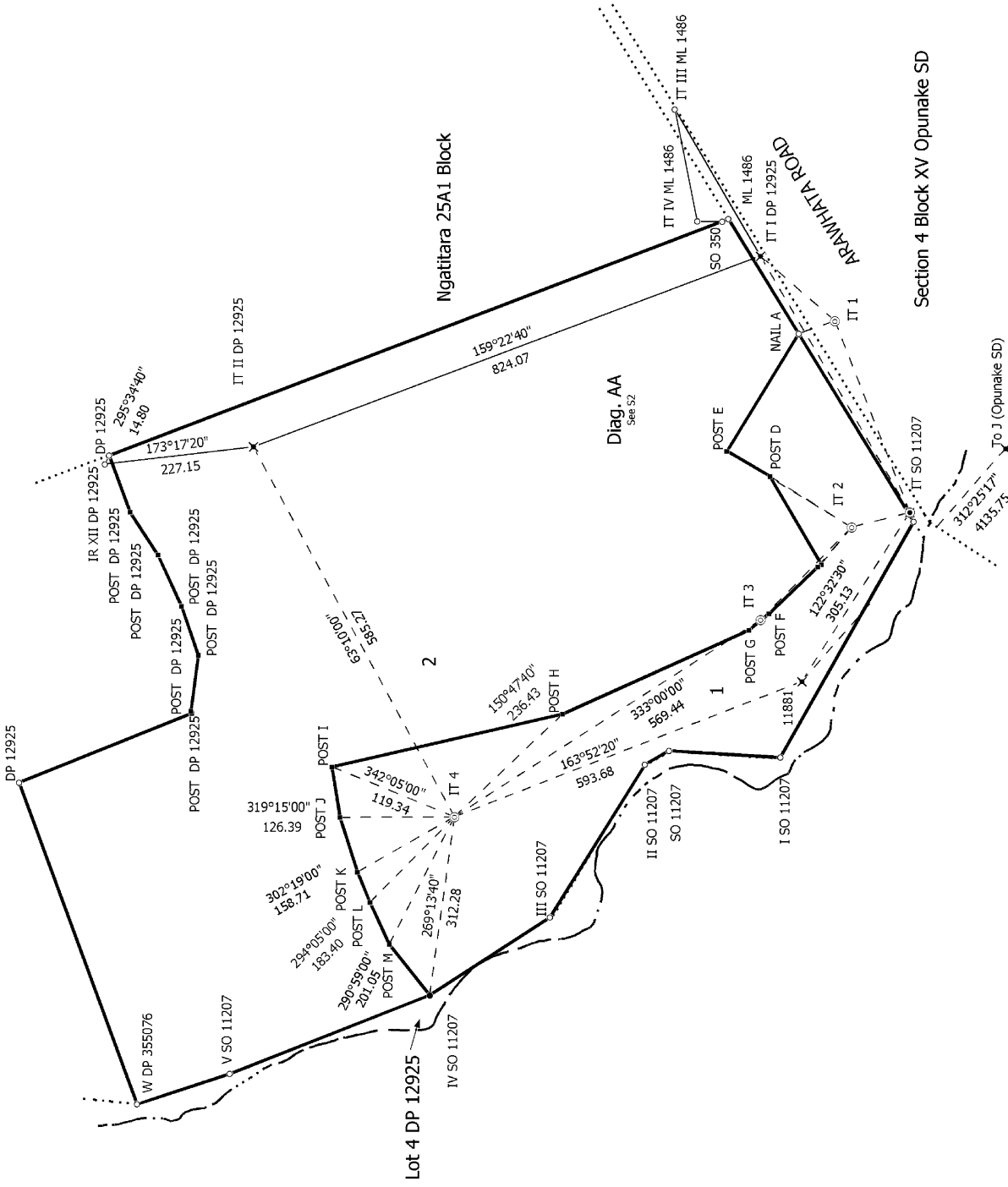
Schedule of Existing Easement in Gross

Purpose	Shown	Servient Tenement	Document No.
Electricity	I-J-K	Lot 2 hereon	Transfer 301853



Diag. A

Part Lot 2 DP 12925



S 1/2

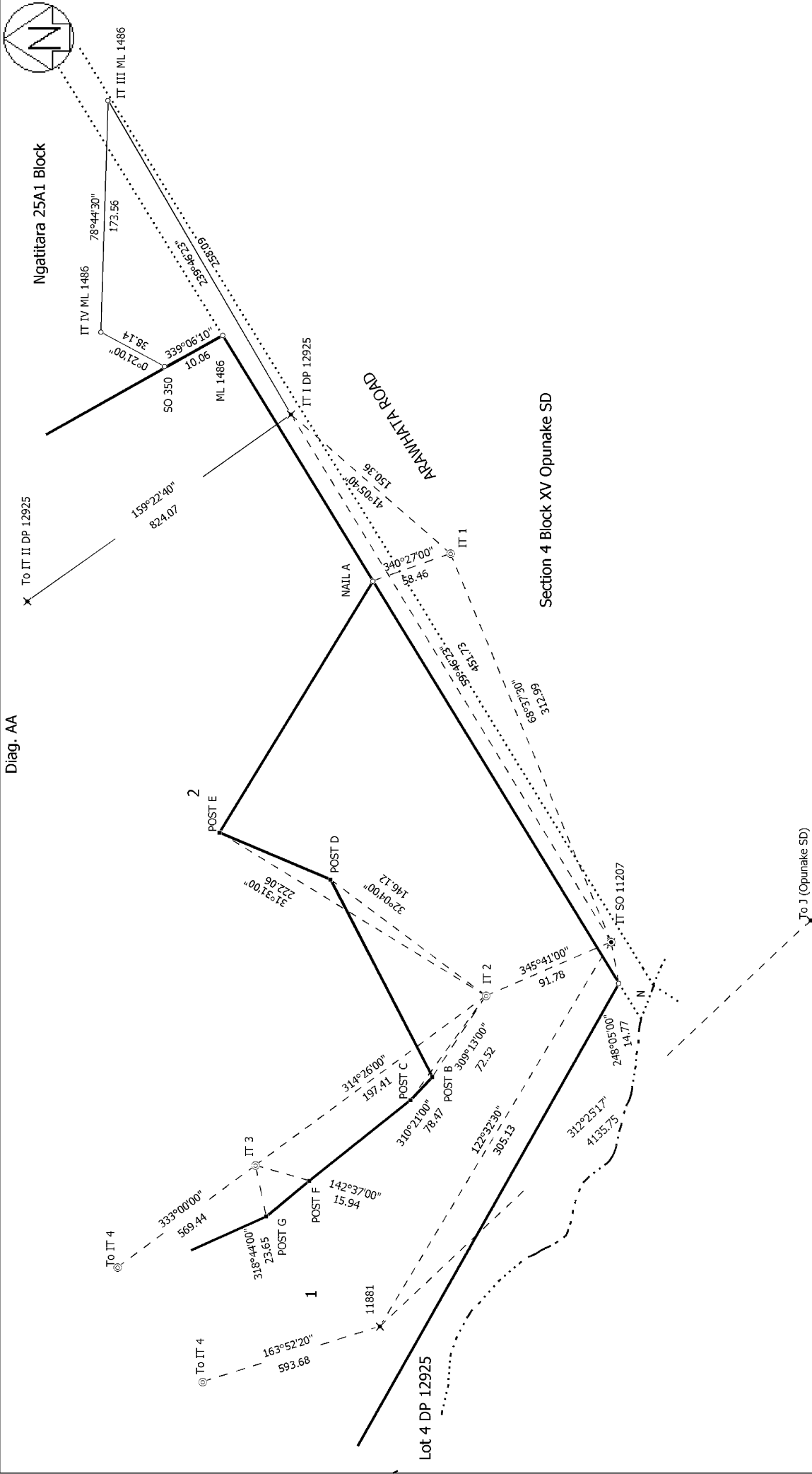
Lots 1 and 2 Being Subdivision of Lot 1 DP 12925

Surveyor: Belinda Leigh Willis
 Firm: Belinda Willis & Partners Limited (Oa)
 Survey Date: 15/12/2005

Digital Survey Plan
 DP 361512

Deposited on: 01/02/2006

Diag. AA



S 2/2

Lots 1 and 2 Being Subdivision of Lot 1 DP 12925

Surveyor: Belinda Leigh Willis
 Firm: Belinda Willis & Partners Limited (Oa)
 Survey Date: 15/12/2005

Digital Survey Plan
 DP 361512

Deposited on: 01/02/2006

Land District: Taranaki

Digitally Generated Plan
 Generated on: 20/02/2006 2:00pm Page 8 of 9

