



Digital Survey Plan - DP 347994

Survey Number DP 347994
Surveyor Reference 04504
Surveyor Belinda Leigh Willis
Survey Firm BTW Surveyors Ltd
Surveyor Declaration I Belinda Leigh Willis, being a person entitled to practise as a licensed cadastral surveyor, certify that -
 (a) The surveys to which this dataset relates are accurate, and were undertaken by me or under my direction in accordance with the Cadastral Survey Act 2002 and the Surveyor-General's Rules for Cadastral Survey 2002/2;
 (b) This dataset is accurate, and has been created in accordance with that Act and those Rules.
 Declared on 02/06/2005.

Survey Details

Dataset Description Lots 1 and 2 being a subdivision of Pt Lot 2 DP 5870
Purpose LT Subdivision
Status Deposited **Type** Survey
Land District Taranaki **Survey Class** Class I Cadastral Survey
Coordinate System Taranaki 2000

Survey Dates

Surveyed Date 20/01/2005 **Certified Date** 02/06/2005
Submitted Date 02/06/2005 16:22:52 **Survey Approval Date** 07/06/2005
Deposit Date 23/06/2005

Referenced Surveys

Survey Number	Land District	Bearing Correction
DP 11819	Taranaki	0°00'00"
DP 13274	Taranaki	0°00'00"
DP 14882	Taranaki	0°00'00"
DP 15092	Taranaki	0°00'00"
DP 19177	Taranaki	0°00'00"
SO 10754	Taranaki	0°00'00"
DP 5870	Taranaki	0°00'00"
SO 10404	Taranaki	0°00'00"
SO 11272	Taranaki	0°00'00"
SO 11809	Taranaki	0°00'00"
SO 12407	Taranaki	0°00'00"
SO 8694	Taranaki	0°00'00"
DP 10892	Taranaki	0°00'00"
DP 6577	Taranaki	0°00'00"
DP 17966	Taranaki	0°00'00"

Territorial Authorities

New Plymouth District



Digital Survey Plan - DP 347994

Comprised In

CT TN162/114

Created Parcels

Parcels	Parcel Intent	Area	CT Reference
Lot 2 Deposited Plan 347994	Fee Simple Title	22.3676 ha	196894
Lot 1 Deposited Plan 347994	Fee Simple Title	0.2118 ha	196893
Marked a - b - c Deposited Plan 347994	Easement		
Marked C Deposited Plan 347994	Easement		
Marked D Deposited Plan 347994	Easement		
Marked E Deposited Plan 347994	Easement		
Marked F Deposited Plan 347994	Easement		
Marked A Deposited Plan 347994	Easement		
Marked c - d Deposited Plan 347994	Easement		
Marked B Deposited Plan 347994	Easement		
Total Area		<hr/> 22.5794 ha	



Mark and Observation

Survey Number DP 347994
Coordinate System Taranaki 2000

From	To	Code	Bearing	Adpt Surv	Distance	Adpt Surv
IT I DP 336107	IT IB DP 336107	ob0	42°22'40"	M	74.88	M
IT IB DP 336107	IT III DP 347994	ob3	30°01'00"	M	168.20	M
IT III DP 347994	IT II DP 347994	ob4	26°38'00"	M	268.82	M
IT II DP 347994	IT III SO 11114	ob5	150°21'45"	M	73.27	M
IT III SO 11114	IB I DP 13274	ob10	237°17'10"	A DP 13274	100.21	A DP 13274
IB I DP 13274	IS VIII A SO 8694	ob12	22°18'10"	A DP 13274	74.06	A DP 13274
IS VIII A SO 8694	IT VIII SO 8694	ob14	30°05'20"	A SO 8694	65.94	A SO 8694
IT VIII SO 8694	IT VII SO 8694	ob15	30°05'20"	A SO 8694	52.36	A SO 8694
IT VII SO 8694	RS 8 SO 7252	ob16	120°05'20"	A SO 8694	8.05	A SO 8694
RS 8 SO 7252	IS I DP 6577	ob2	317°43'40"	A DP 6577	14.10	A DP 6577
IS I DP 6577	PEG DP 6577	ob18	196°17'00"	A DP 6577	1.76	A DP 6577
PEG DP 6577	PEG 2D DP 347994	ob19	210°07'30"	A DP 6577	40.90	C
PEG 2D DP 347994	PEG DP 6577	ob20	210°07'30"	A DP 6577	157.64	C
PEG DP 6577	IS DP 5870	ob21	86°21'00"	A DP 6577	15.81	A DP 6577
IS DP 5870	RS 9 SO 7252	ob23	30°05'20"	A DP 5870	134.84	A DP 5870
PEG DP 6577	PEG SO 10404	ob22	304°26'00"	A DP 5870	33.06	A SO 10404
PEG SO 10404	PEG DP 11819	ob51	304°26'00"	A DP 5870	176.91	A DP 11819
PEG DP 11819	UNMRK SO 11809	ob52	304°26'00"	A DP 5870	78.46	A SO 11809
UNMRK SO 11809	UNMRK SO 11272	ob62	304°26'00"	A DP 5870	3.44	C
UNMRK SO 11272	UNMRK SO 10754	ob64	304°26'00"	A DP 5870	4.97	C
UNMRK SO 10754	UNMRK DP 14882	ob66	304°26'00"	A DP 5870	7.36	C
UNMRK DP 14882	UNMRK a DP 15092	ob68	304°26'00"	A DP 5870	5.90	A DP 15092
UNMRK a DP 15092	UNMRK DP 17966	ob70	304°26'00"	A DP 5870	6.59	C
PEG DP 5870	UNMRK DP 17966	ob50	34°16'30"	A DP 5870	214.68	A DP 17966
UNMRK d DP 15092	UNMRK DP 17966	ob76	34°16'30"	A DP 5870	1.44	C
PEG DP 5870	UNMRK DP 14882	ob49	26°37'30"	A DP 5870	9.23	A DP 14882
UNMRK DP 14882	UNMRK SO 10754	ob72	26°37'30"	A DP 5870	8.35	C
UNMRK SO 10754	UNMRK SO 11272	ob73	26°37'30"	A DP 5870	8.85	C
UNMRK SO 11272	UNMRK SO 11809	ob74	26°37'30"	A DP 5870	7.59	C
UNMRK SO 11809	PEG DP 10892	ob75	26°37'30"	A DP 5870	157.49	A DP 10892
PEG DP 10892	PEG DP 10892	ob48	121°37'30"	A DP 5870	129.93	A DP 10892
PEG DP 10892	PEG DP 10892	ob46	121°37'30"	A DP 5870	93.19	A DP 10892
PEG DP 10892	PEG DP 19177	ob47	121°56'00"	A DP 5870	90.04	A DP 19177
PEG DP 19177	PEG DP 5870	ob45	121°56'00"	A DP 5870	44.41	A DP 19177
PEG DP 5870	PEG DP 5870	ob44	133°31'00"	A DP 5870	198.03	A DP 5870
PEG DP 5870	PEG DP 5870	ob61	215°14'00"	A DP 5870	167.35	A DP 5870
PEG DP 5870	PEG DP 5870	ob60	315°13'00"	A DP 5870	45.46	A DP 5870
PEG DP 5870	PEG DP 5870	ob53	220°15'00"	A DP 5870	20.30	A DP 5870
PEG DP 5870	PEG DP 6577	ob54	316°41'40"	A DP 6577	6.45	A DP 6577
PEG DP 6577	PEG DP 6577	ob55	237°13'00"	A DP 6577	19.97	A DP 6577
PEG DP 6577	PEG DP 6577	ob56	179°16'00"	A DP 6577	10.63	A DP 6577
PEG DP 6577	PEG DP 6577	ob57	130°44'00"	A DP 6577	48.67	A DP 6577
PEG DP 6577	PEG DP 6577	ob59	130°44'00"	A DP 6577	1.88	A DP 6577



Mark and Observation

Survey Number DP 347994
Coordinate System Taranaki 2000

From	To	Code	Bearing	Adpt Surv	Distance	Adpt Surv
IT III SO 11114	IT I DP 347994	ob11	315°31'00"	M	172.96	M
IT I DP 347994	IT II DP 347994	ob24	125°06'00"	M	103.85	M
PEG DP 6577	PEG 1A DP 347994	ob58	225°50'00"	C	4.36	C
PEG 1A DP 347994	PEG 1B DP 347994	ob28	198°08'00"	C	40.19	C
PEG 1B DP 347994	PEG 2C DP 347994	ob29	142°47'00"	C	31.36	C
PEG 2C DP 347994	PEG 2D DP 347994	ob27	98°30'00"	C	14.60	C
IT II DP 347994	PEG 2C DP 347994	ob6	3°07'00"	M	24.57	M
IT I DP 347994	PEG 1A DP 347994	ob25	70°41'00"	M	84.60	M
UNMRK SO 11272	UNMRK SO 11272	ob65	351°58'00"	A SO 11272	0.06	A SO 11272
UNMRK SO 11272	UNMRK SO 11272	ob30	349°56'00"	A SO 11272	88.55	A SO 11272
UNMRK SO 11272	UNMRK SO 11272	ob31	350°21'10"	A SO 11272	225.91	A SO 11272
UNMRK SO 11272	UNMRK SO 11272	ob32	355°18'00"	A SO 11272	43.39	A SO 11272
UNMRK SO 11809	UNMRK SO 11809	ob63	351°06'30"	A SO 11809	2.66	A SO 11809
UNMRK SO 11809	UNMRK SO 11809	ob33	350°25'00"	A SO 11809	90.55	A SO 11809
UNMRK SO 11809	UNMRK SO 11809	ob34	350°41'00"	A SO 11809	161.75	A SO 11809
UNMRK SO 11809	UNMRK SO 11809	ob35	346°34'00"	A SO 11809	26.64	A SO 11809
UNMRK SO 11809	UNMRK SO 11809	ob36	350°16'00"	A SO 11809	30.24	A SO 11809
UNMRK SO 11809	UNMRK SO 11809	ob37	355°17'00"	A SO 11809	14.22	A SO 11809
UNMRK SO 11809	UNMRK SO 11809	ob38	1°49'00"	A SO 11809	10.14	A SO 11809
UNMRK SO 11809	UNMRK SO 11809	ob39	355°15'00"	A SO 11809	30.49	A SO 11809
UNMRK SO 10754	UNMRK SO 10754	ob67	354°04'20"	A SO 10754	1.80	A SO 10754
UNMRK SO 10754	UNMRK SO 10754	ob40	350°01'00"	A SO 10754	307.65	A SO 10754
UNMRK SO 10754	UNMRK SO 10754	ob41	355°04'20"	A SO 10754	37.85	A SO 10754
UNMRK DP 14882	UNMRK DP 14882	ob69	350°34'40"	A SO 10754	331.05	A SO 10754
UNMRK DP 14882	UNMRK DP 14882	ob42	357°33'00"	A DP 14882	4.25	A DP 14882
UNMRK a DP 15092	UNMRK b DP 15092	ob71	351°12'00"	A DP 15092	1.27	A DP 15092
UNMRK b DP 15092	UNMRK c DP 347994	ob43	350°09'30"	A DP 15092	189.49	C
IT I DP 336107	IR I DP 11819	ob1	301°09'30"	M	202.70	M
IT II DP 347994	PEG 2D DP 347994	ob7	35°11'30"	M	27.38	M
IT I DP 347994	PEG 1B DP 347994	ob26	98°37'20"	M	68.10	M
RS 9 SO 7252	RS 8 SO 7252	ob17	30°05'20"	A DP 5870	52.36	A DP 5870
IB I DP 13274	IT SO 7252	ob13	210°26'40"	A DP 13274	316.91	A DP 13274
IT SO 7252	IT 1B DP 336107	ob77	38°21'00"	A SO 7252	6.50	A SO 7252
UNMRK DP 17966	PEG DP 5870	ob80	304°26'00"	A DP 5870	201.52	C
UNMRK DP 17966	UNMRK DP 17966	ob78	304°26'00"	A DP 5870	16.08	C
UNMRK DP 17966	UNMRK d DP 15092	ob82	34°16'30"	A DP 5870	15.93	C
UNMRK DP 17966	PEG DP 5870	ob83	34°16'30"	A DP 5870	0.90	A DP 17966
UNMRK DP 17966	UNMRK DP 17966	ob79	352°43'00"	A DP 17966	89.73	A DP 17966
UNMRK DP 17966	UNMRK c DP 347994	ob84	350°35'20"	A DP 17966	96.46	C
UNMRK DP 17966	UNMRK DP 17966	ob81	352°43'00"	A DP 17966	78.81	A DP 17966
UNMRK DP 17966	UNMRK DP 17966	ob85	350°35'20"	A DP 17966	216.05	A DP 17966
UNMRK c DP 347994	UNMRK d DP 15092	ob86	350°09'30"	A DP 15092	131.34	C
UNMRK c DP 347994	UNMRK DP 17966	ob87	350°35'20"	A DP 17966	132.37	C



Mark and Observation

Survey Number DP 347994

Coordinate System Taranaki 2000

From	To	Code	Bearing	Adpt Surv	Distance	Adpt Surv
IT III SO 11114	PARITUTU NO 2	ob8	355°32'02" M		2,776.629	A SO 11114
IT III SO 11114	XXVIII BURTON	ob9	163°16'49" M		3,430.296	A SO 11114

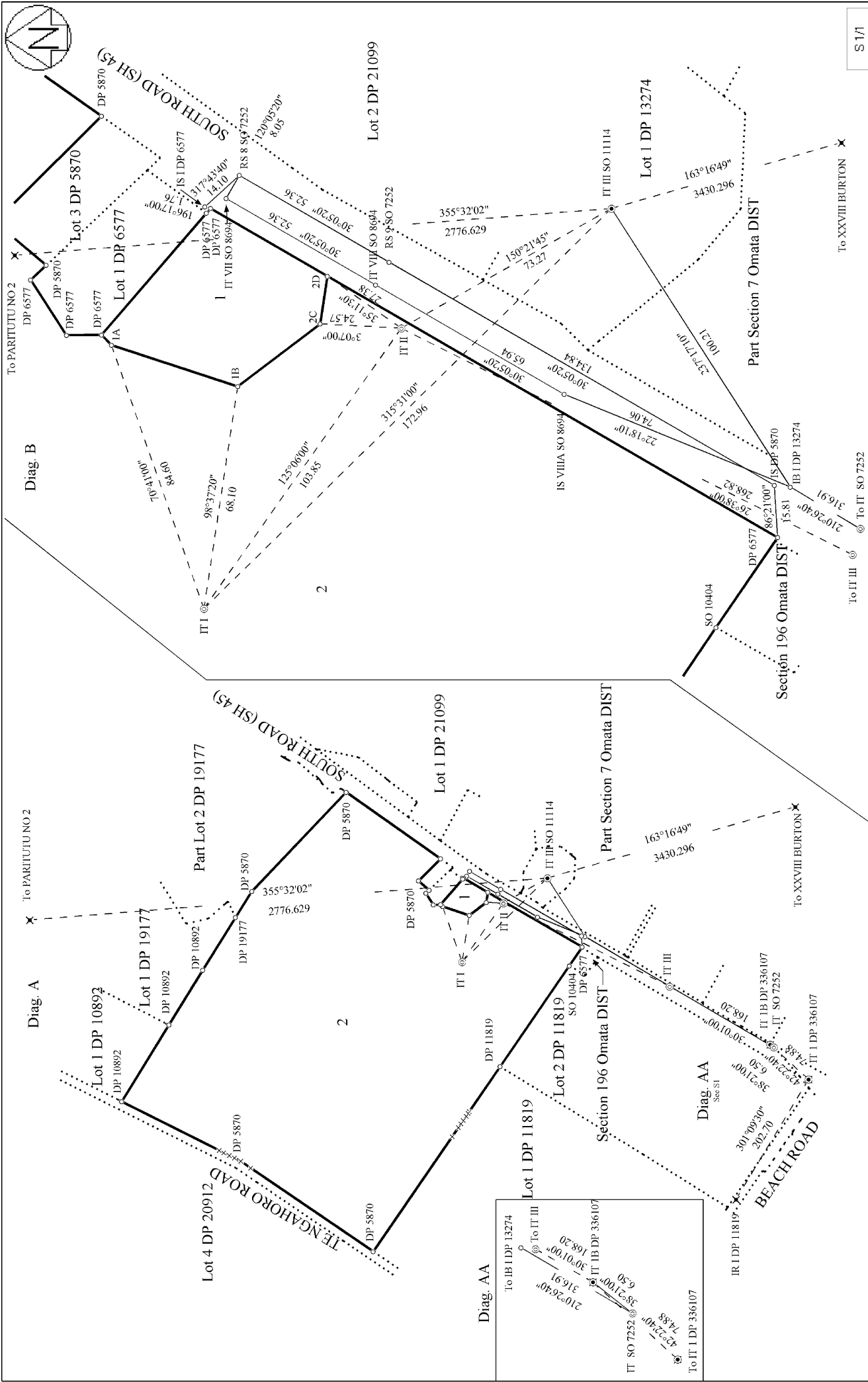
*** End of Report ***

SCHEDULE OF EXISTING EASEMENTS

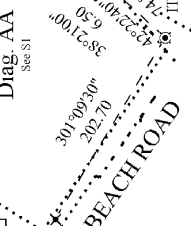
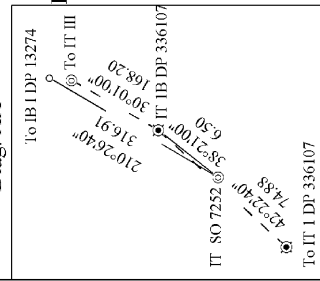
Shown	Purpose	Serv. Ten	Document
E	Condensate Pipeline	Lot 2 hereon	269138 EC
D	Pipeline	Lot 2 hereon	269164 EC
F	Methanol Pipeline	Lot 2 hereon	303427 EC
C	Pump, Move, Convey, and Transport Natural Gas products, Petroleum products, Water, other Liquids and Gases and mixtures of any of the foregoing	Lot 2 hereon	T 330528
a - b- c, c - d	Pump, Move, Convey, and Transport Natural Gas products, Petroleum products, Water, other Liquids and Gases and mixtures of any of the foregoing	Lot 2 hereon	T 337590.1
a - b- c, c - d	Pump, Move, Convey, and Transport Natural Gas products, Petroleum products, Water, other Liquids and Gases and mixtures of any of the foregoing	Lot 2 hereon	T 337590.2
A, B	Pump, Move, Convey, and Transport Natural Gas products, Petroleum products	Lot 2 hereon	T 453332.1

Other interests:

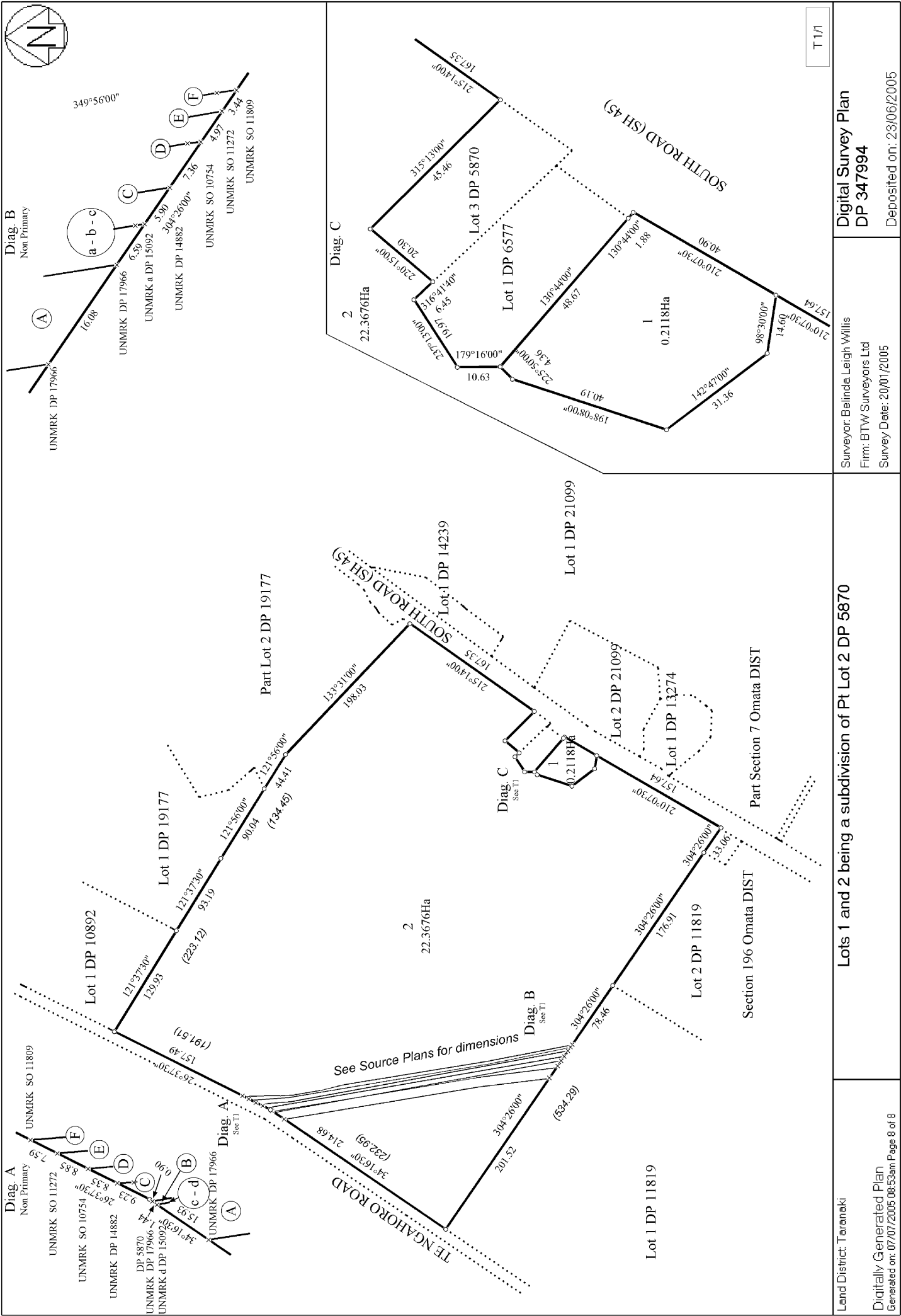
284477 Proclamation
 296768 Proclamation
 306074 Proclamation
 306075 Proclamation
 306495 Compensation Certificate



Land District: Taranaki	Lots 1 and 2 being a subdivision of Pt Lot 2 DP 5870	Surveyor: Belinda Leigh Willis Firm: BTW Surveyors Ltd Survey Date: 20/01/2005	Digital Survey Plan DP 347994 Deposited on: 23/06/2005
-------------------------	---	--	---



S 1/1



T 1/1

Digital Survey Plan
DP 347994
Deposited on: 23/06/2005

Surveyor: Belinda Leigh Willis
Firm: BTW Surveyors Ltd
Survey Date: 20/01/2005

Lots 1 and 2 being a subdivision of Pt Lot 2 DP 5870

Land District: Taranaki
Digitally Generated Plan
Generated on: 07/07/2005 08:53am Page 8 of 8