



Digital Survey Plan - DP 351176

Survey Number	DP 351176
Surveyor Reference	1696 Terry
Surveyor	Philip Thomas Conway
Survey Firm	Philip Conway Surveyor Ltd
Surveyor Declaration	I Philip Thomas Conway, being a person entitled to practise as a licensed cadastral surveyor, certify that - (a) The surveys to which this dataset relates are accurate, and were undertaken by me or under my direction in accordance with the Cadastral Survey Act 2002 and the Surveyor-General's Rules for Cadastral Survey 2002/2; (b) This dataset is accurate, and has been created in accordance with that Act and those Rules. Declared on 03/05/2005.

Survey Details

Dataset Description	Lots 1-3 being subdivision of RS 41536 and PT RS 19415		
Purpose	LT Subdivision		
Status	Deposited	Type	Survey
Land District	Canterbury	Survey Class	Class II Cadastral Survey
Coordinate System	Gawler 2000		

Survey Dates

Surveyed Date	23/03/2005	Certified Date	03/05/2005
Submitted Date	03/05/2005 10:28:59	Survey Approval Date	10/05/2005
Deposit Date	23/05/2005		

Referenced Surveys

Survey Number	Land District	Bearing Correction
DP 328462	Canterbury	0°00'00"
LT 328209	Canterbury	0°00'00"
DP 304237	Canterbury	0°00'00"
DP 82933	Canterbury	0°00'00"
DP 82869	Canterbury	0°00'00"
DP 68874	Canterbury	0°00'00"
SO 18767	Canterbury	0°00'00"
SO 15645	Canterbury	0°00'00"
DP 41616	Canterbury	0°00'00"
SO 10712	Canterbury	0°00'00"
DP 24530	Canterbury	0°00'00"
SO 9092	Canterbury	0°00'00"
SO 8770	Canterbury	0°00'00"
SO 7376	Canterbury	0°00'00"
SO 6347	Canterbury	0°00'00"
SO 4487	Canterbury	0°00'00"
SO 2474	Canterbury	0°00'00"
SO 876	Canterbury	-0°00'40"



Digital Survey Plan - DP 351176

Territorial Authorities

Ashburton District

Comprised In

CT CB23F/869

CT CB375/60

Created Parcels

Parcels	Parcel Intent	Area	CT Reference
Lot 1 Deposited Plan 351176	Fee Simple Title	2.6160 ha	209906
Lot 2 Deposited Plan 351176	Fee Simple Title	2.6160 ha	209907
Lot 3 Deposited Plan 351176	Fee Simple Title	1.0165 ha	209908
Total Area		<u>6.2485 ha</u>	



Mark and Observation

Survey Number DP 351176
Coordinate System Gawler 2000

From	To	Code	Bearing	Adpt Surv	Distance	Adpt Surv
IT II DP 68874	IT I DP 82869	ob0	158°39'40"	M	91.17	M
IT I DP 82869	IT III DP 68874	ob1	158°39'40"	M	384.42	M
IT III DP 68874	IT I DP 351176	ob2	233°50'10"	M	47.59	M
IT I DP 351176	IT V DP 351176	ob3	233°50'10"	M	386.06	M
IT V DP 351176	IT IV DP 351176	ob5	233°50'10"	M	61.83	M
IT IV DP 351176	IT III DP 351176	ob7	233°50'10"	M	159.27	M
IT I DP 351176	SS SO 876	ob4	258°04'20"	M	112.21	M
SS SO 876	IS II DP 351176	ob14	258°04'20"	M	388.78	M
IS II DP 351176	SS SO 876	ob16	258°04'20"	M	84.35	M
SS SO 876	PEG 11 DP 351176	ob20	251°58'00"	M	151.39	M
IS II DP 351176	PEG 11 DP 351176	ob17	254°09'00"	M	235.43	M
IT III DP 351176	PEG 12 DP 351176	ob10	237°34'30"	M	67.67	M
IT III DP 351176	PEG 13 DP 351176	ob12	39°14'00"	M	20.76	M
IT IV DP 351176	PEG 14 DP 351176	ob8	323°14'00"	M	6.54	M
IT V DP 351176	PEG 15 DP 351176	ob6	324°57'00"	M	7.12	M
SS SO 876	IT III DP 351176	ob21	160°49'20"	M	251.27	M
SS SO 876	PEG 16 DP 351176	ob22	225°50'00"	M	30.18	M
IS II DP 351176	PEG 17 DP 351176	ob18	89°00'00"	M	84.95	M
IS II DP 351176	PEG 19 DP 351176	ob19	124°52'00"	M	22.08	M
PEG 11 DP 351176	PEG 12 DP 351176	ob24	143°14'30"	C	283.02	C
PEG 12 DP 351176	PEG 13 DP 351176	ob25	53°18'00"	C	87.62	C
PEG 13 DP 351176	PEG 14 DP 351176	ob26	53°18'00"	C	139.12	C
PEG 14 DP 351176	PEG 15 DP 351176	ob28	53°18'00"	C	62.04	C
PEG 17 DP 351176	PEG 19 DP 351176	ob32	258°04'20"	C	68.29	C
PEG 19 DP 351176	PEG 16 DP 351176	ob33	258°04'20"	C	125.00	C
PEG 16 DP 351176	PEG 11 DP 351176	ob31	258°04'20"	C	125.00	C
PEG 13 DP 351176	PEG 16 DP 351176	ob27	329°37'50"	C	232.06	C
PEG 14 DP 351176	PEG 19 DP 351176	ob29	323°17'20"	C	178.26	C
PEG 15 DP 351176	PEG 17 DP 351176	ob30	323°16'30"	C	149.64	C
SS SO 876	PEG SO 876	ob23	272°06'30"	C	16.59	C
PEG SO 876	PEG SO 876	ob34	258°04'20"	C	136.64	C
PEG SO 876	PEG SO 876	ob35	233°16'20"	C	47.98	C
IT III DP 351176	IT IV SO 10712	ob9	225°11'05"	M	498.78	M
IT III DP 351176	IT I DP 41616	ob11	185°19'10"	M	95.92	M
IT III DP 351176	SS BM U82 SO 876	ob13	64°36'05"	M	364.41	M
IT IV SO 10712	IT I DP 41616	ob37	53°24'30"	M	429.58	M
IT I DP 41616	SS BM U82 SO 876	ob38	53°19'00"	M	421.56	M
SS SO 876	PEG SO 876	ob15	63°38'20"	A DP 82933	16.14	A DP 82933
PEG SO 876	PEG SO 876	ob39	78°04'20"	A SO 876	79.66	A SO 876
PEG SO 876	PEG SO 876	ob40	233°16'20"	A SO 876	47.98	A SO 876
PEG SO 876	PEG 11 DP 351176	ob36	78°04'20"	A SO 876	45.76	C



Mark and Observation

Survey Number DP 351176

Coordinate System Gawler 2000

Mark Name	Description
IS II DP 351176	0.2 D
IT I DP 351176	FL.
IT I DP 41616	0.25 D
IT I DP 82869	FL.
IT II DP 68874	FL.
IT III DP 351176	0.2 D
IT III DP 68874	FL.
IT IV DP 351176	0.2 D
IT IV SO 10712	0.3 D
IT V DP 351176	0.2 D
SS BM U82 SO 876	CAPPED
SS SO 876	0.2 D

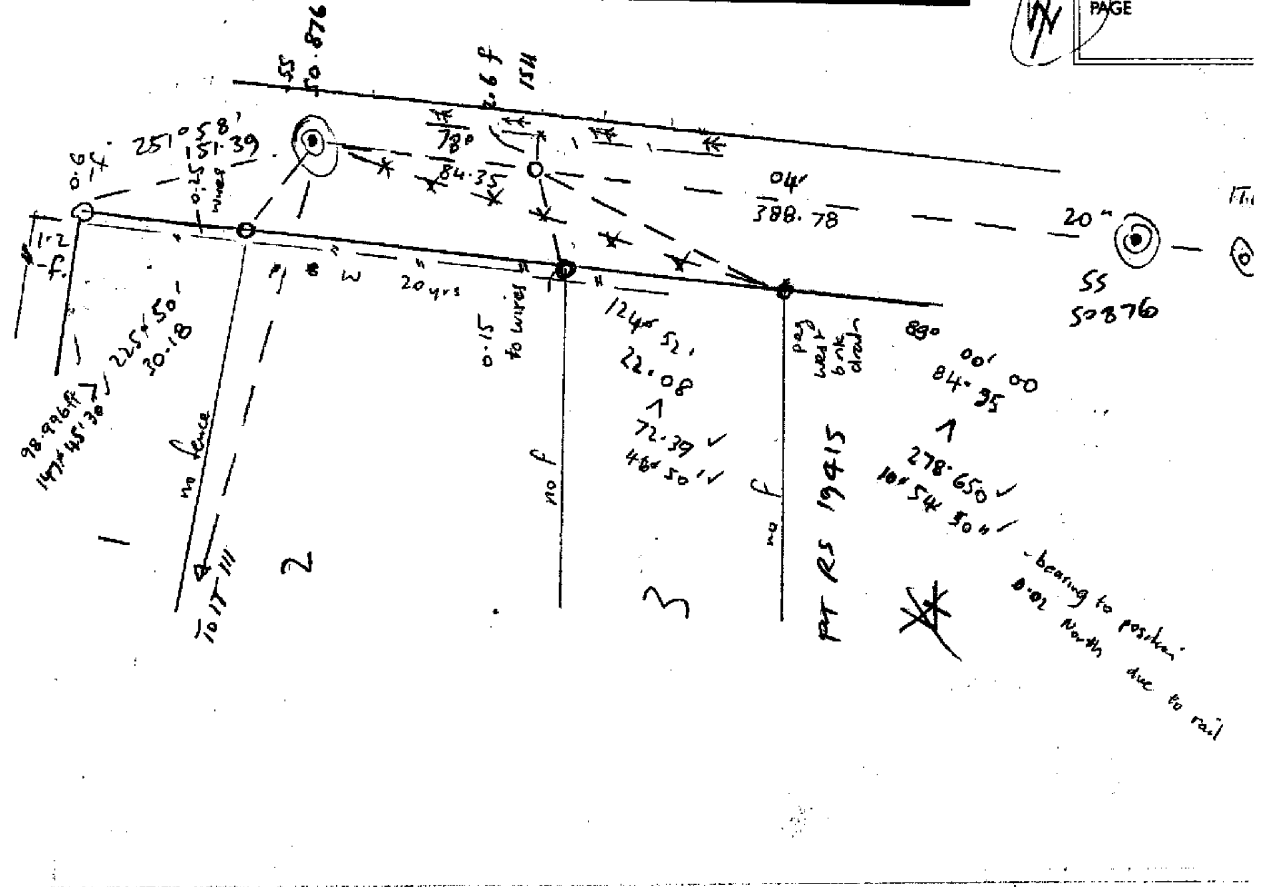
*** End of Report ***

OCCUPATION DIAGRAM

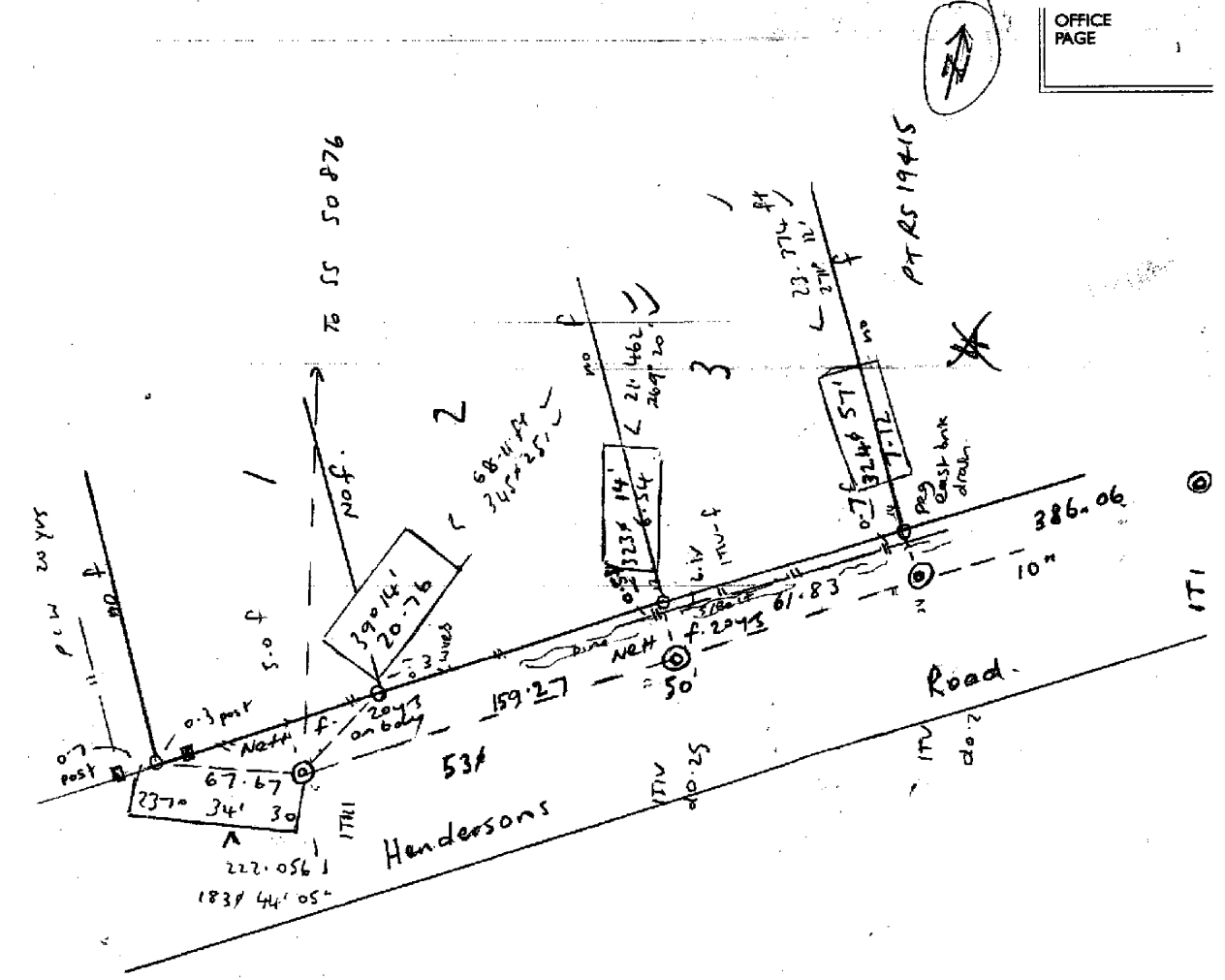
DP 351176



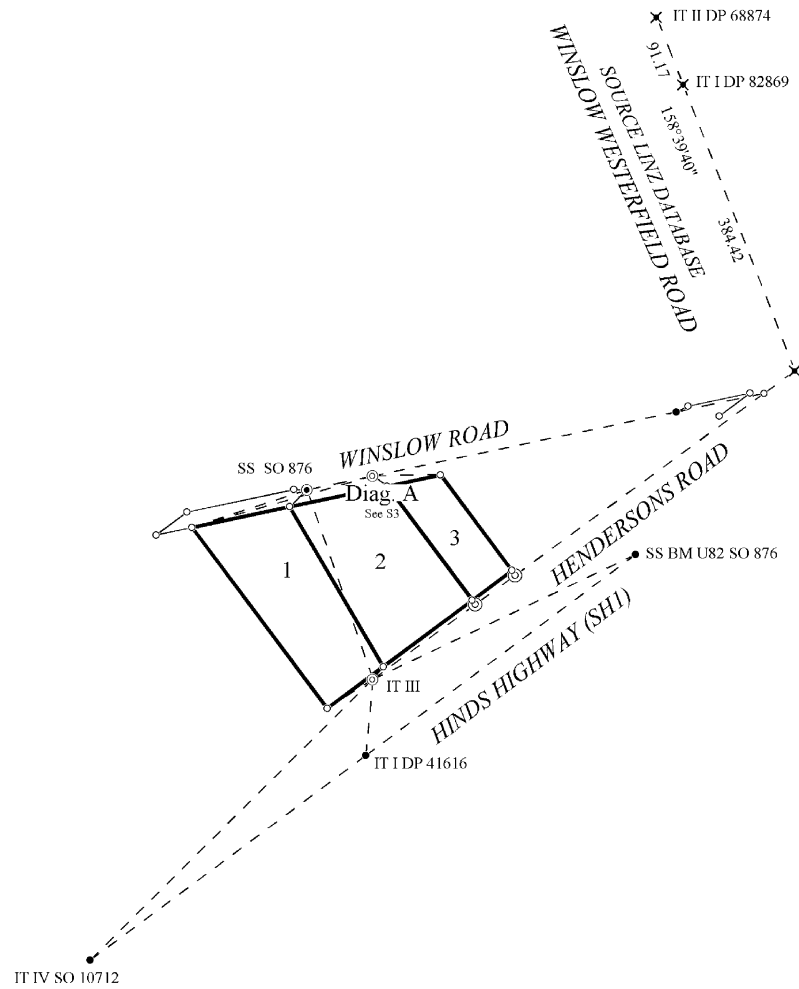
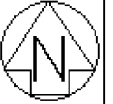
ring room	S PAGE	SURVEYOR	DATE	FB. No.	PLAN No.
	1 5	Bill / Amanda	23/03/05		



the drawing room	S PAGE	SURVEYOR	DATE	FB. No.	PLAN No.
N.24B	2 of 5	Bill / Amanda	23/03/05		

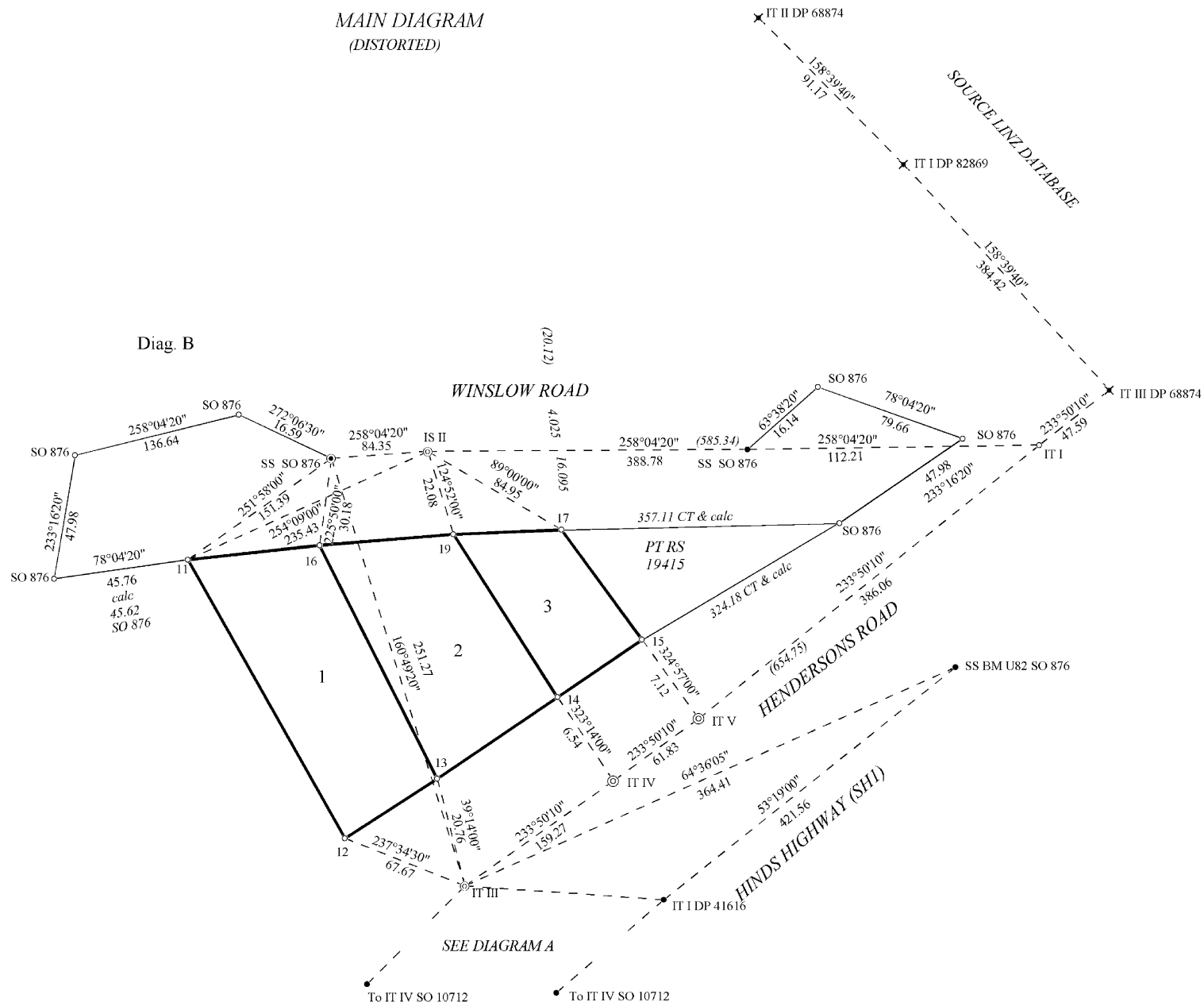


ORIGIN DIAGRAM

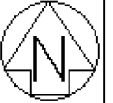




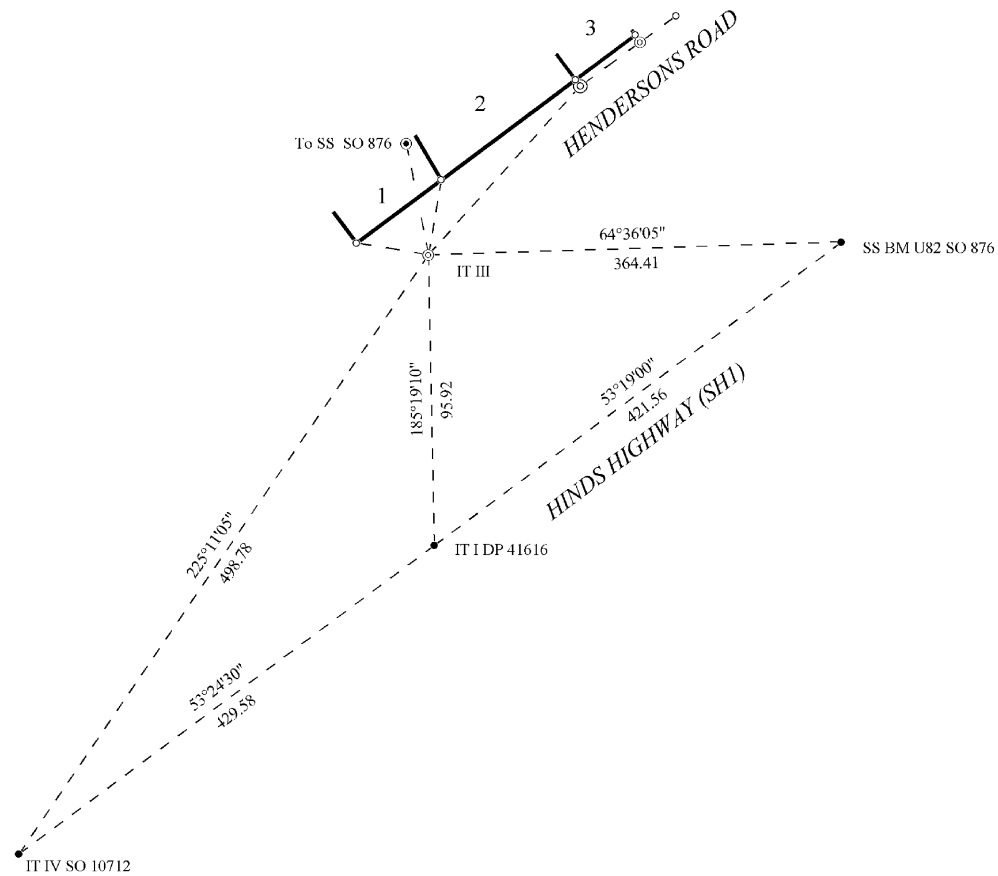
MAIN DIAGRAM
(DISTORTED)



Diag. B

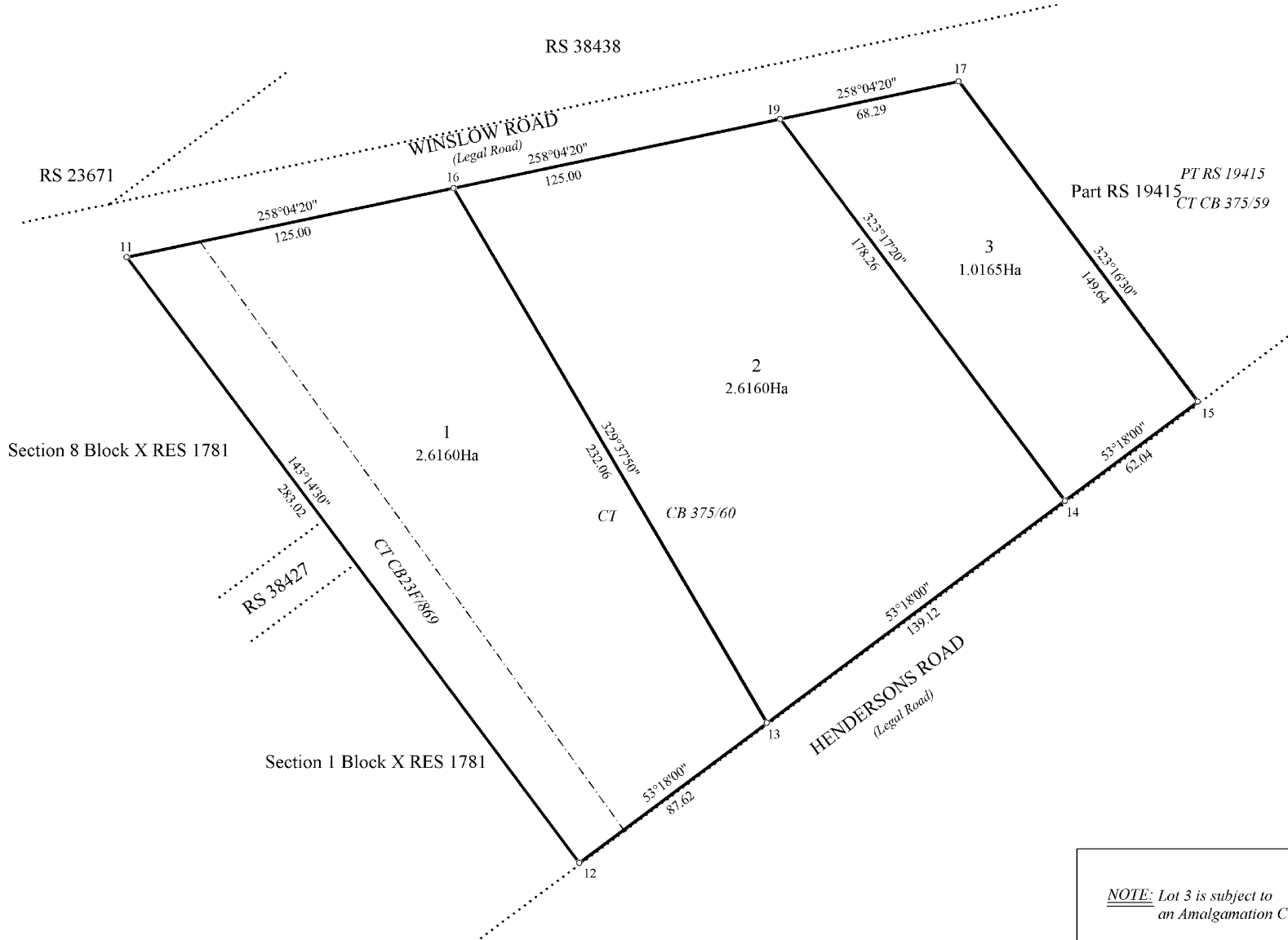


Diag. A





PRIMARY PARCEL DIAGRAM



NOTE: Lot 3 is subject to
an Amalgamation Condition

T 1/1