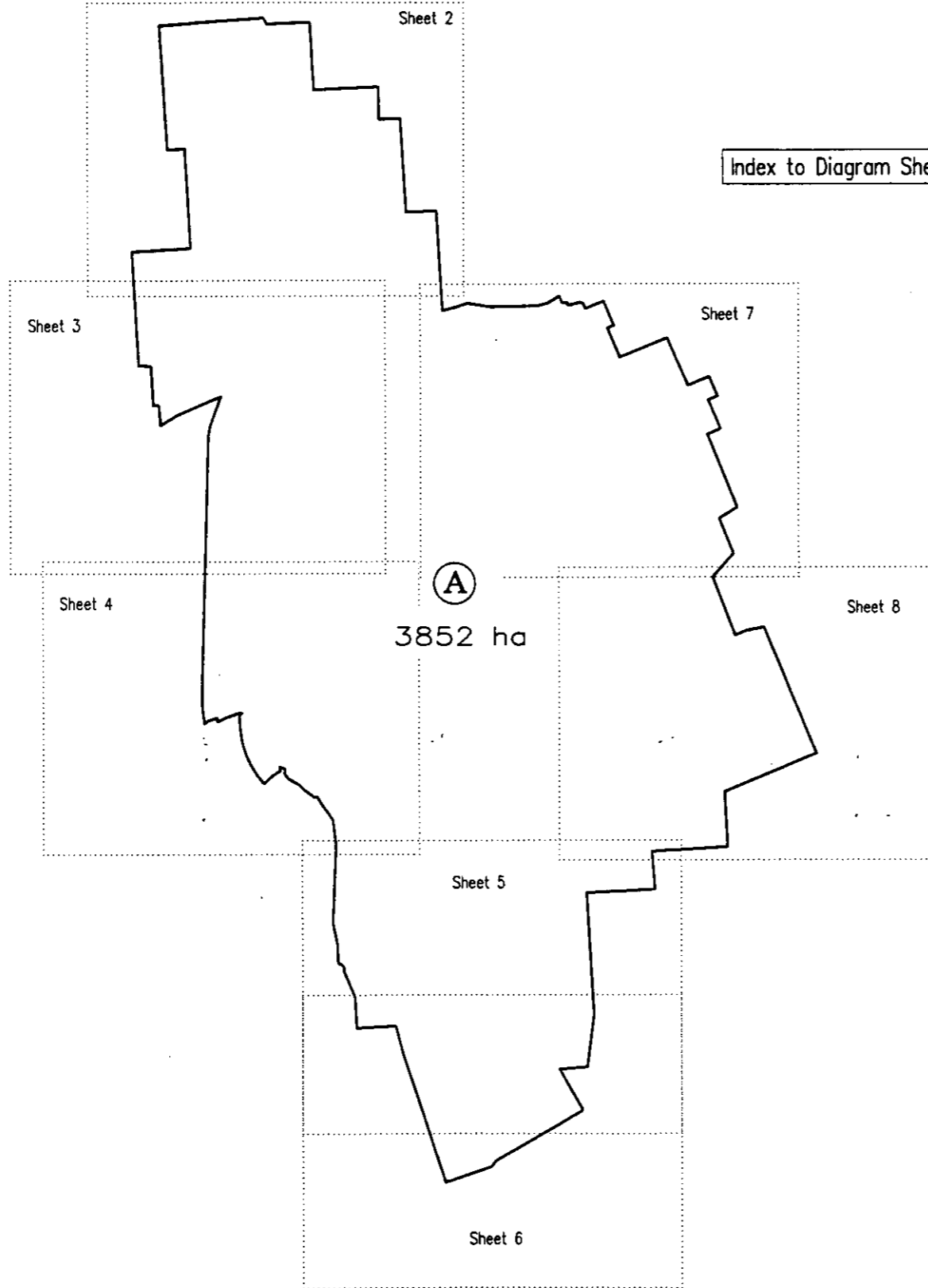


Index to Diagram Sheets



Descriptive Plan

Sheet 1 of 8

Notes

- 1. Definition not adequate for issue of title.
- 2. Airsheds comprise a strata from ground level upwards.
- 3. See diagram sheets 2 - 8 for boundary details.
- 4. Airshed boundary adopted by Southland Regional Council Resolution 22 June 2005

This plan renders the boundary capable of identification under Clause 14 of the Resource Management (National Environmental Standards Relating to Certain Air Pollutants, Dioxins, and Other Toxics) Regulations 2004.

Approved by Land Information New Zealand

Signature 15/7/2005

File 2134 T1

SO 355700

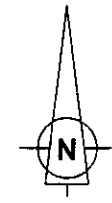
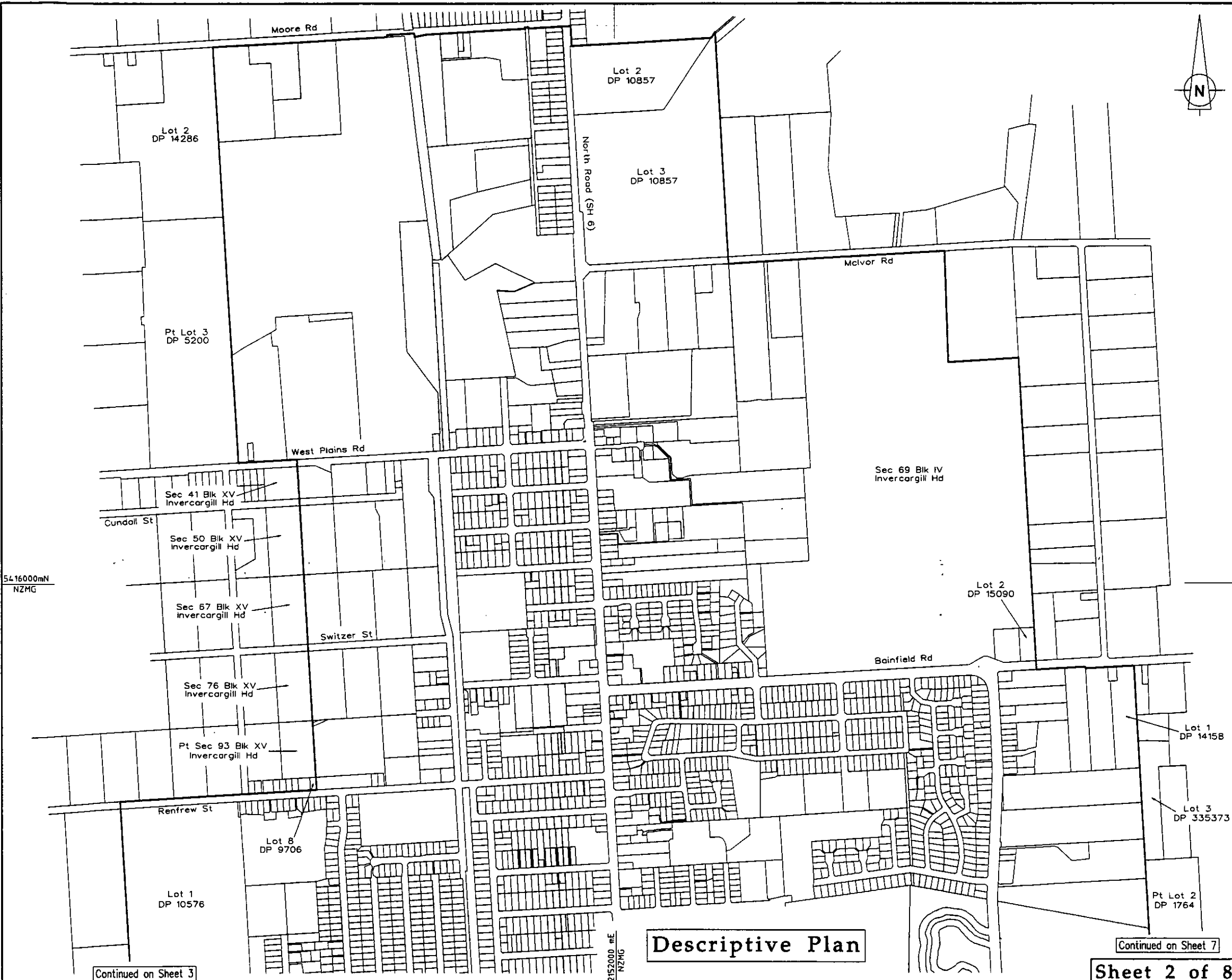
5410000mN
NZMG

2150000mE
NZMG

LAND DISTRICT: Southland

Airshed Boundaries
Invercargill

TERRITORIAL AUTHORITY Invercargill City Council
Prepared by TrueSouth Survey Services Limited
Scale 1 : 40000 Date June 2005



- Notes
1. Definition not adequate for issue of title.
 2. Airsheds comprise a strata from ground level upwards.
 3. Airshed boundary adopted by Southland Regional Council Resolution 22 June 2005.

This plan renders the boundary capable of identification under Clause 14 of the Resource Management (National Environmental Standards Relating to Certain Air Pollutants, Dioxins, and Other Toxics) Regulations 2004.

Approved by Land Information New Zealand
Legal 15/7/2005

File 2134 T2
SO 355700

LAND DISTRICT: Southland

Airshed Boundaries Invercargill

TERRITORIAL AUTHORITY Invercargill City Council
 Prepared by TrueSouth Survey Services Limited
 Scale 1:8000 Date June 2005

Continued on Sheet 7
Sheet 2 of 8

Continued on Sheet 2

Lot 1
DP 10576

Lot 1
DP 11967

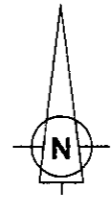
Lot 2
DP 11967

Bay Rd

Lot 8
DP 8313

Pt Sec 7 Sec 19
Blk XXI
Invercargill Hd

Pt Sec 14 Sec 19
Blk XXI
Invercargill Hd



5414.000mN
NZMG

Descriptive Plan

2151000mE
NZMG

Continued on Sheet 4

Sheet 3 of 8

Notes

- 1. Definition not adequate for issue of title.
- 2. Airsheds comprise a strata from ground level upwards.
- 3. Airshed boundary adopted by Southland Regional Council Resolution 22 June 2005.

This plan renders the boundary capable of identification under Clause 14 of the Resource Management (National Environmental Standards Relating to Certain Air Pollutants, Dioxins, and Other Toxics) Regulations 2004.

Approved by Land Information New Zealand

Signature 15/7/2005

File 2134 T3

SO 355700

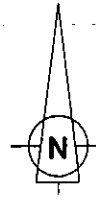
LAND DISTRICT: Southland

**Airshed Boundaries
Invercargill**

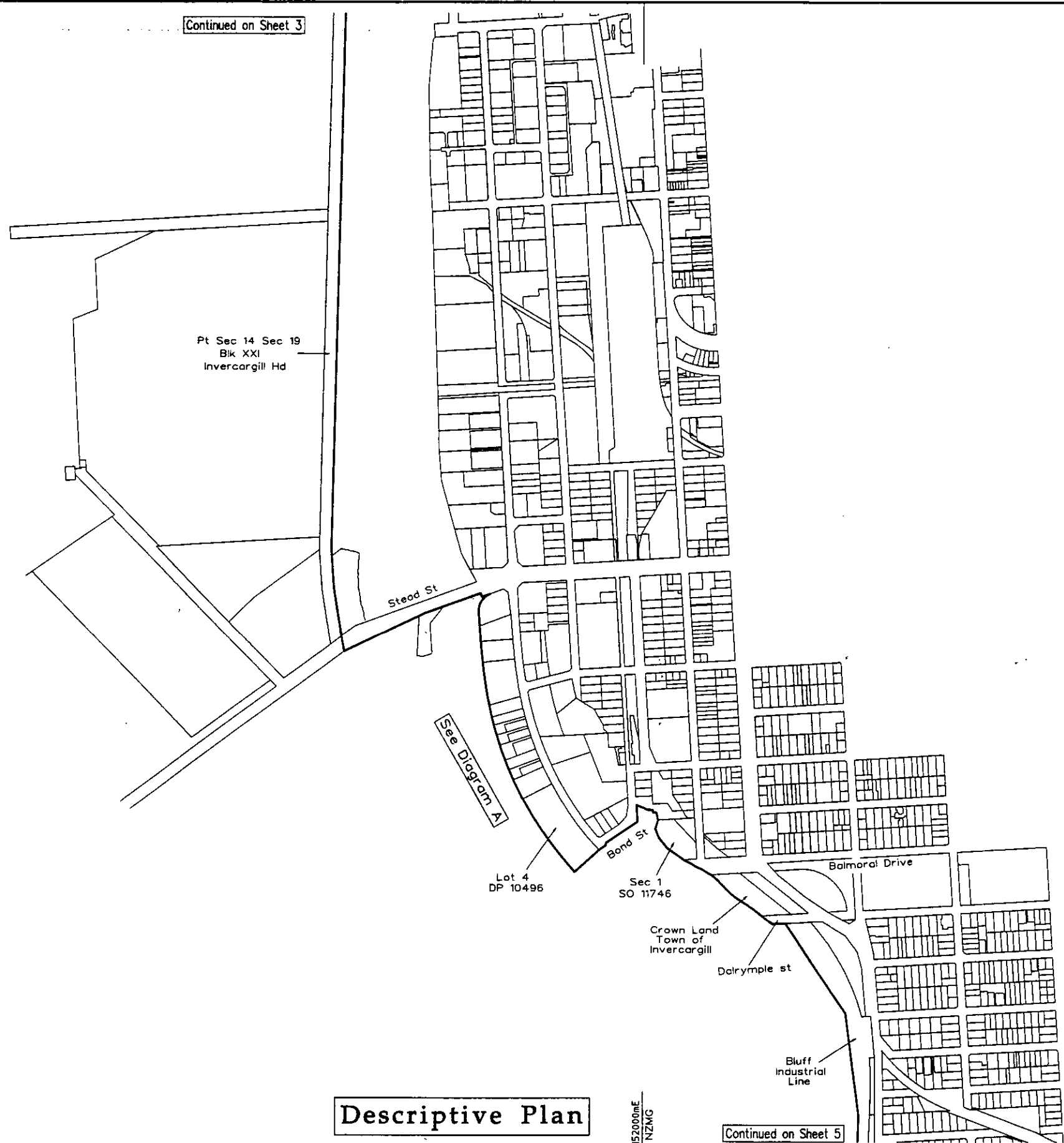
TERRITORIAL AUTHORITY Invercargill City Council
Prepared by TrueSouth Survey Services Limited
Scale 1 : 8000 Date June 2005

Continued on Sheet 3

5412000mN
NZMG



Pt Sec 14 Sec 19
Blk XXI
Invercargill Hd



See Diagram A

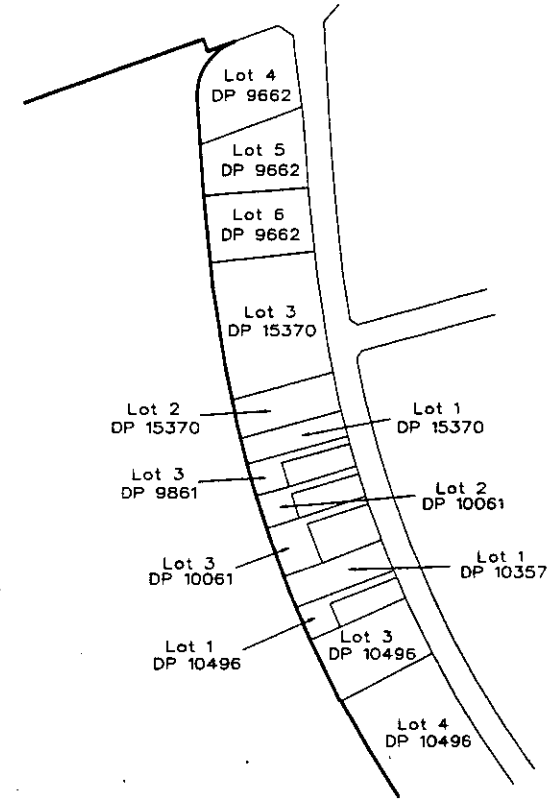


Diagram A
Scale 1:4000

5410000mN
NZMG

Descriptive Plan

2152000mE
NZMG

Continued on Sheet 5

Sheet 4 of 8

- Notes
1. Definition not adequate for issue of title.
 2. Airsheds comprise a strata from ground level upwards.
 3. Airshed boundary adopted by Southland Regional Council Resolution 22 June 2005.

This plan renders the boundary capable of identification under Clause 14 of the Resource Management (National Environmental Standards Relating to Certain Air Pollutants, Dioxins, and Other Toxics) Regulations 2004.

Approved by Land Information New Zealand
Regatta 15/7/2005

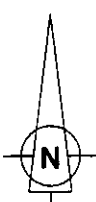
File 2134 T4

SO 355700

LAND DISTRICT: Southland

**Airshed Boundaries
Invercargill**

TERRITORIAL AUTHORITY Invercargill City Council
Prepared by TrueSouth Survey Services Limited
Scale 1:8000 Date June 2005



Descriptive Plan

Sheet 5 of 8

Notes

1. Definition not adequate for issue of title.
2. Airsheds comprise a strata from ground level upwards.
3. Airshed boundary adopted by Southland Regional Council Resolution 22 June 2005.

This plan renders the boundary capable of identification under Clause 14 of the Resource Management (National Environmental Standards Relating to Certain Air Pollutants, Dioxins, and Other Toxics) Regulations 2004.

Approved by Land Information New Zealand
Shegalla 15/7/2005

LAND DISTRICT: Southland

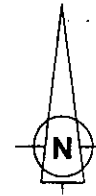
**Airshed Boundaries
 Invercargill**

TERRITORIAL AUTHORITY Invercargill City Council
 Prepared by TrueSouth Survey Services Limited
 Scale 1 : 8000 Date June 2005

File 2134 T5

SO 355700

Continued on Sheet 5



Pt Sec 9
Blk III
Invercargill Hd



Sec 21 Blk XIX
Invercargill Hd

Avon Rd

Pt Sec 12 Blk IV
Town of Seaward Bush

Bain St

Chesney St

Bluff Industrial Line

5407000mN
NZMG

2154000mE
NZMG

Descriptive Plan

Sheet 6 of 8

LAND DISTRICT: Southland

Airshed Boundaries Invercargill

TERRITORIAL AUTHORITY Invercargill City Council
Prepared by TrueSouth Survey Services Limited
Scale 1 : 8000 Date June 2005

Notes

1. Definition not adequate for issue of title.
2. Airsheds comprise a strata from ground level upwards.
3. Airshed boundary adopted by Southland Regional Council Resolution 22 June 2005.

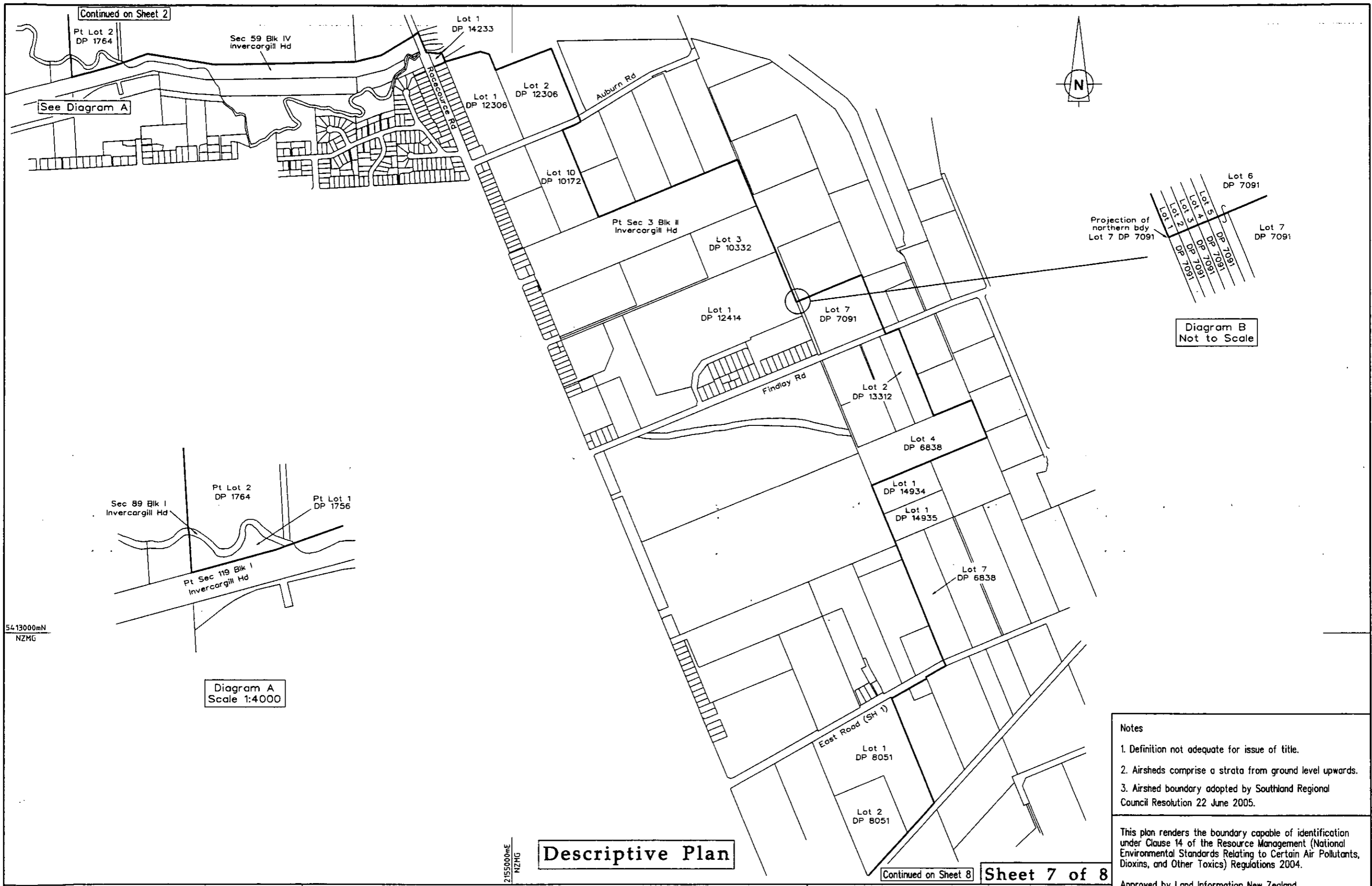
This plan renders the boundary capable of identification under Clause 14 of the Resource Management (National Environmental Standards Relating to Certain Air Pollutants, Dioxins, and Other Toxics) Regulations 2004.

Approved by Land Information New Zealand

Segall 15/7/2005

File 2134 T6

SO 355700



Descriptive Plan

- Notes
1. Definition not adequate for issue of title.
 2. Airsheds comprise a strata from ground level upwards.
 3. Airshed boundary adopted by Southland Regional Council Resolution 22 June 2005.

This plan renders the boundary capable of identification under Clause 14 of the Resource Management (National Environmental Standards Relating to Certain Air Pollutants, Dioxins, and Other Toxics) Regulations 2004.

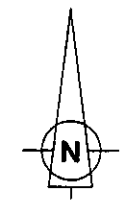
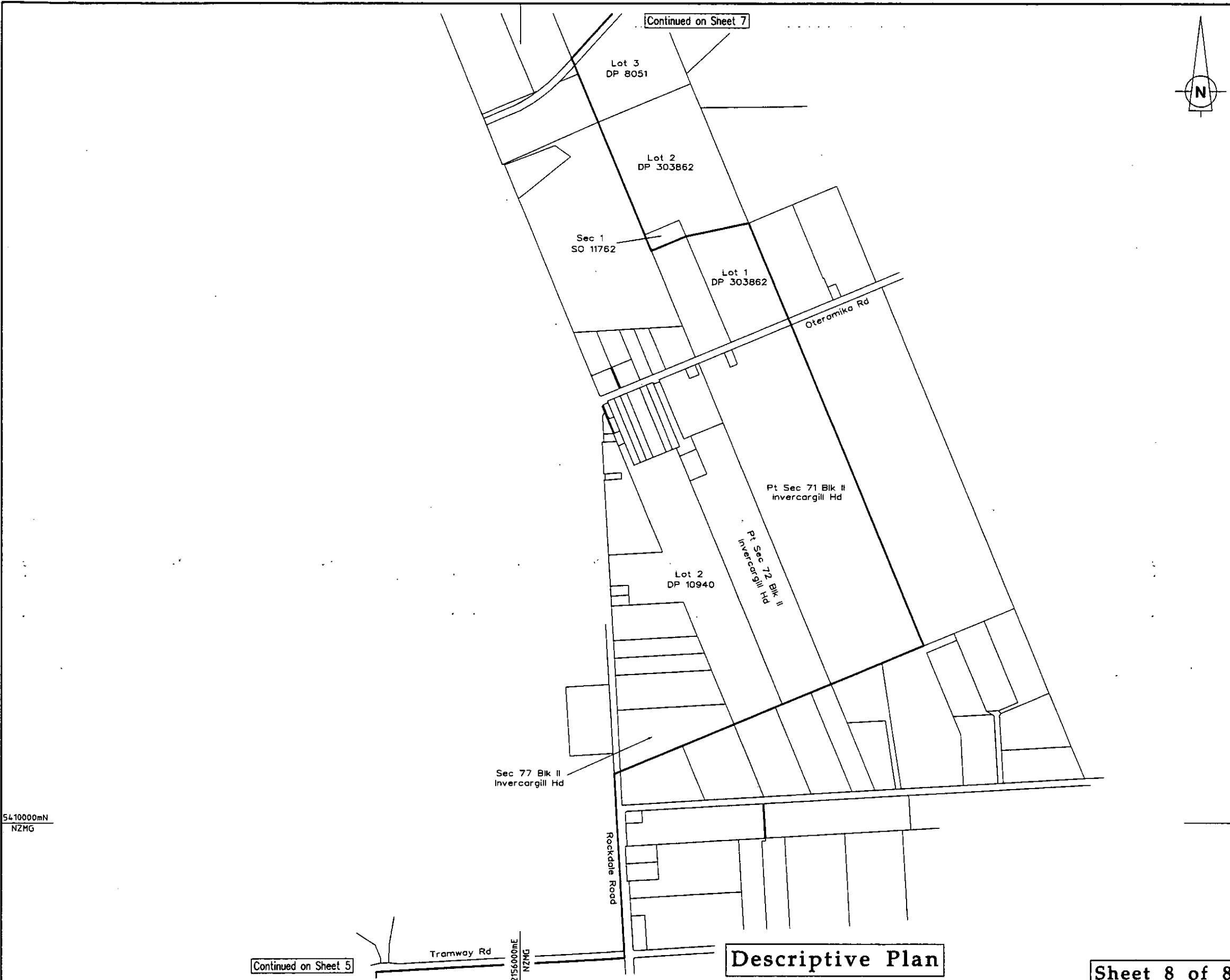
Approved by Land Information New Zealand
Slepylo 15/7/2005

File 2134 T7 **SO 355700**

LAND DISTRICT: Southland

**Airshed Boundaries
 Invercargill**

TERRITORIAL AUTHORITY Invercargill City Council
 Prepared by TrueSouth Survey Services Limited
 Scale 1:8000 Date June 2005



- Notes
1. Definition not adequate for issue of title.
 2. Airsheds comprise a strata from ground level upwards.
 3. Airshed boundary adopted by Southland Regional Council Resolution 22 June 2005.

This plan renders the boundary capable of identification under Clause 14 of the Resource Management (National Environmental Standards Relating to Certain Air Pollutants, Dioxins, and Other Toxics) Regulations 2004.

Approved by Land Information New Zealand
Stegath 15/7/2005

File 2134 T8

SO 355700

LAND DISTRICT: Southland

**Airshed Boundaries
 Invercargill**

TERRITORIAL AUTHORITY Invercargill City Council
 Prepared by TrueSouth Survey Services Limited
 Scale 1: 8000 Date June 2005