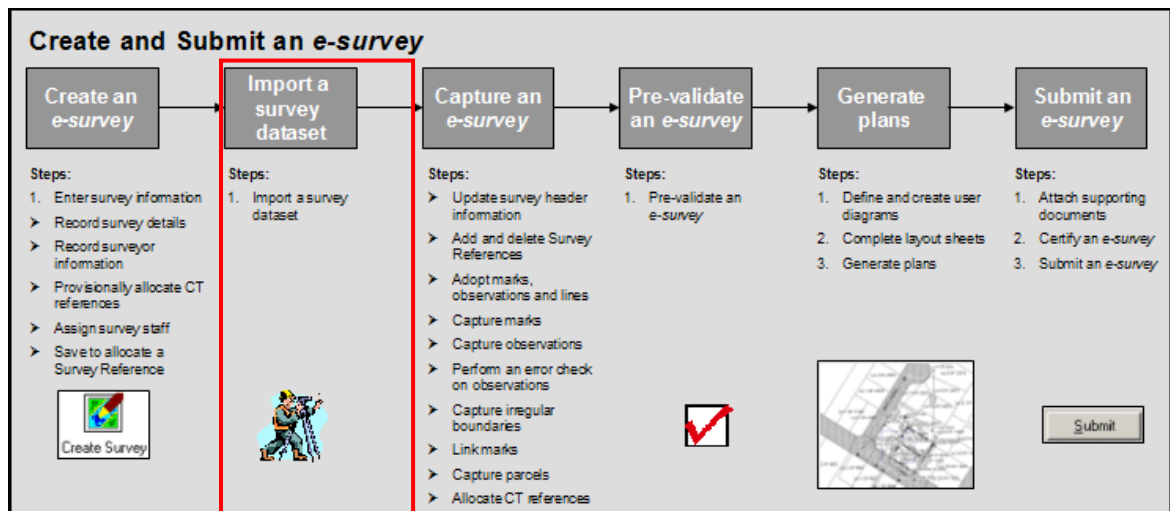


6 IMPORT A SURVEY DATASET

6.1 Overview



You can import survey information from survey software packages into Landonline. This information must be in a XML file and must comply with the LandXML schema.

LandXML is based on the XML (Extensible Markup Language) specifications. XML is an open format used to transfer information between survey and engineering applications.

Before importing your XML file into Landonline from a survey software package you must:

- Create the *e-survey* in Landonline.
- Complete fields in the Survey Information tab of the Manage Survey Transaction screen. See chapter 5 **Create an e-survey**.

Information held in Landonline for your *e-survey* is overwritten when you import new data. If you add imported data to your existing *e-survey* you will lose information already captured.

Landonline does not support the import of partial files. You should only import an XML file of a complete survey.

While importing an XML file Landonline displays details of the file in the Import Progress field allowing you to track its progress. Fields in all appropriate Landonline screens are populated automatically without the need to open each screen.

Once completed, Landonline stores the file in the Survey Capture staging area and links it to the *e-survey*. You should then pre-validate the *e-survey* as this helps you to identify data that could not be imported from your survey software package.

The imported XML file overwrites some fields in the Survey Information tab of the Manage Survey Transaction screen if the information was included in the XML file. These fields are:

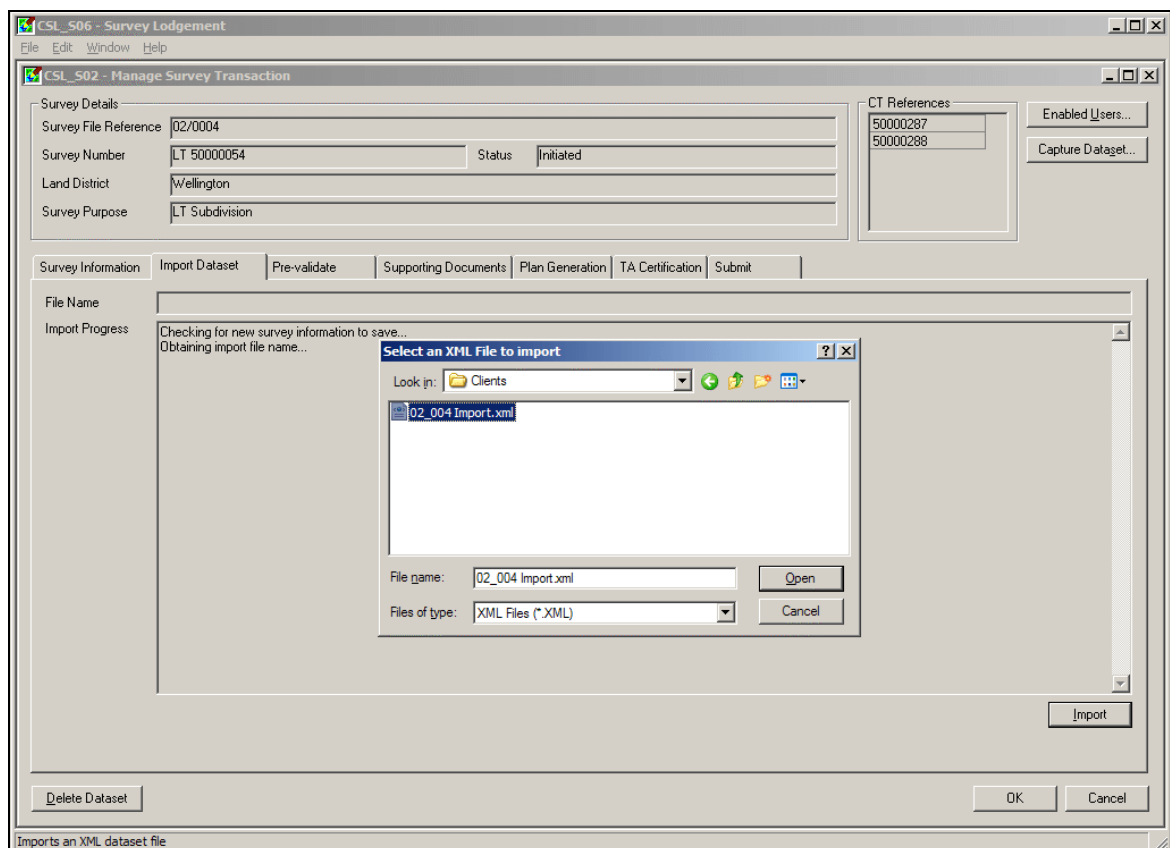
- Survey File Reference
- Accreditation Status
- Survey Description

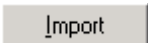
Before you start to prepare survey plans you will need to perform some edits to data. The amount of editing required is:

- determined by the survey software used to create the XML file
- dependent on the survey purpose and the mapping applicable to the survey
- dependent on the pre-validation report failures.

For more information about importing an XML file into Landonline, refer to the Landonline website (www.landonline.govt.nz).

6.2 Import a XML file into your e-survey



1. Display the Manage Survey transaction screen. See topic **5.2.1 Display the Manage Survey Transaction screen**.
2. Select the Import Dataset tab.
3. Click 

Landonline – e-survey User Guide

4. Enter or select the path and file name to import.
5. Click Details of the file display in the Import Progress field as it is imported.
 - When completed, a message displays to advise the estimated time to pre-validate the *e-survey*.
6. Click to perform the pre-validation. This will identify any data which could not be imported from your survey software package. See chapter **8 Pre-validate an e-survey**.

Caution: Information held in Landonline for your *e-survey* is overwritten when you import new data. If you add imported data to your existing *e-survey* you will lose information already captured.

Note:

- Importing a file does not affect any attached supporting document or the survey or title plan images.
- The time it takes to import a file depends on the size of the file and your Internet connection speed.
- Refer to the Landonline website (www.landonline.govt.nz) for additional information about importing a XML file into Landonline.